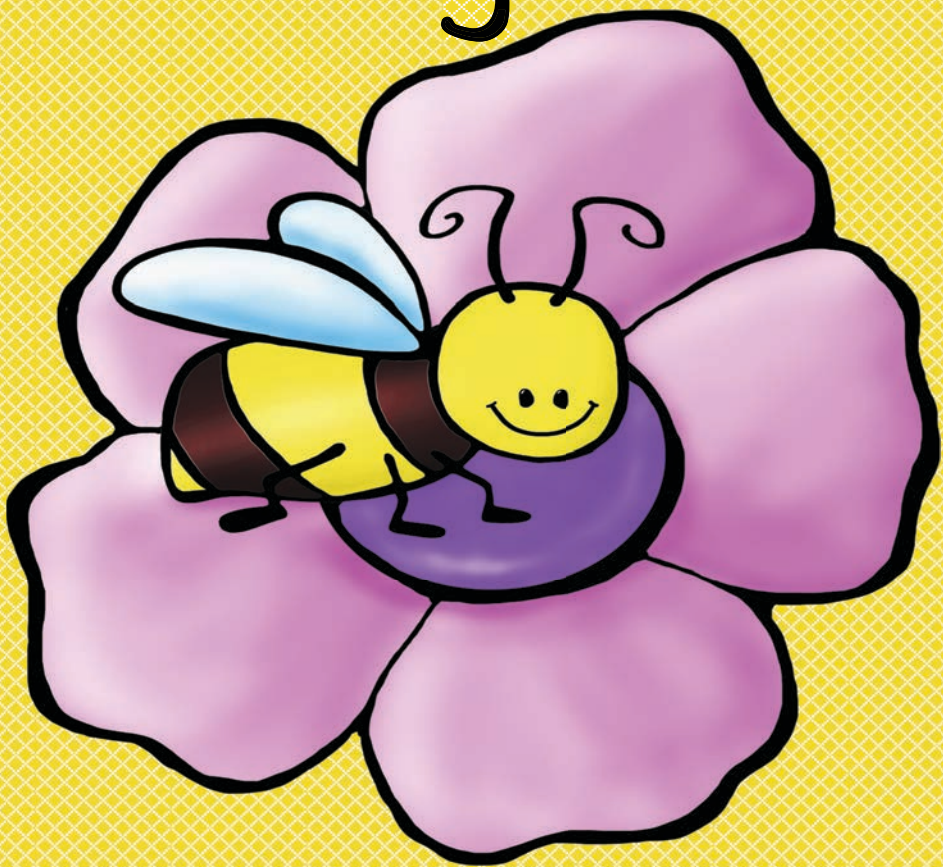


Bee Life Cycle Notebooking Pages



© 2018 Stacey Jones at Simple Living, Creative Learning

[PINTEREST](#)

[WEBSITE](#)

[FACEBOOK](#)

All rights reserved. No part of this book may be reproduced, stored or transmitted in any form by any means without prior permission of the publisher.

This workbook is licensed for personal/family use only.

YOU MAY:

- Use these files for personal use only.
 - Use in your personal classroom
- Download the files to your personal computer.
- Print as many copies as you would like to use for your personal use.
- Direct other to our website: <https://simplelivingcreativelearning.com>

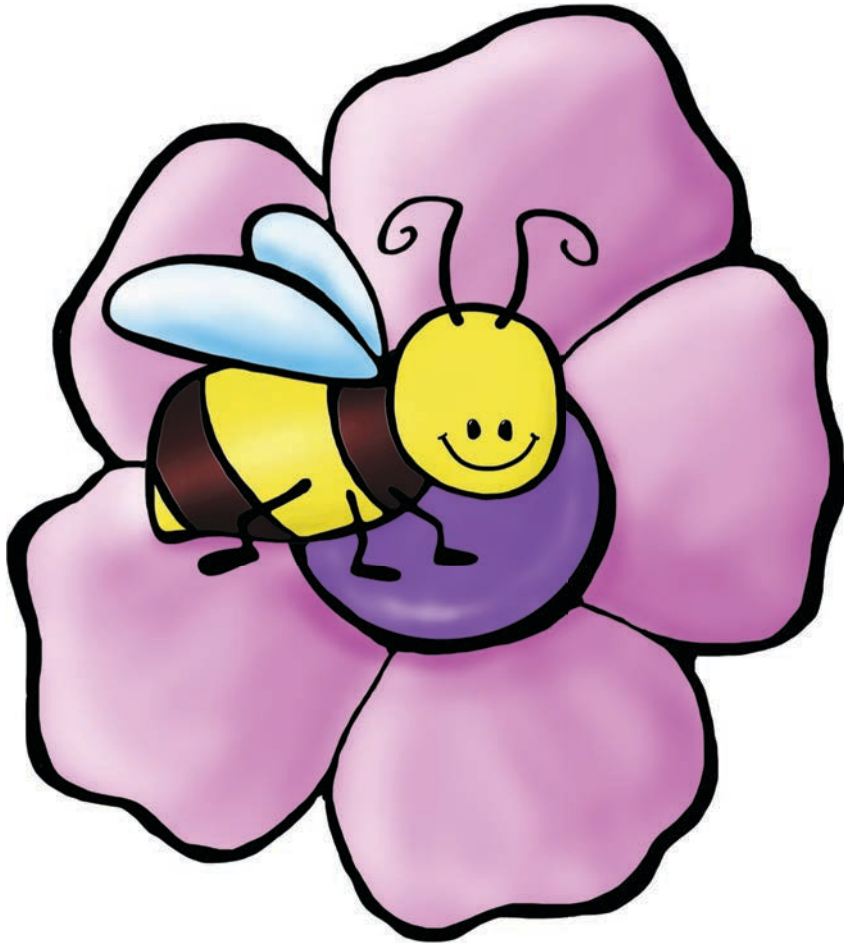
YOU MAY NOT:

- Edit any of these printables.
- Share the files with anyone else.
- Store or sell them on any website.
 - Claim them as your own.
- Print and sell or distribute them to others

Graphics and Fonts:

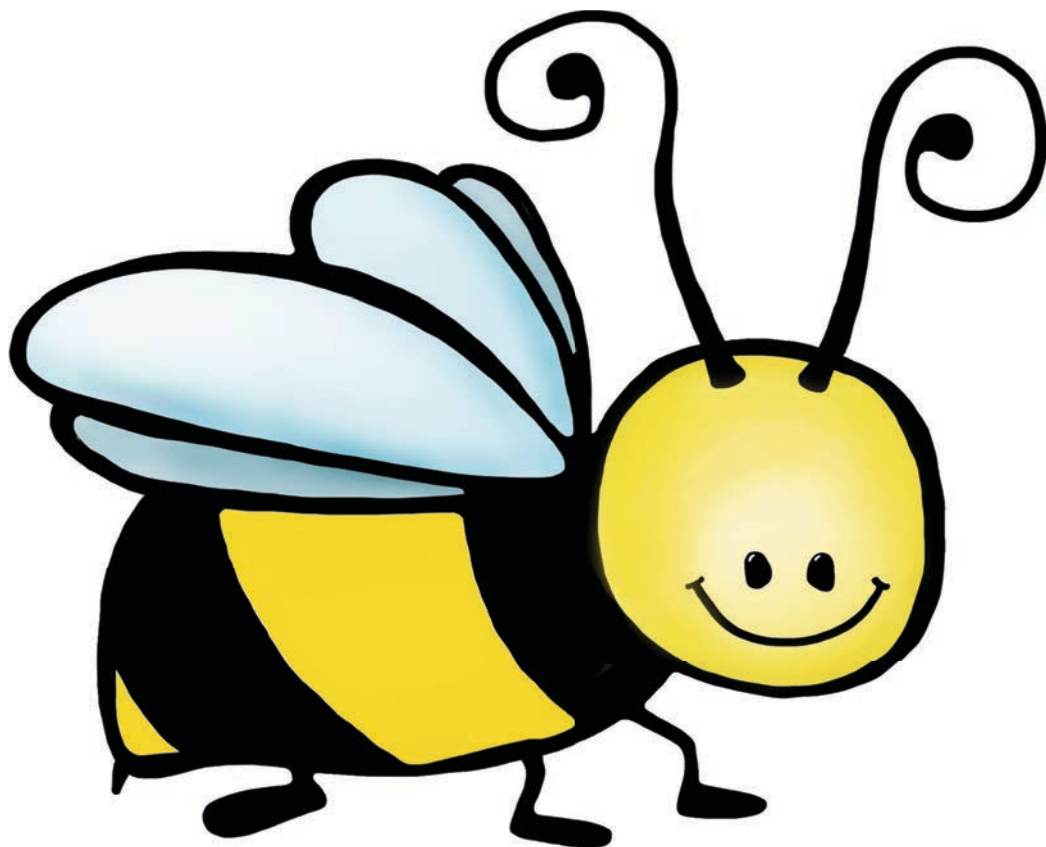
[Whimsy Clips](#)

Bees



by _____

Bees



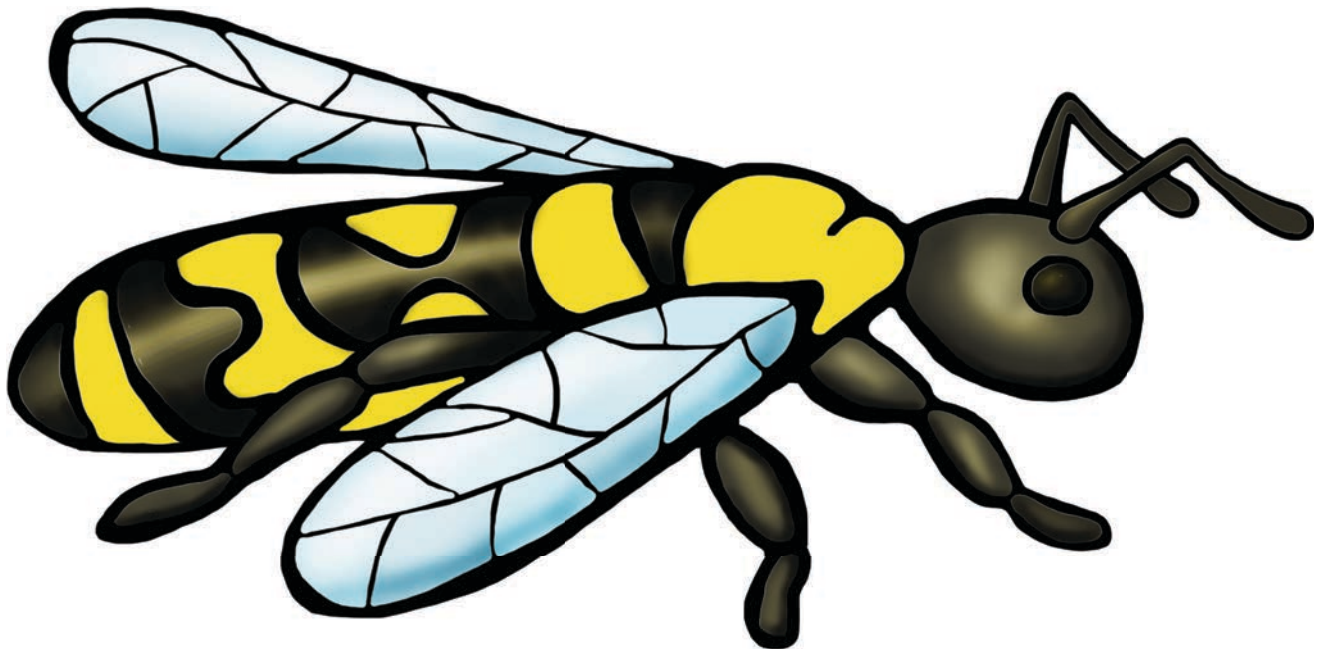
by _____

Bees



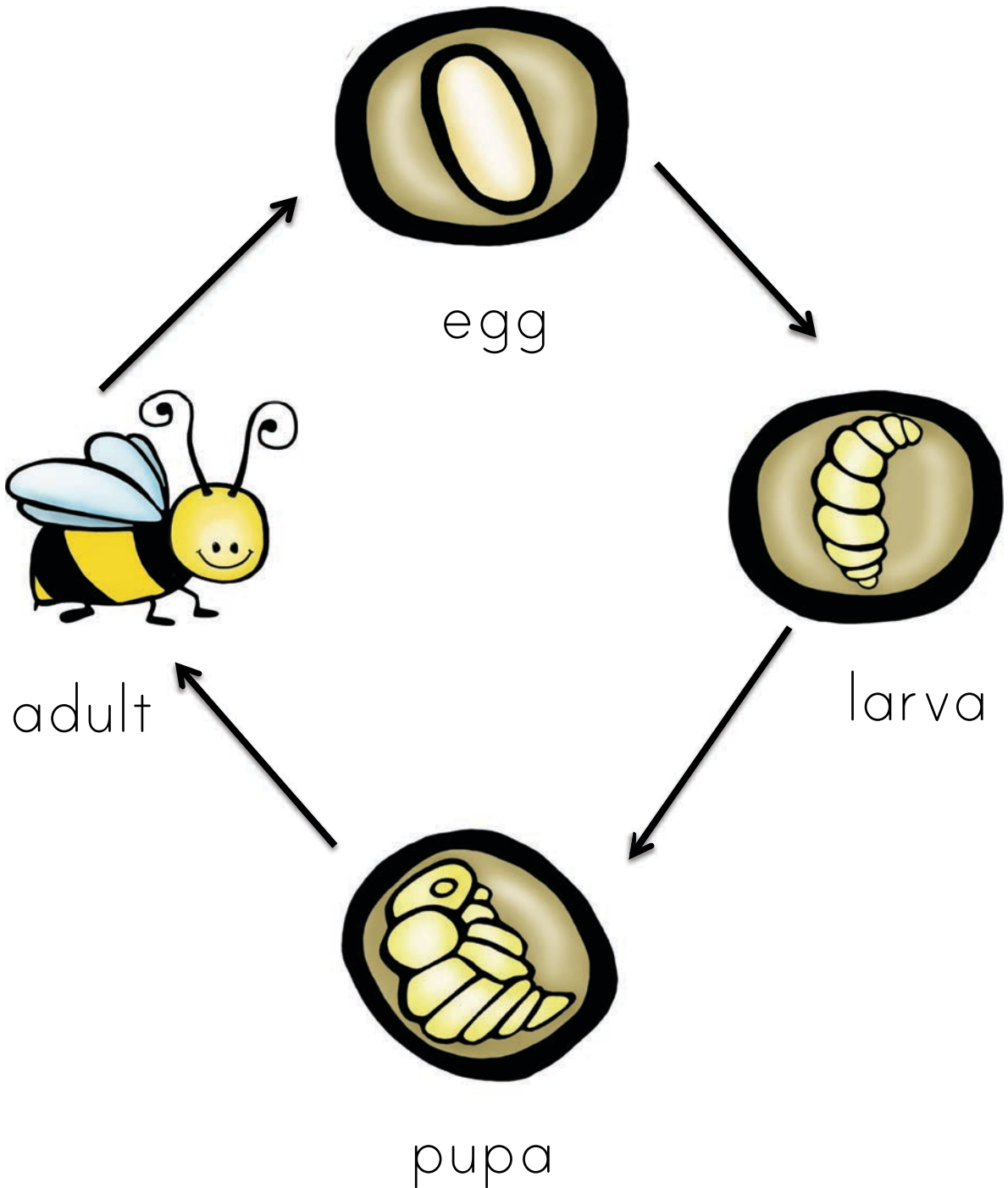
by _____

Bees

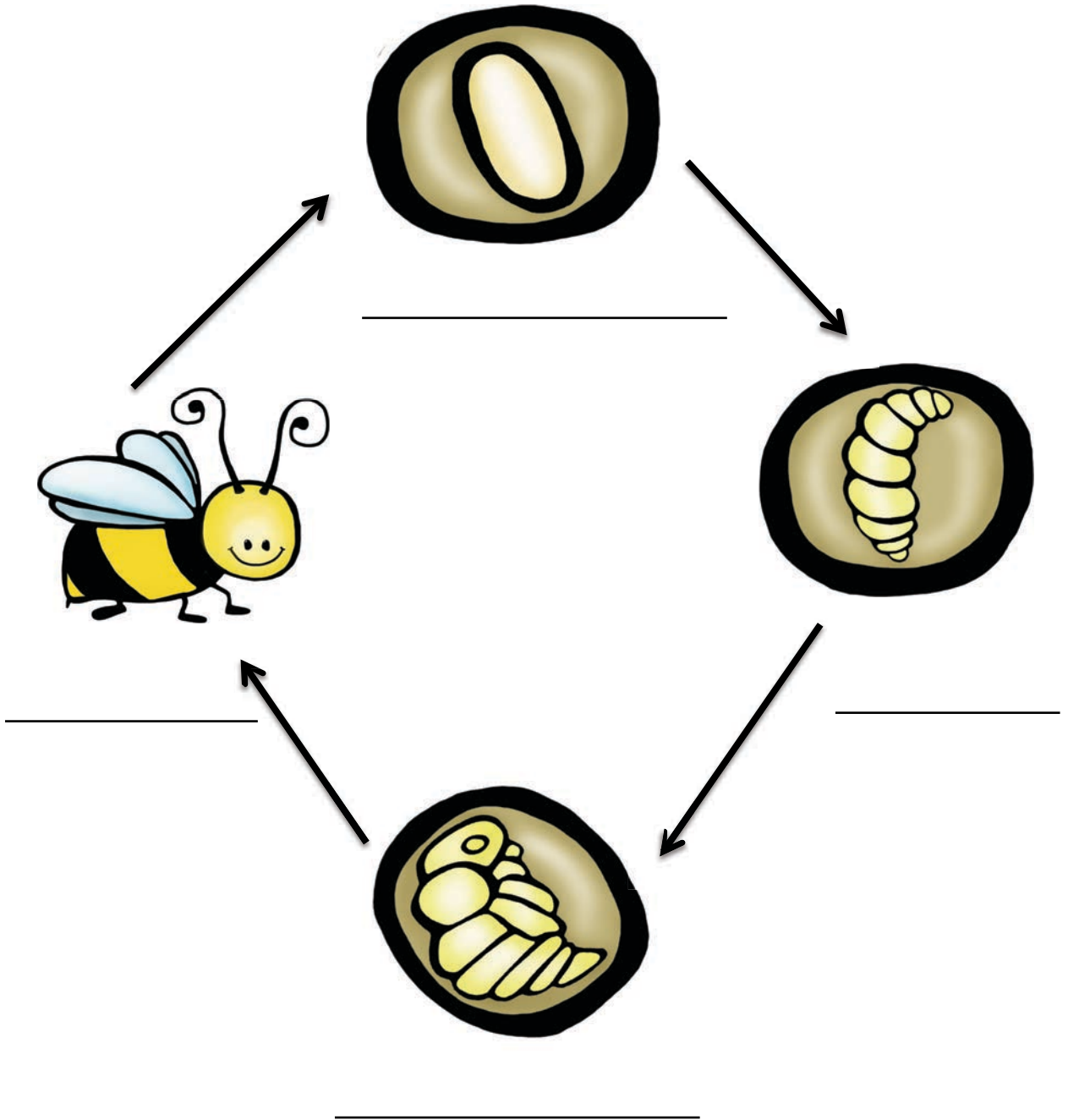


by _____

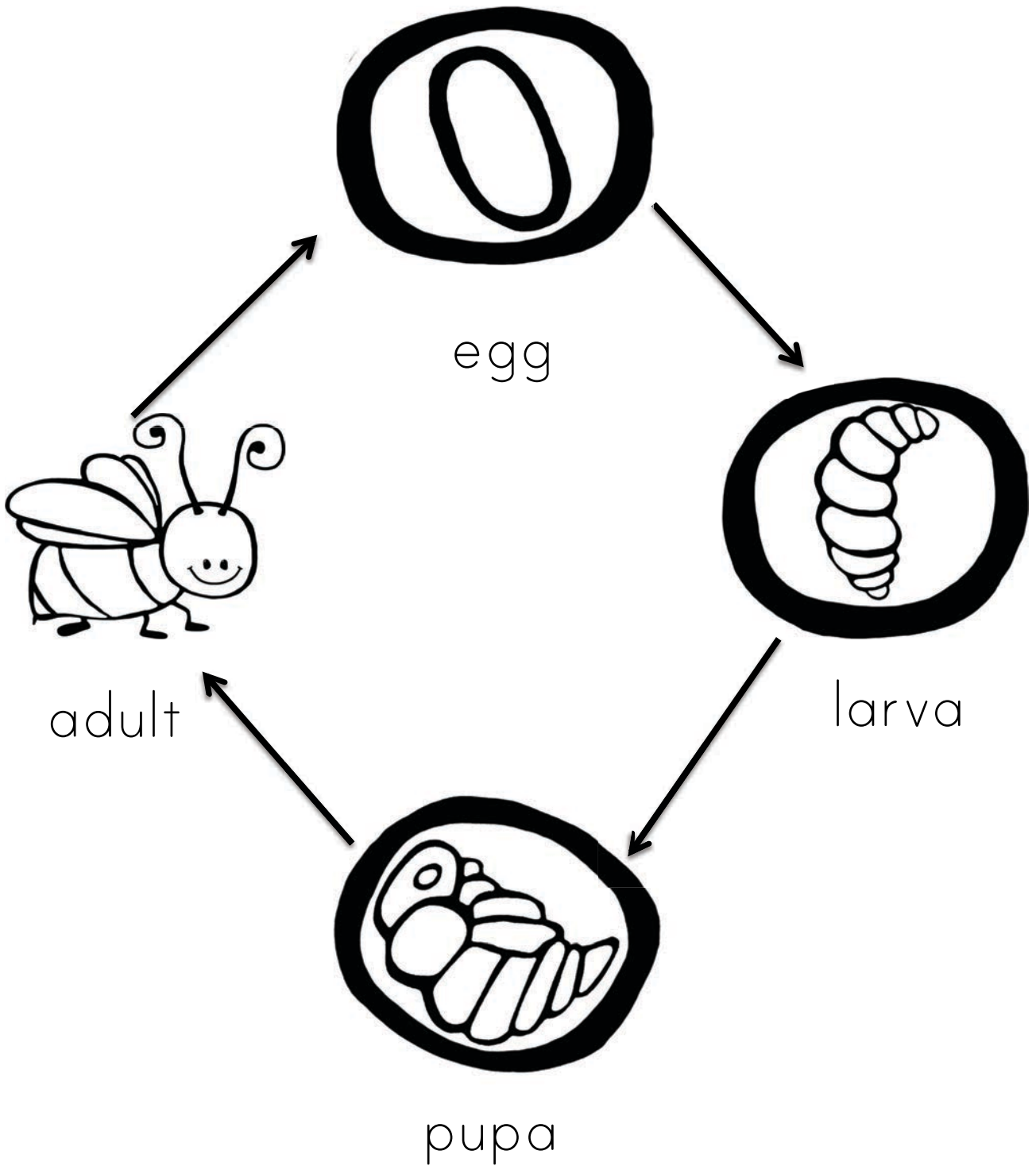
Bee Life Cycle



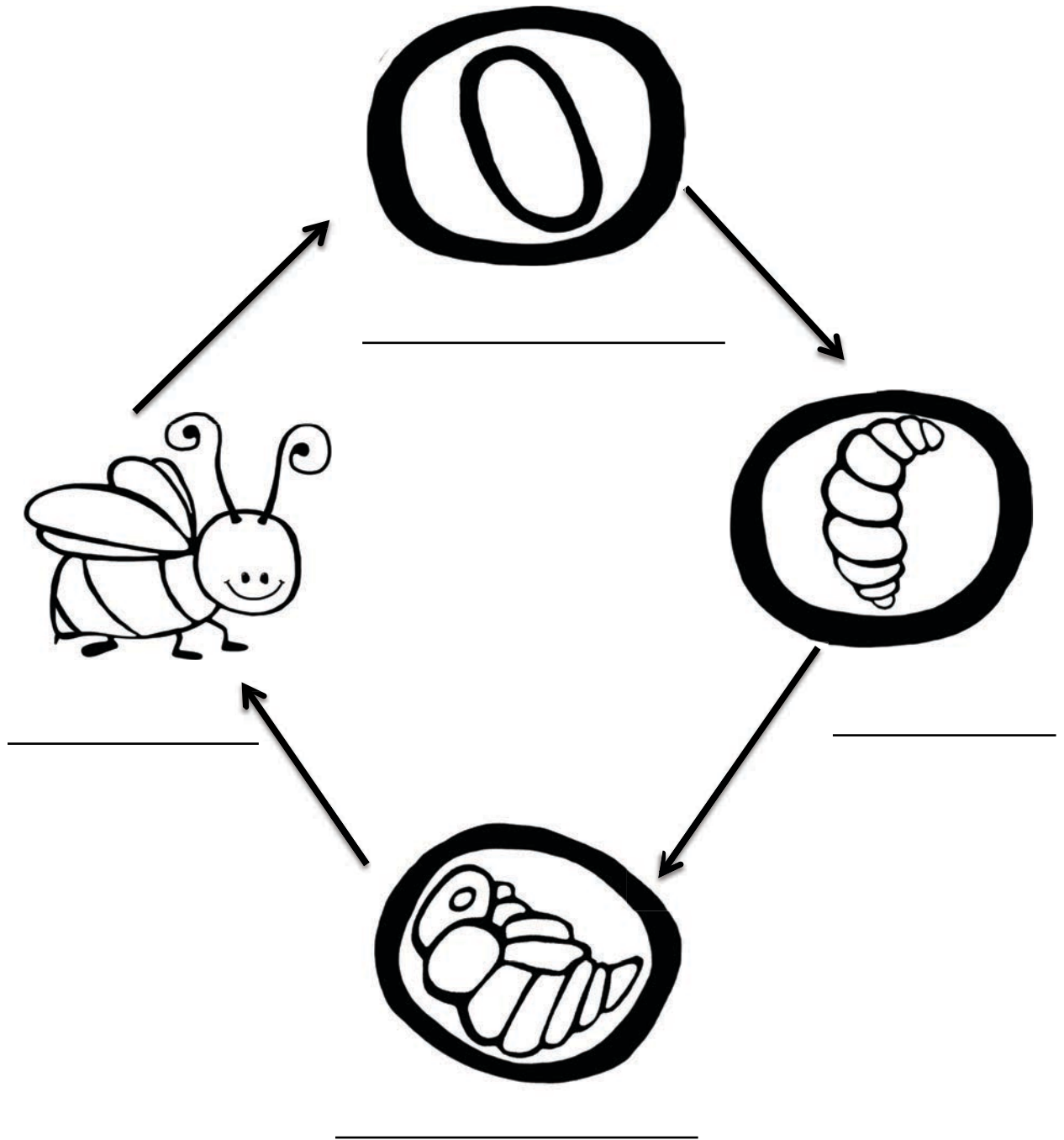
Bee Life Cycle



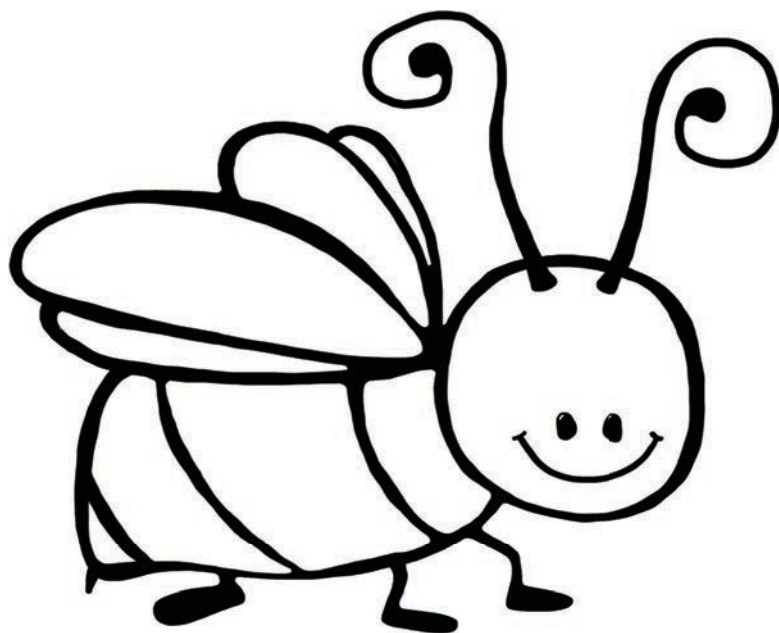
Bee Life Cycle



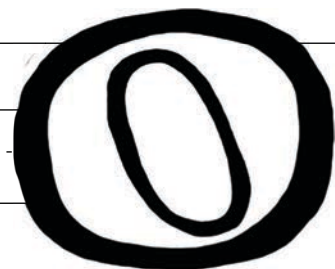
Bee Life Cycle

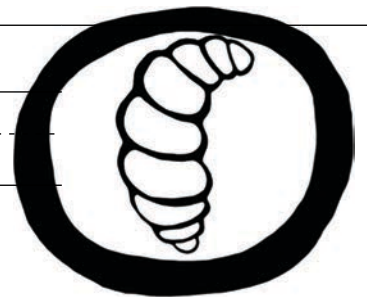


My Bee Life Cycle Book

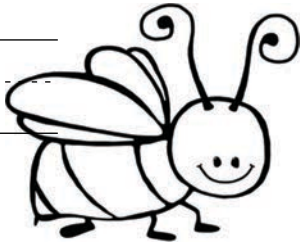


Handwriting practice lines consisting of solid top and bottom lines with a dashed middle line. A large number '0' is positioned at the bottom right of the page, spanning across the final set of lines.





Handwriting practice lines consisting of multiple sets of solid top and bottom lines with a dashed midline.



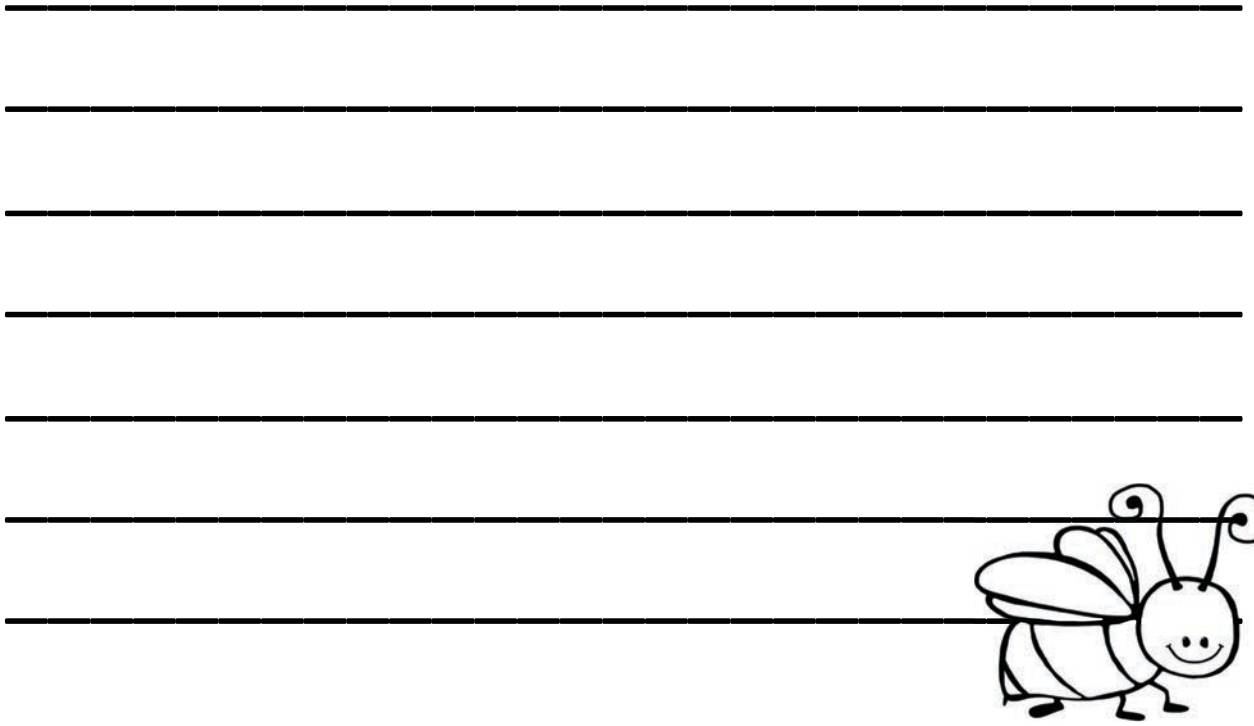
by _____

Blank handwriting practice lines consisting of four horizontal lines.



Blank handwriting practice lines consisting of four horizontal lines.





by _____

Bees



Four sets of handwriting practice lines. Each set consists of a solid top line, a dashed middle line, and a solid bottom line.

Bees



Bees



Order:

Family:

Genus:

Species:

Diet:

Locations:

Habitat:

Characteristics:

Bees

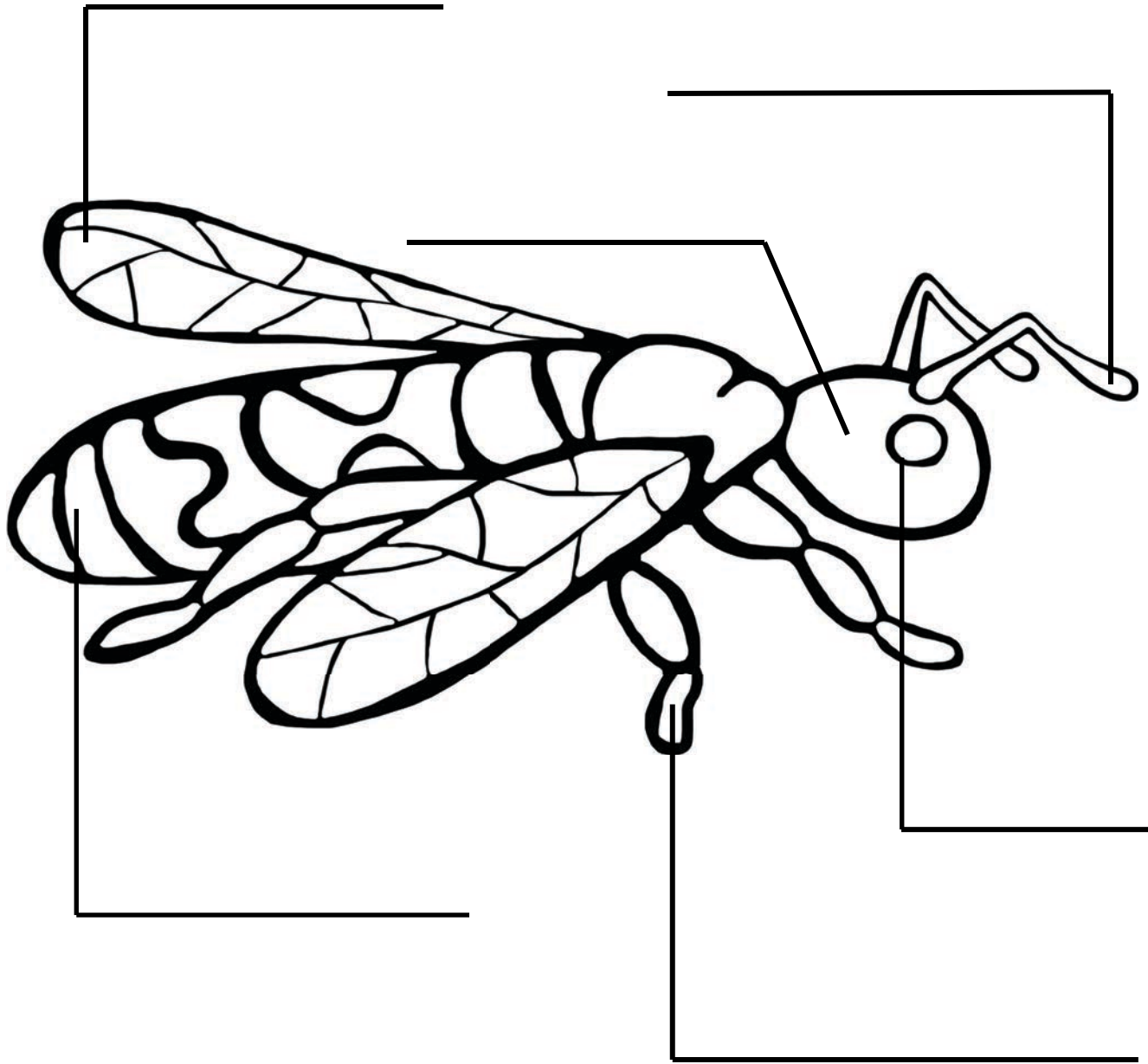
Honeybee



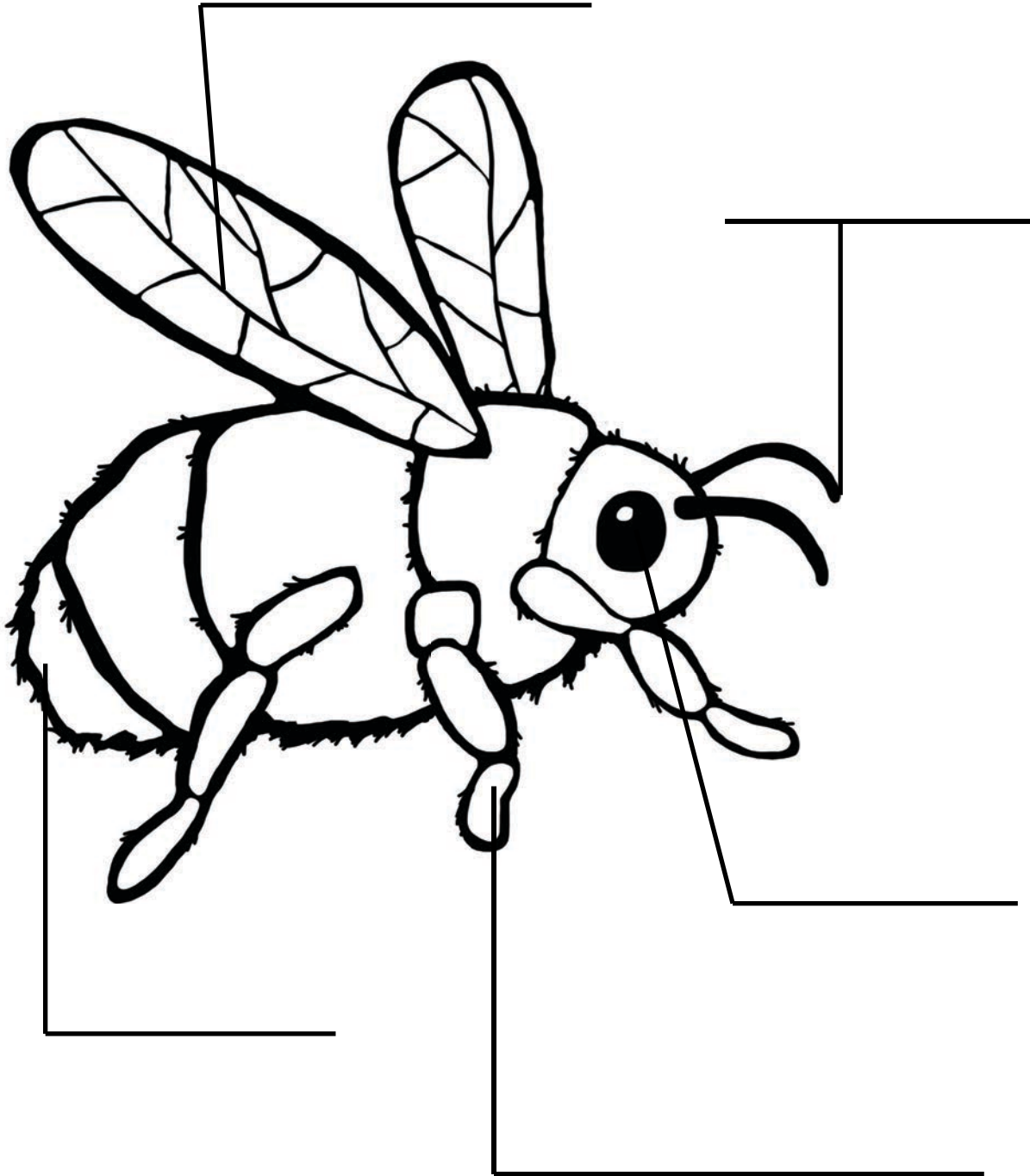
Bumblebee



Parts of a Honeybee

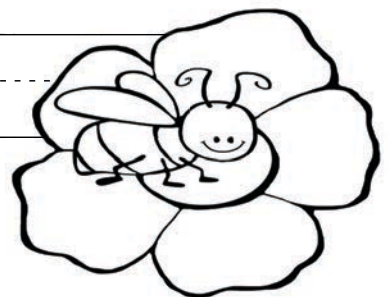


Parts of a Bumble bee



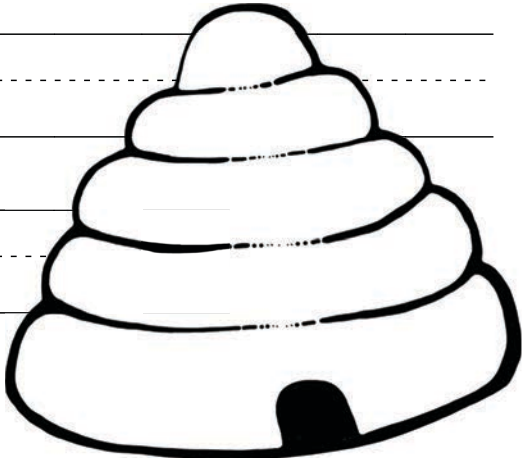
What do bees eat?

Handwriting practice area consisting of multiple sets of three horizontal lines: a solid top line, a dashed middle line, and a solid bottom line.



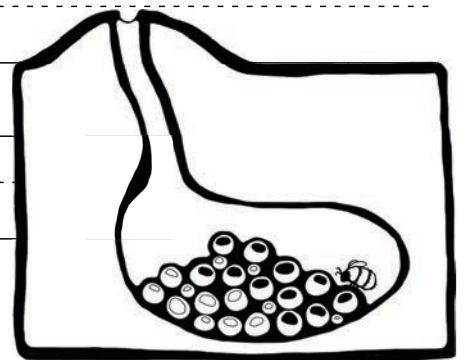
Types of Bee Hives

Handwriting practice area consisting of multiple sets of horizontal lines. Each set includes a solid top line, a dashed middle line, and a solid bottom line, providing a guide for letter height and placement.



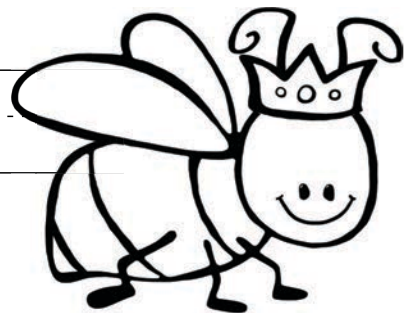
Types of Bee Hives

Handwriting practice area consisting of multiple sets of horizontal lines. Each set includes a solid top line, a dashed middle line, and a solid bottom line, providing a guide for letter height and placement.

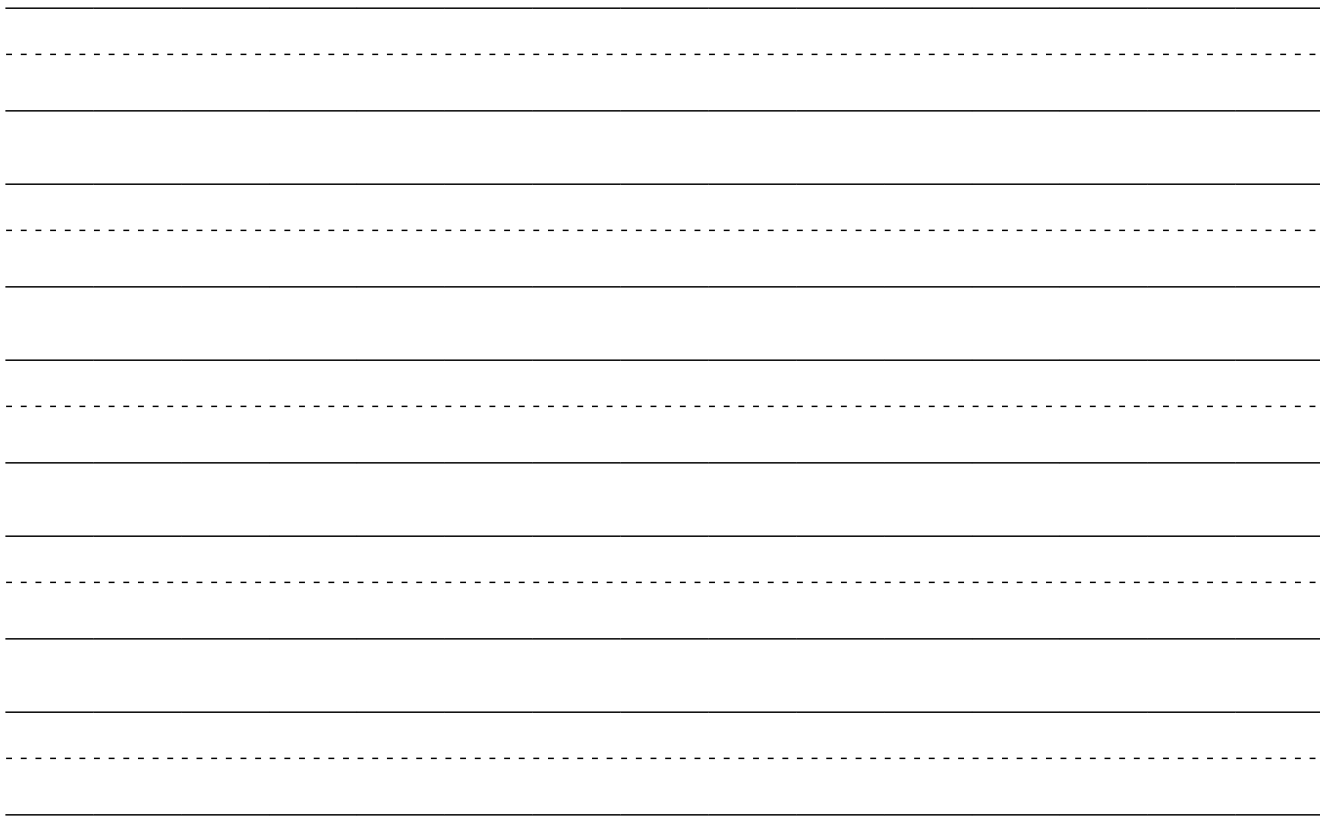
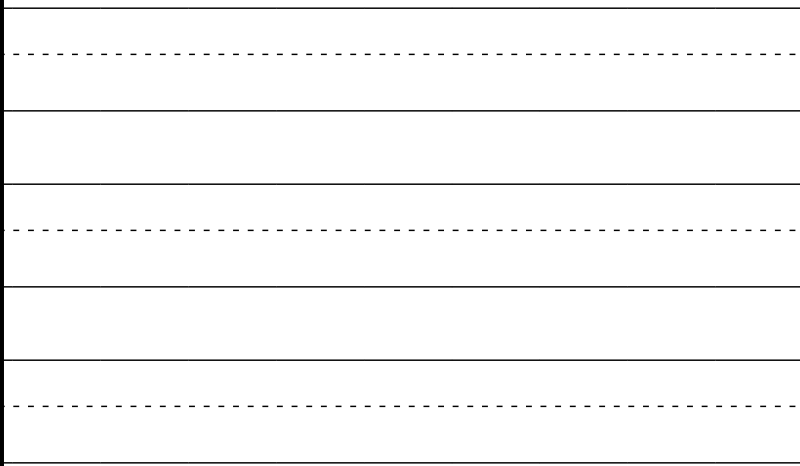


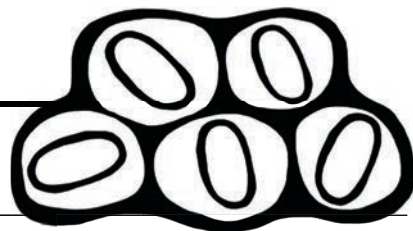
Queen Bee

Handwriting practice lines consisting of solid top and bottom lines with a dashed middle line. There are 10 sets of these lines for writing practice.



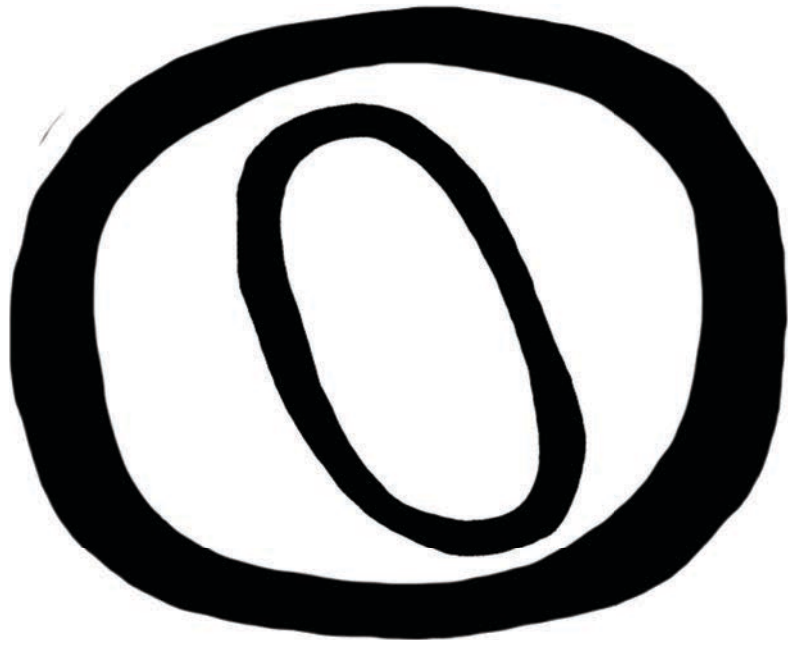
Eggs





Handwriting practice lines consisting of solid top and bottom lines with a dashed midline. There are five such sets of lines, each starting from the left edge of the page and extending to the right edge.

Handwriting practice lines consisting of solid top and bottom lines with a dashed midline. There are five such sets of lines, each starting from the left edge of the page and extending to the right edge.



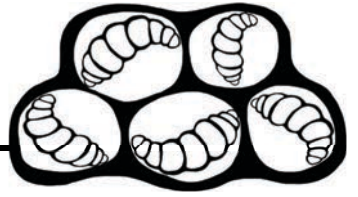
Handwriting practice lines consisting of solid top and bottom lines with a dashed middle line, repeated seven times.

Larva



Handwriting practice lines consisting of a solid top line, a dashed middle line, and a solid bottom line, repeated five times.

Handwriting practice lines consisting of a solid top line, a dashed middle line, and a solid bottom line, repeated five times.



Handwriting practice lines consisting of a solid top line, a dashed middle line, and a solid bottom line. This section contains five sets of such lines.

Handwriting practice lines consisting of a solid top line, a dashed middle line, and a solid bottom line. This section contains five sets of such lines, positioned to the right of the main body of the page.



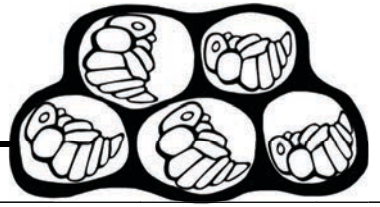
Handwriting practice lines consisting of solid top and bottom lines with a dashed middle line. There are five such sets of lines arranged vertically on the page.

Pupa



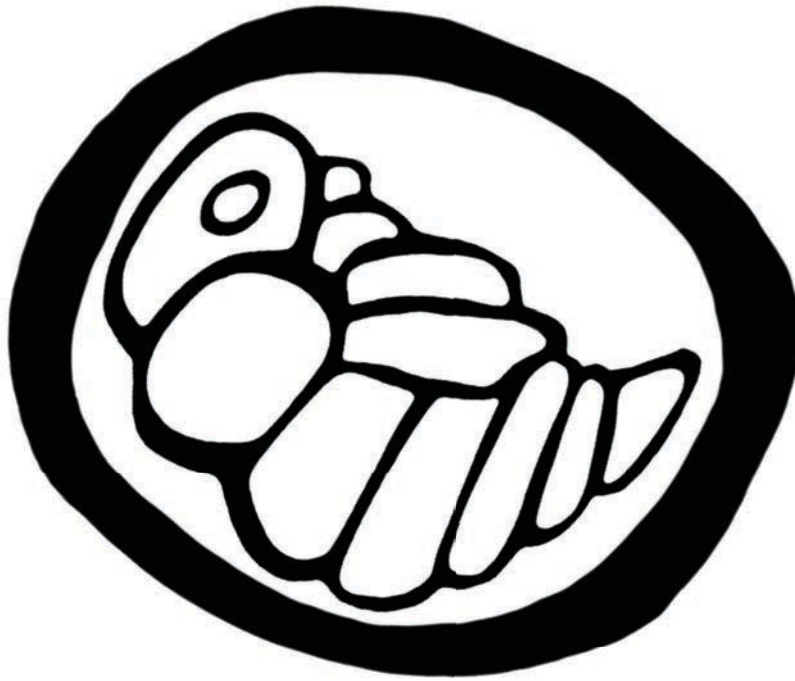
Four sets of handwriting lines, each consisting of a solid top line, a dashed middle line, and a solid bottom line, positioned to the right of the drawing box.

Five sets of handwriting lines, each consisting of a solid top line, a dashed middle line, and a solid bottom line, positioned below the drawing box.



Handwriting practice lines consisting of a solid top line, a dashed middle line, and a solid bottom line. The lines are spaced evenly down the page.

Handwriting practice lines consisting of a solid top line, a dashed middle line, and a solid bottom line. The lines are spaced evenly down the page.



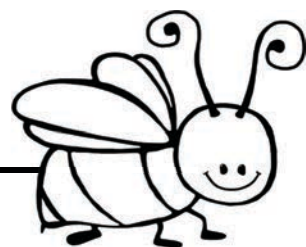
Handwriting practice lines consisting of four sets of horizontal lines. Each set includes a solid top line, a dashed middle line, and a solid bottom line.

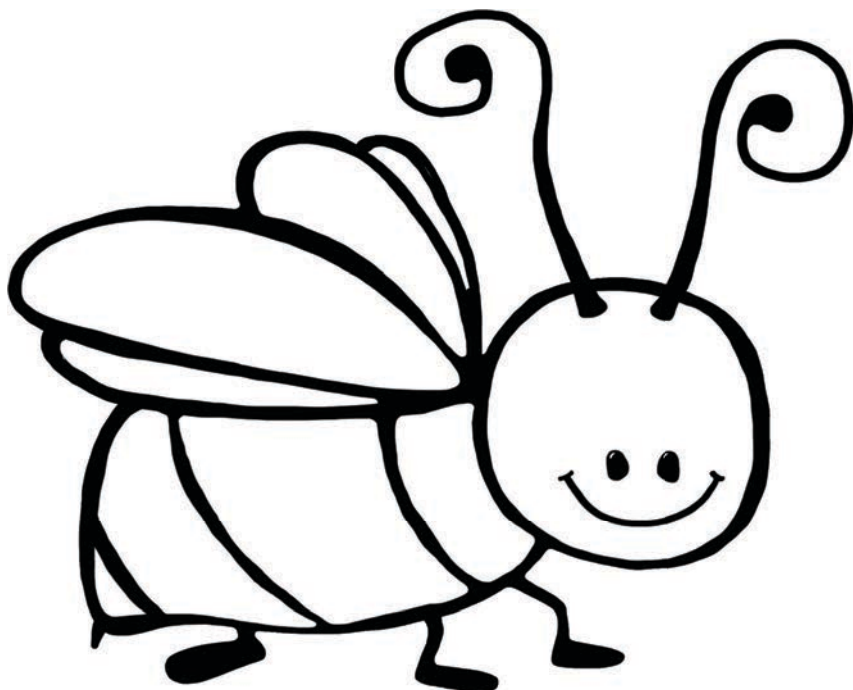
Bees



Handwriting practice lines consisting of a solid top line, a dashed middle line, and a solid bottom line, aligned with the right side of the drawing box.

Four sets of handwriting practice lines, each consisting of a solid top line, a dashed middle line, and a solid bottom line, spaced evenly down the page.





Handwriting practice lines consisting of solid top and bottom lines with a dashed middle line. There are five sets of these lines stacked vertically.

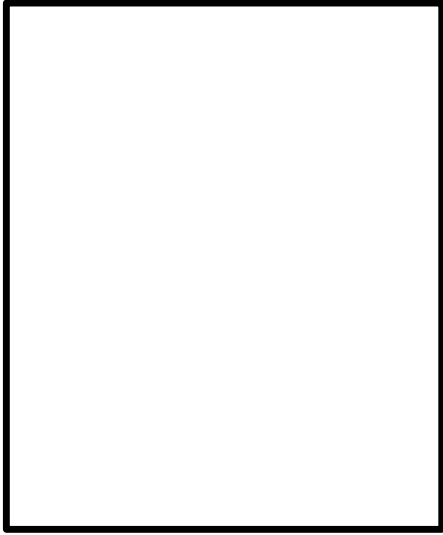


Handwriting practice area consisting of ten sets of horizontal lines. Each set includes a solid top line, a dashed midline, and a solid bottom line.

Handwriting practice area consisting of five sets of horizontal lines. Each set includes a solid top line, a dashed midline, and a solid bottom line.



Bees



Four sets of handwriting lines, each consisting of a solid top line, a dashed middle line, and a solid bottom line, extending to the right of the drawing box.

Three sets of handwriting lines, each consisting of a solid top line, a dashed middle line, and a solid bottom line, extending across the width of the page.

Four sets of handwriting lines, each consisting of a solid top line, a dashed middle line, and a solid bottom line, extending to the left of the drawing box.



Bees



Handwriting practice lines consisting of four sets of three horizontal lines (top solid, middle dashed, bottom solid).



Handwriting practice lines consisting of eight sets of three horizontal lines (top solid, middle dashed, bottom solid).

Bumble Bees

Handwriting practice lines consisting of four sets of three horizontal lines (top solid, middle dashed, bottom solid).



Handwriting practice lines consisting of six sets of three horizontal lines (top solid, middle dashed, bottom solid).

Honeybees

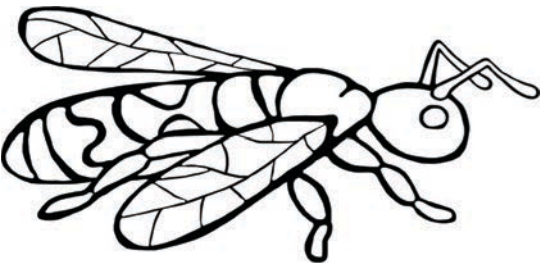
Handwriting practice lines consisting of solid top and bottom lines with a dashed middle line. There are four sets of these lines stacked vertically.



Handwriting practice lines consisting of solid top and bottom lines with a dashed middle line. There are six sets of these lines stacked vertically, spanning the width of the page.



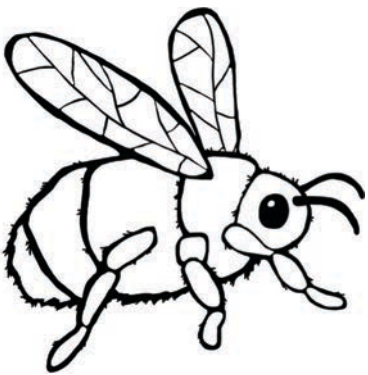
Handwriting practice lines consisting of multiple sets of three horizontal lines: a solid top line, a dashed middle line, and a solid bottom line.



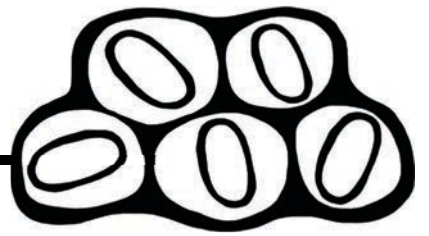
Handwriting practice lines consisting of five sets of three horizontal lines: a solid top line, a dashed middle line, and a solid bottom line.

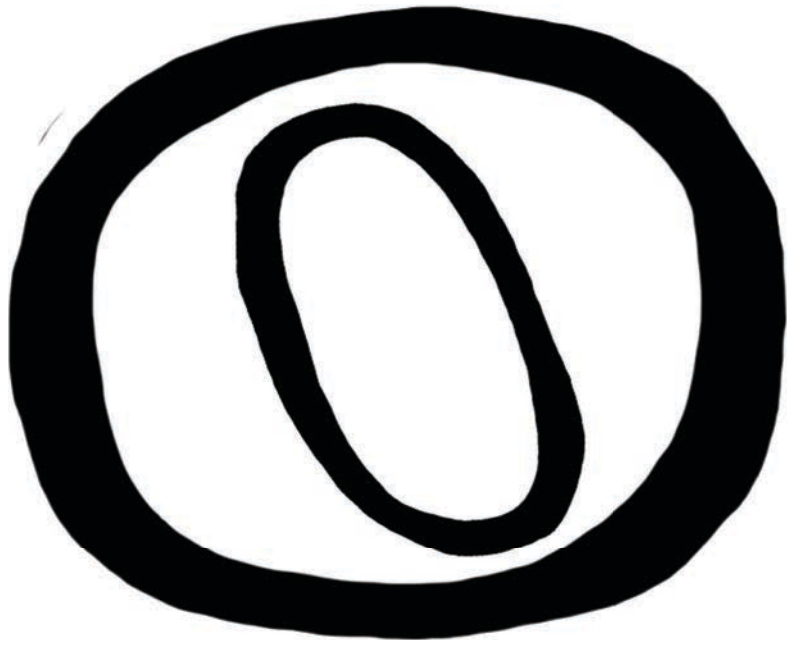


Handwriting practice lines consisting of multiple sets of three horizontal lines: a solid top line, a dashed middle line, and a solid bottom line.



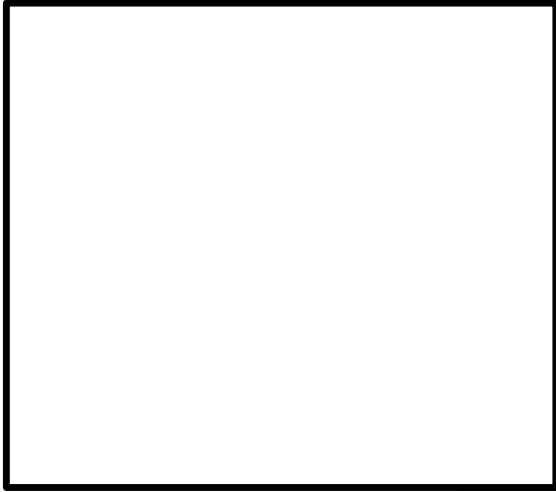
Handwriting practice lines consisting of multiple sets of three horizontal lines: a solid top line, a dashed middle line, and a solid bottom line.





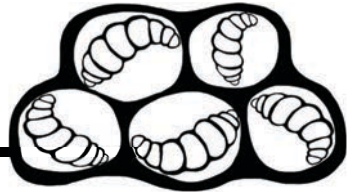
Handwriting practice lines consisting of ten horizontal black lines, evenly spaced, extending across the width of the page.

Larva



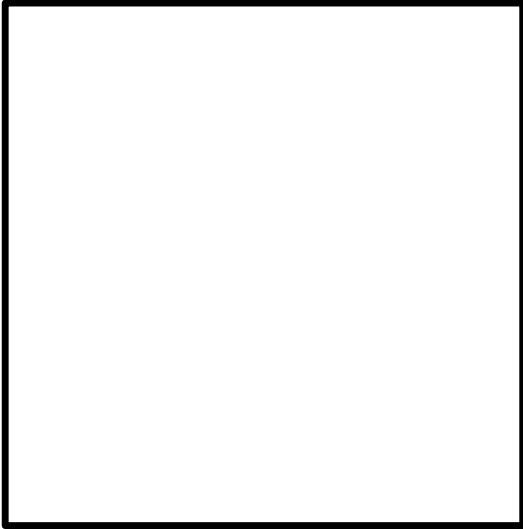
Three horizontal lines for writing, located to the right of the drawing box.

Eleven horizontal lines for writing, spanning the width of the page below the first set of lines.



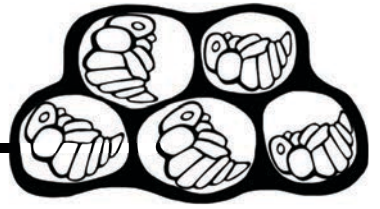


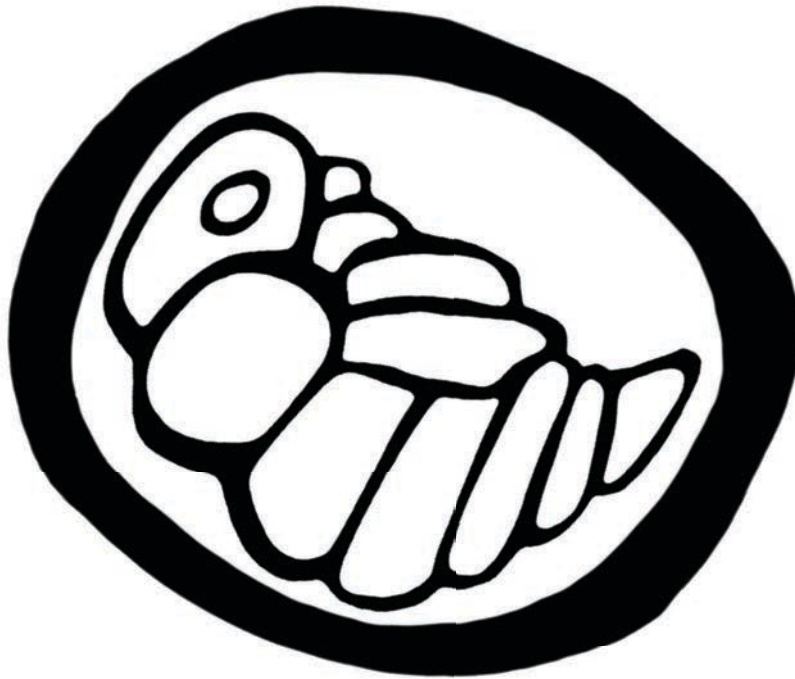
Pupa

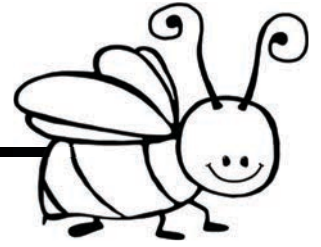


Four horizontal lines for writing, aligned with the right side of the drawing box.

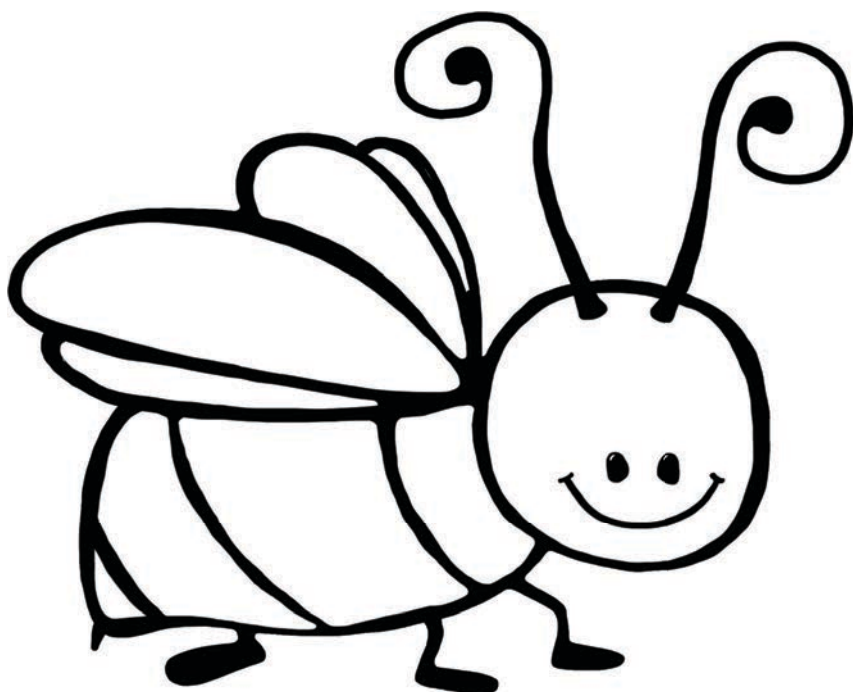
Eight horizontal lines for writing, spanning the width of the page.



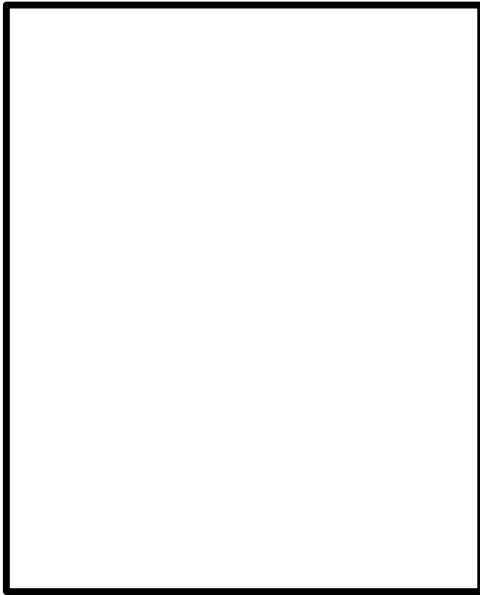


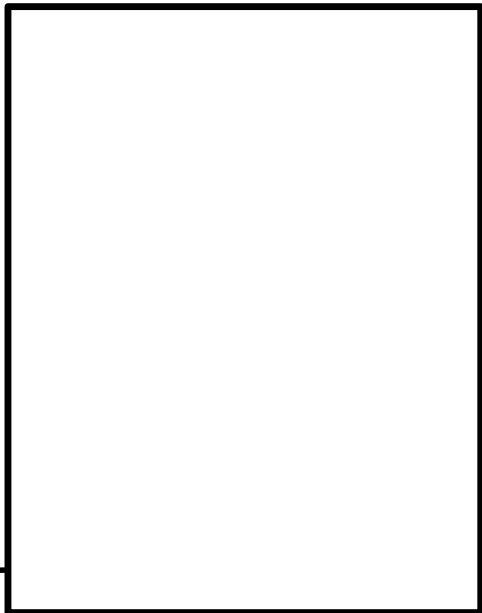






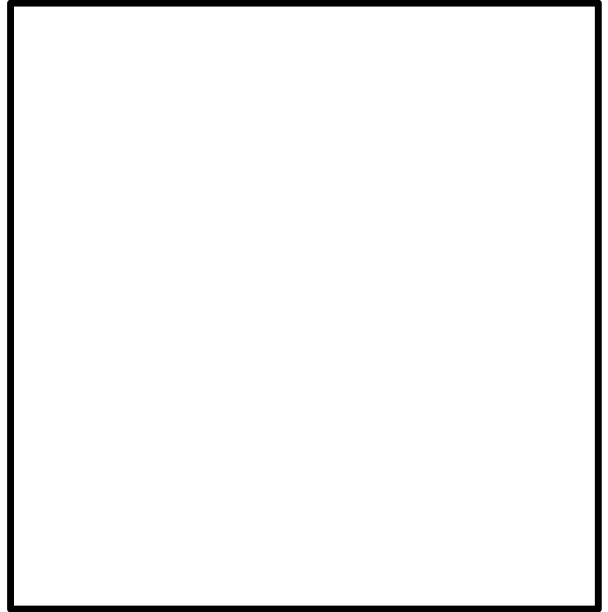
Bees





Bees

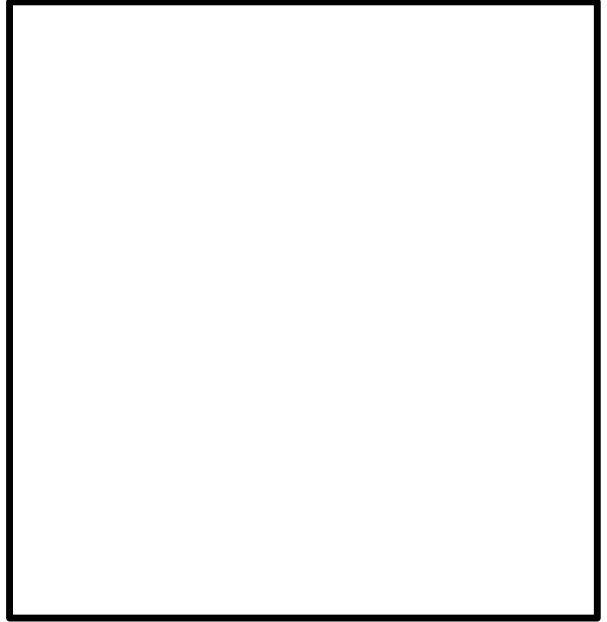
Bumble Bees



Five horizontal lines for writing, located to the left of the drawing box.

Eight horizontal lines for writing, spanning the width of the page below the drawing box.

Honeybees



Five horizontal lines for writing notes, positioned to the left of the drawing box.

Eight horizontal lines for writing notes, spanning the width of the page below the drawing box.

