

Sandforms



© 2019 Stacey Jones at Simple Living. Creative Learning

[PINTEREST](#) | [WEBSITE](#) | [FACEBOOK](#)

All rights reserved. No part of this book may be reproduced, stored or transmitted in any form by any means without prior permission of the publisher.

This workbook is licensed for personal/family use only.

YOU MAY:

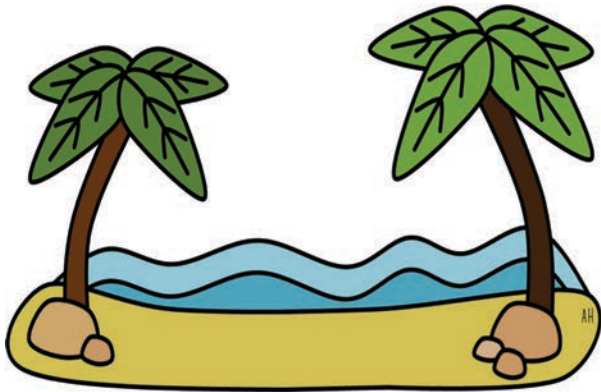
- Use these files for personal use only.
- Use in your personal classroom
- Download the files to your personal computer.
- Print as many copies as you would like to use for your personal use.
- Direct other to our website: <https://simplelivingcreativelearning.com>

YOU MAY NOT:

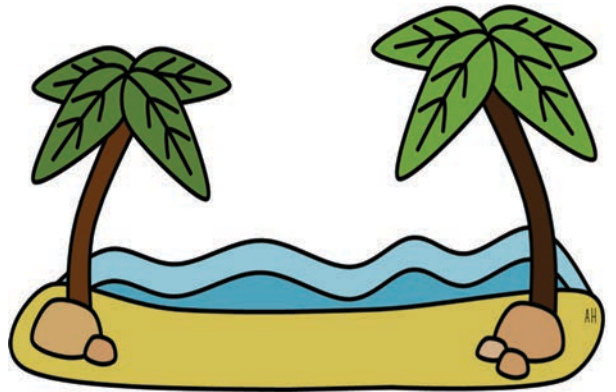
- Edit any of these printables.
- Share the files with anyone else.
- Store or sell them on any website.
- Claim them as your own.
- Print and sell or distribute them to others

Graphics and Font:



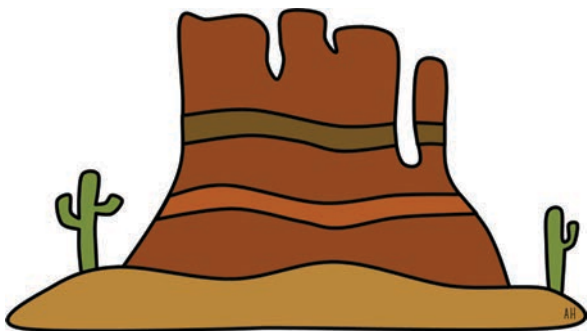


beach

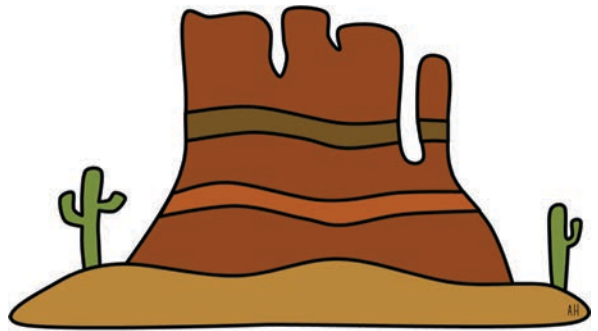


beach

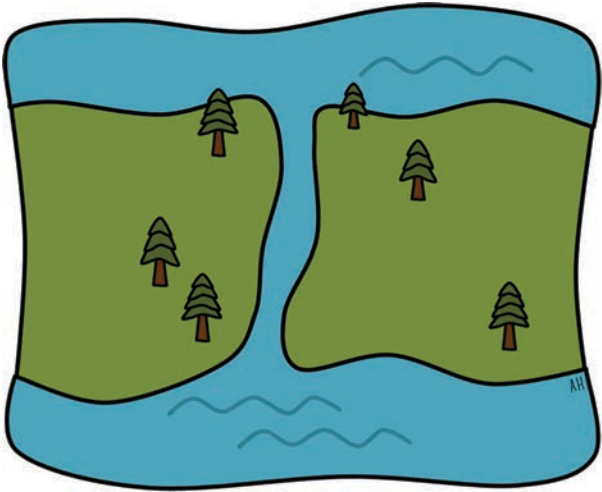
© Simple Living. Creative Learning



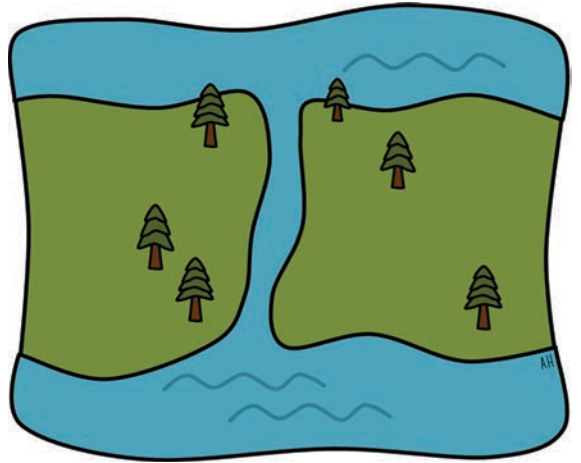
butte



butte

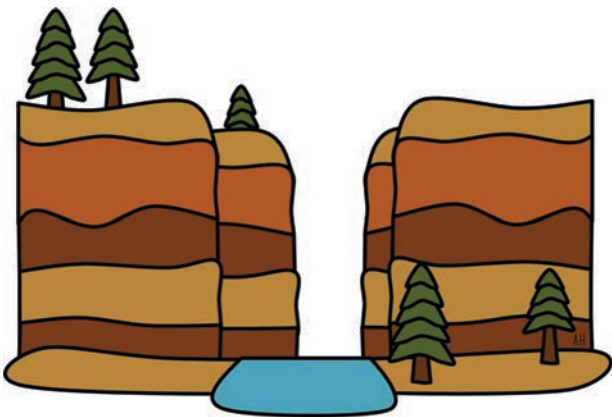


canal

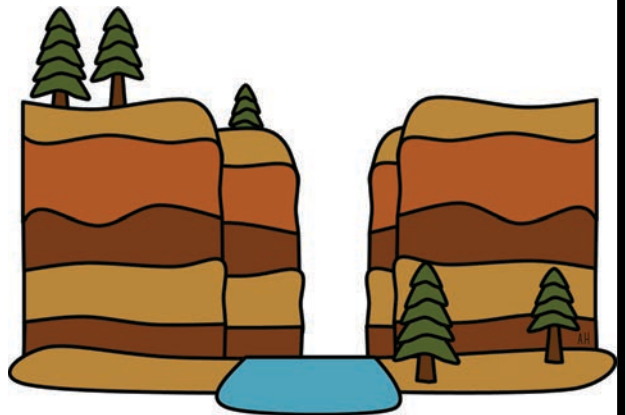


canal

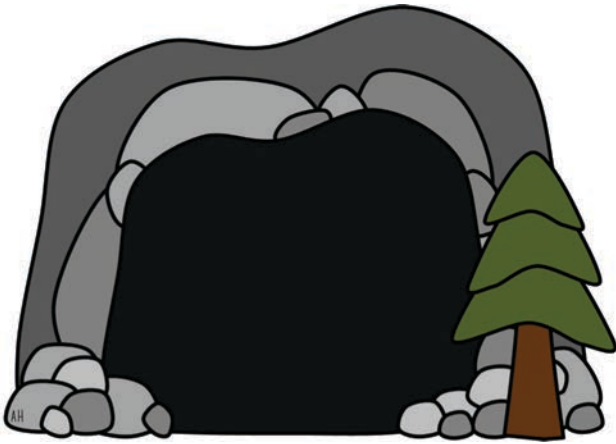
© Simple Living. Creative Learning



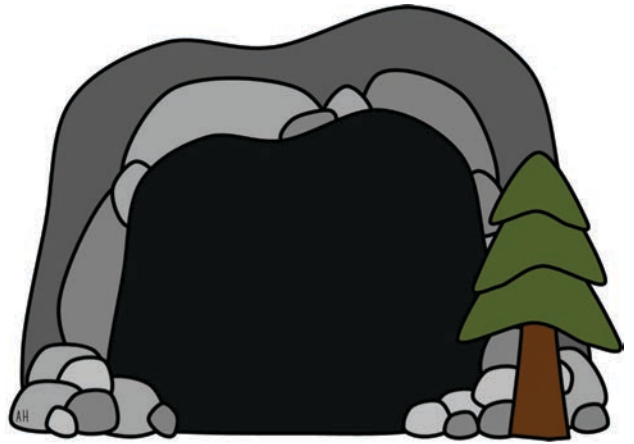
canyon



canyon

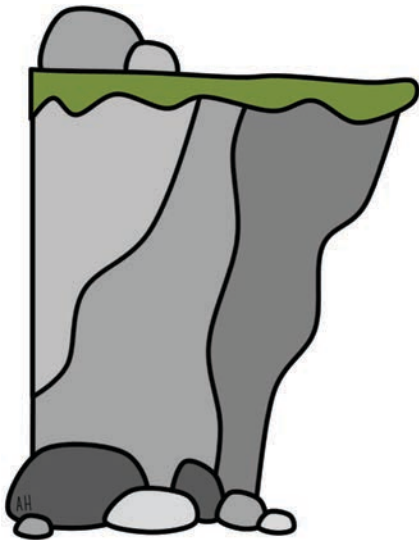


cave

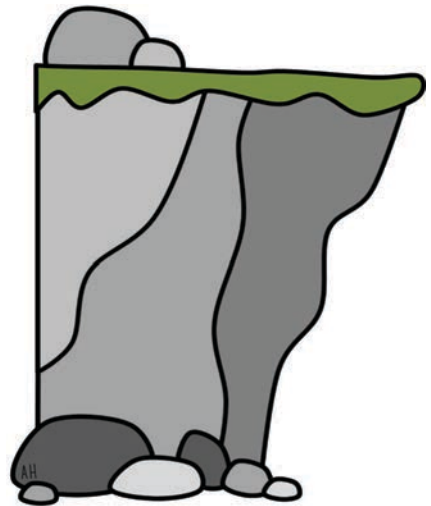


cave

© Simple Living. Creative Learning



cliff



cliff

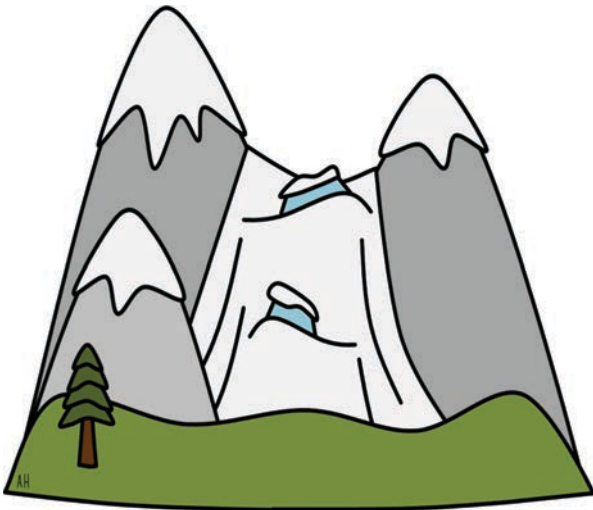


delta

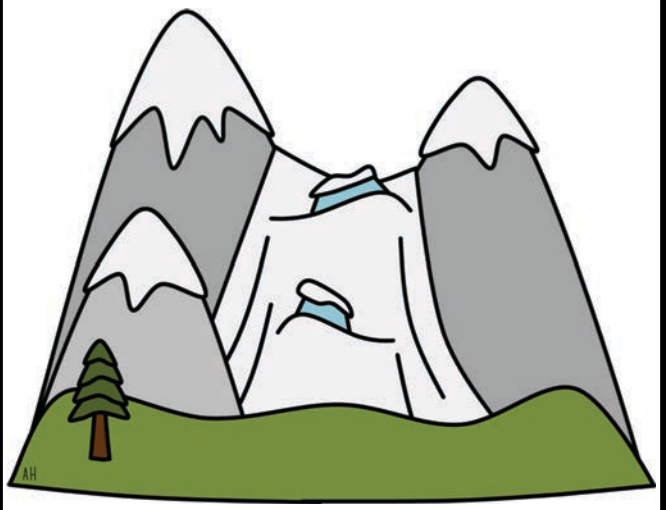


delta

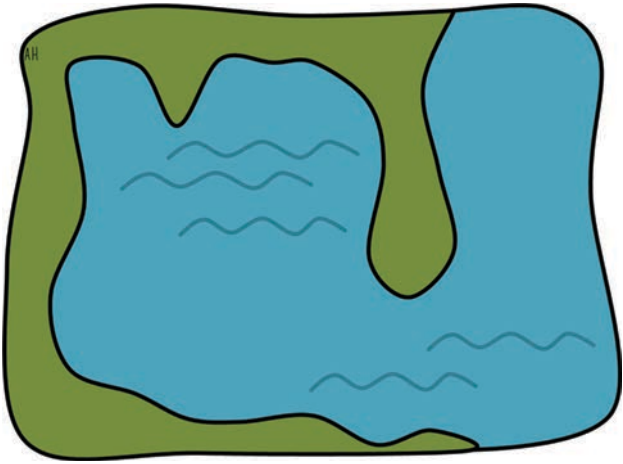
© Simple Living. Creative Learning



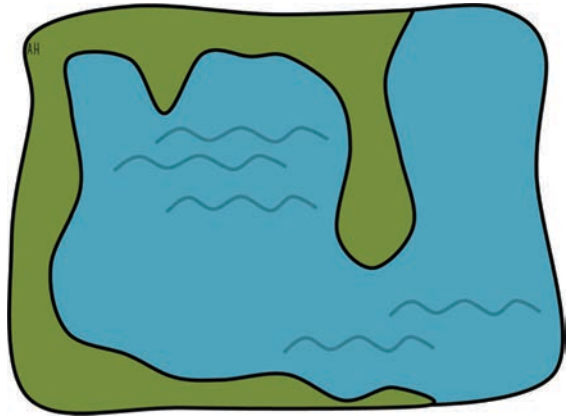
glacier



glacier

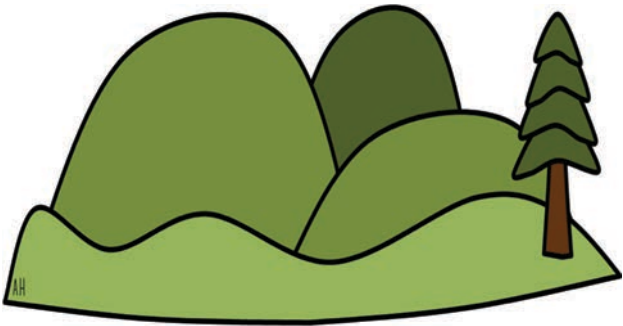


gulf

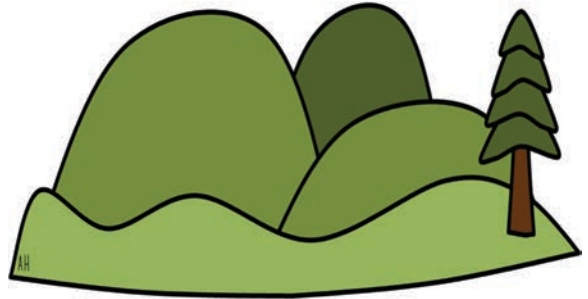


gulf

© Simple Living. Creative Learning



hills



hills

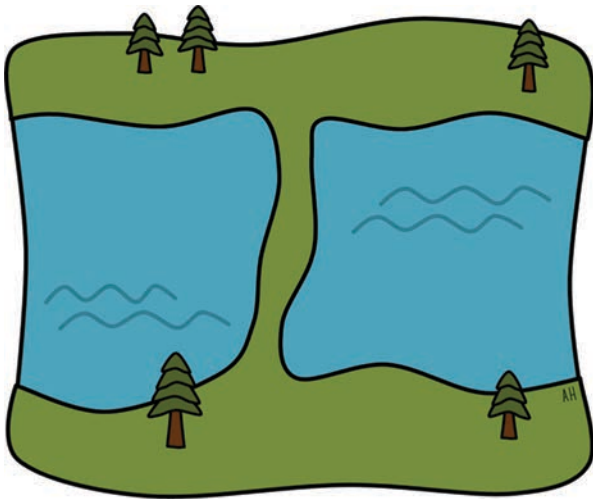


island

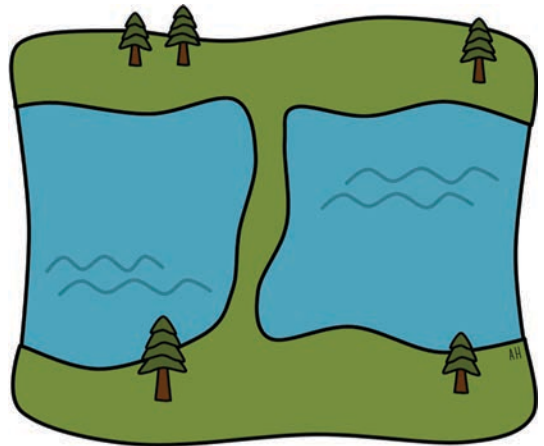


island

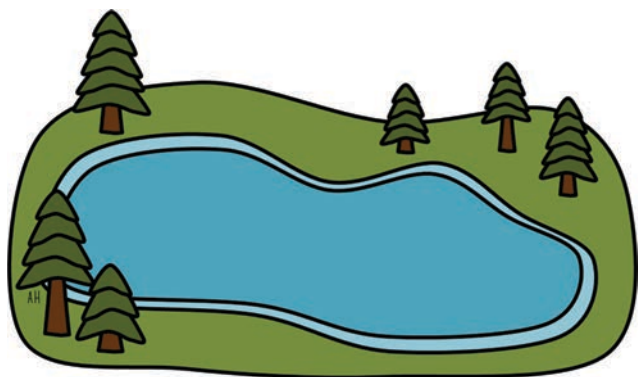
© Simple Living. Creative Learning



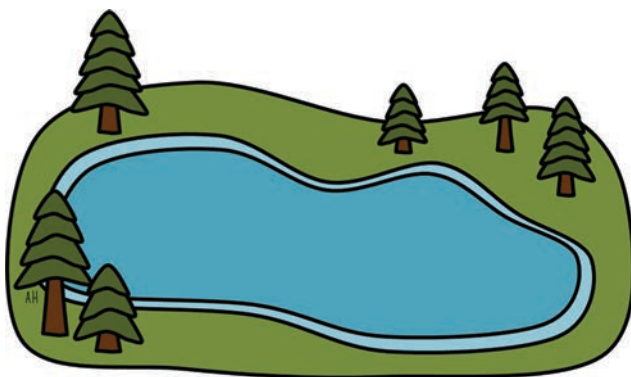
isthmus



isthmus

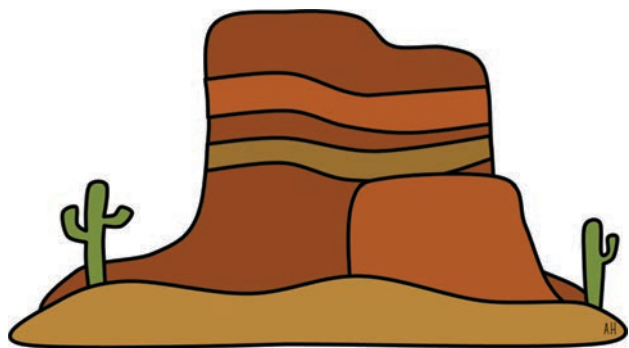


lake

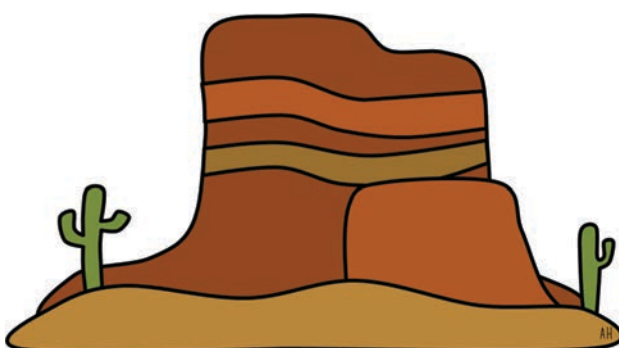


lake

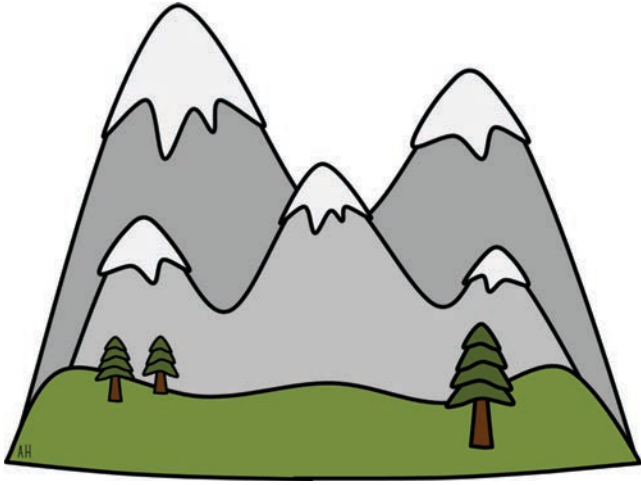
© Simple Living. Creative Learning



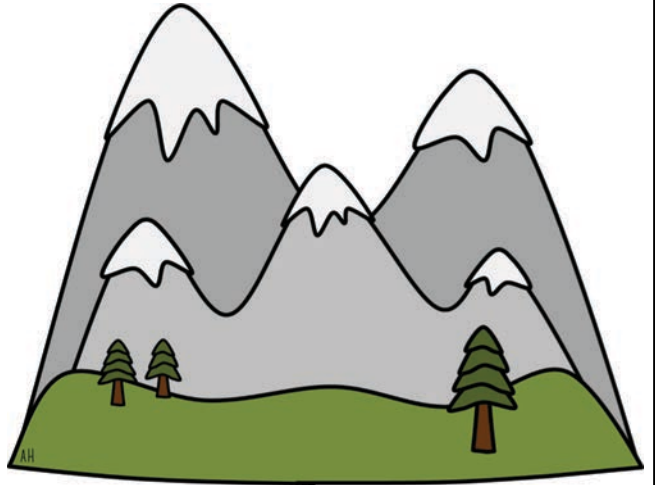
mesa



mesa



mountains



mountains

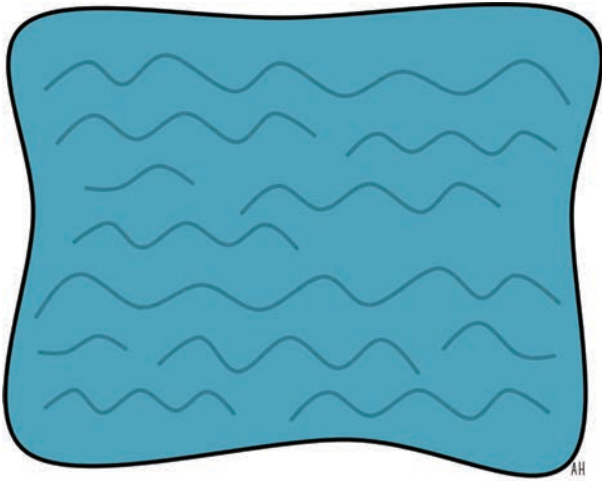
© Simple Living. Creative Learning



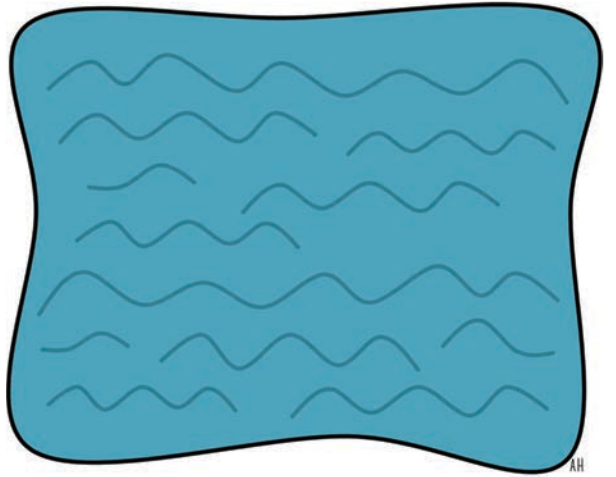
oasis



oasis

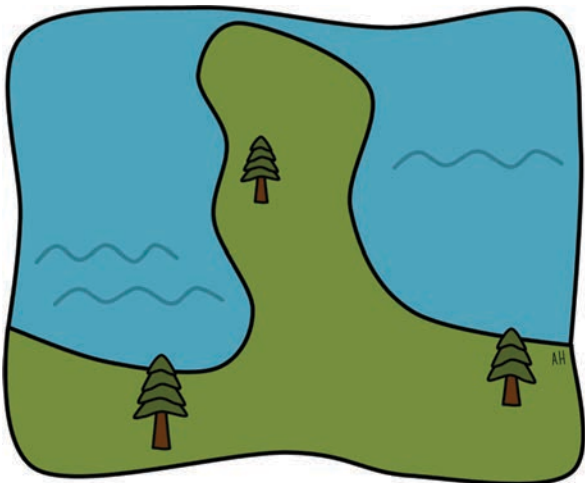


ocean

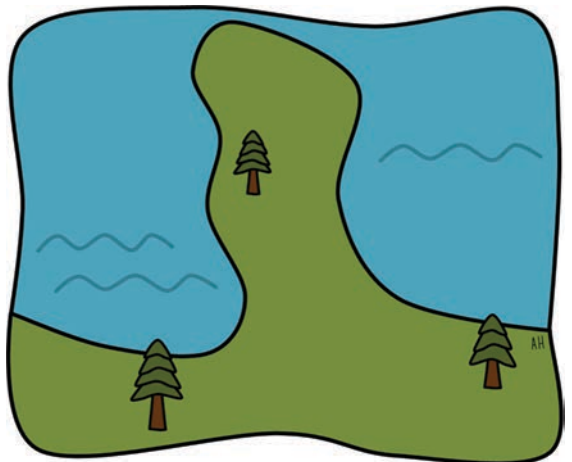


ocean

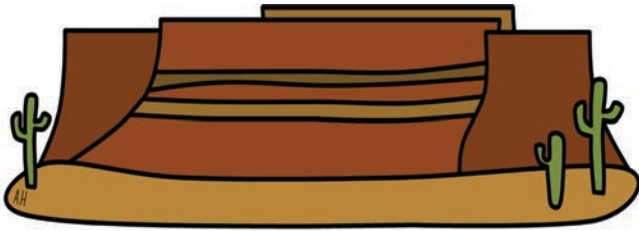
© Simple Living. Creative Learning



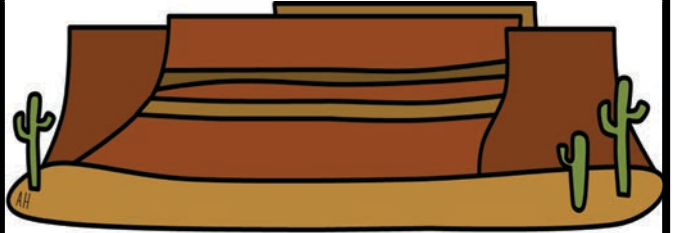
peninsula



peninsula

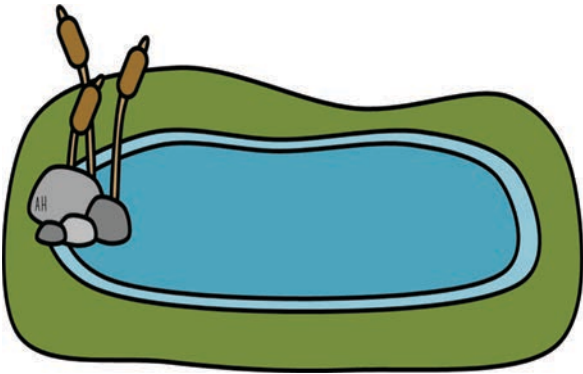


plateau

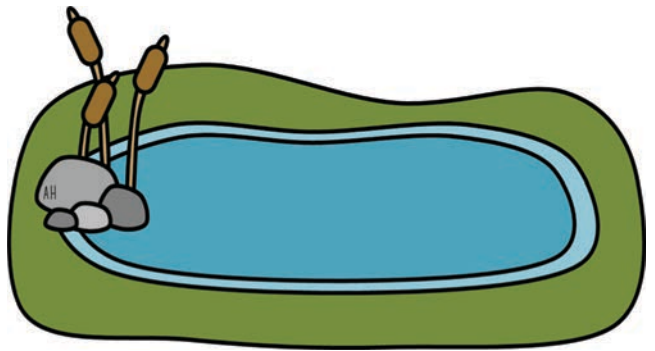


plateau

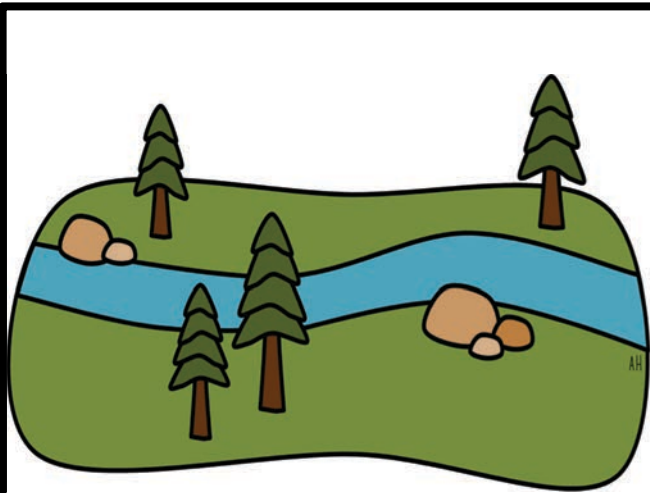
© Simple Living. Creative Learning



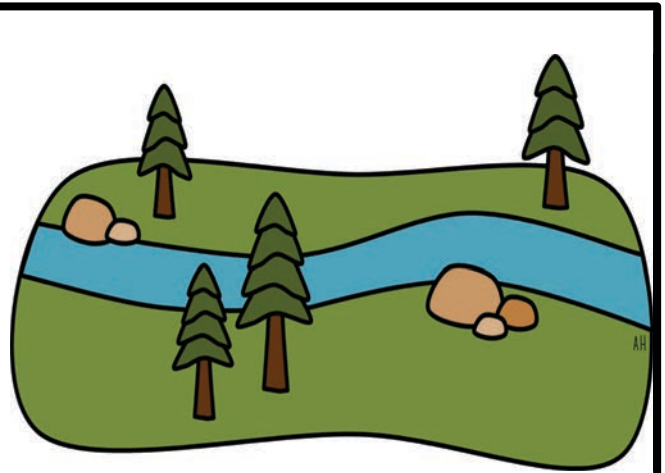
pond



pond

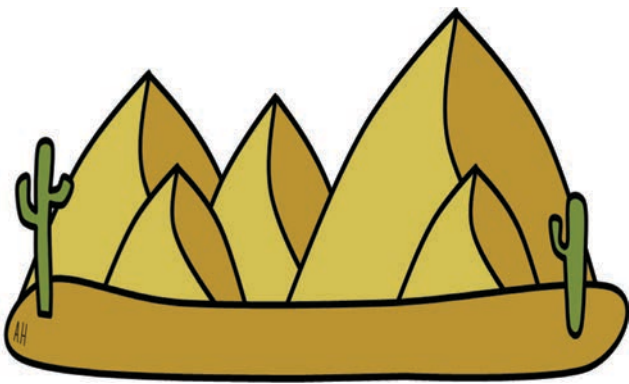


river

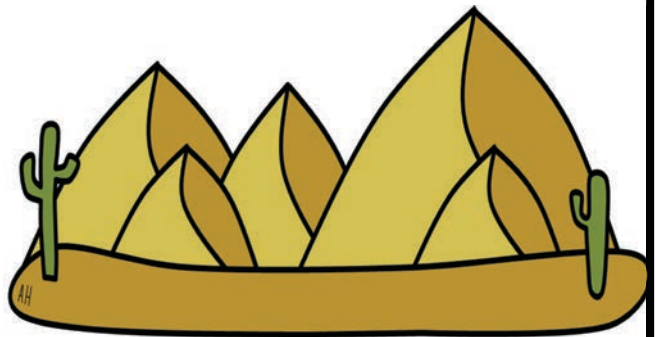


river

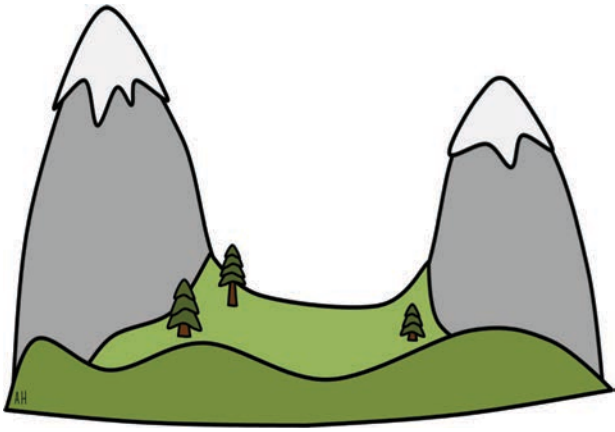
© Simple Living. Creative Learning



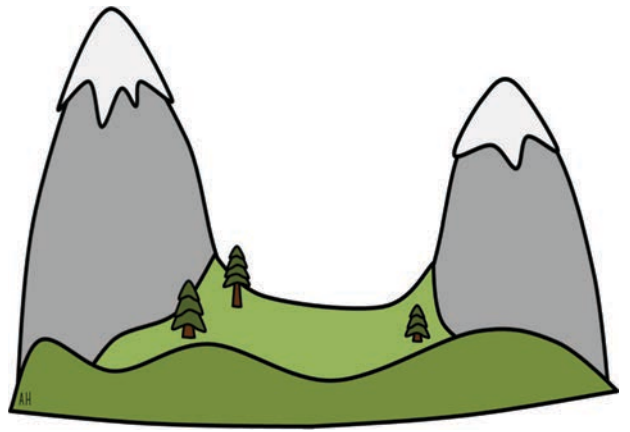
sand dunes



sand dunes

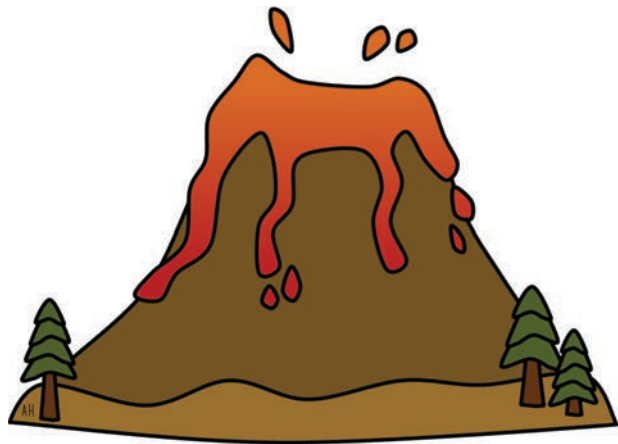


valley



valley

© Simple Living. Creative Learning



volcano



volcano

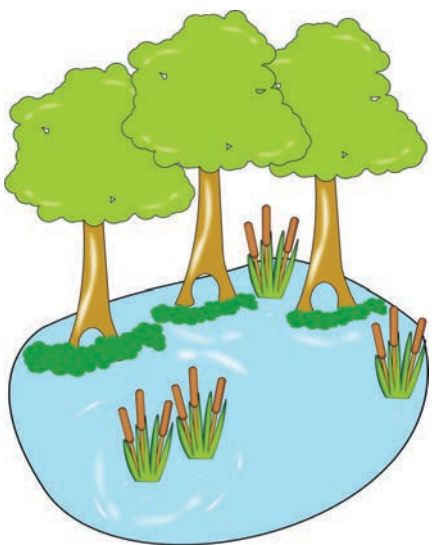


waterfall

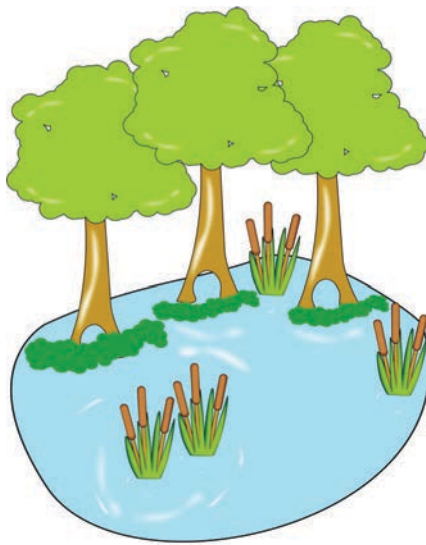


waterfall

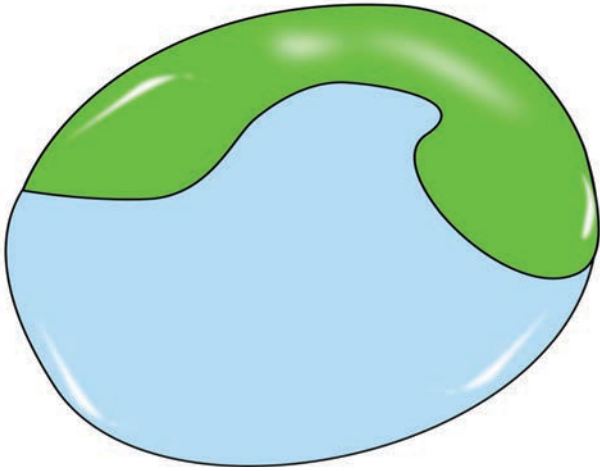
© Simple Living. Creative Learning



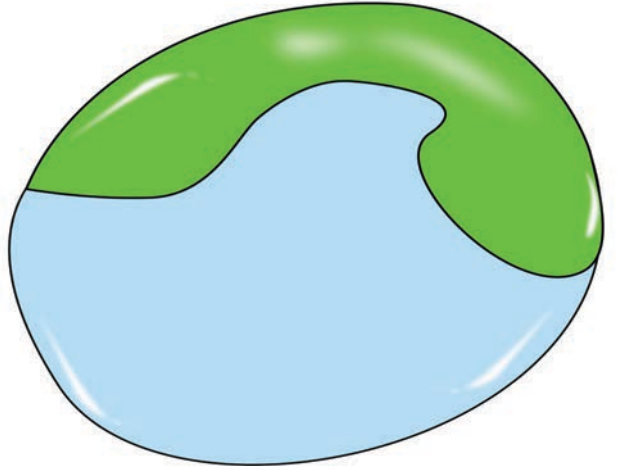
swamp



swamp



bay



bay

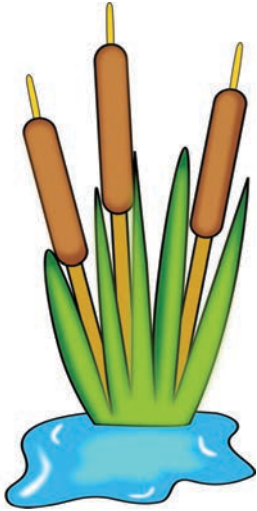
© Simple Living. Creative Learning



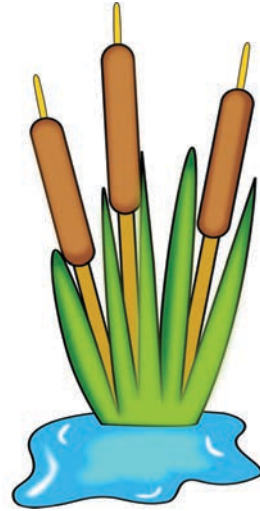
geyser



geyser

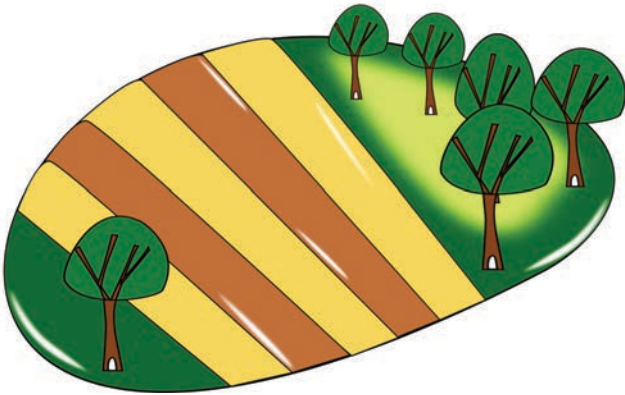


marsh

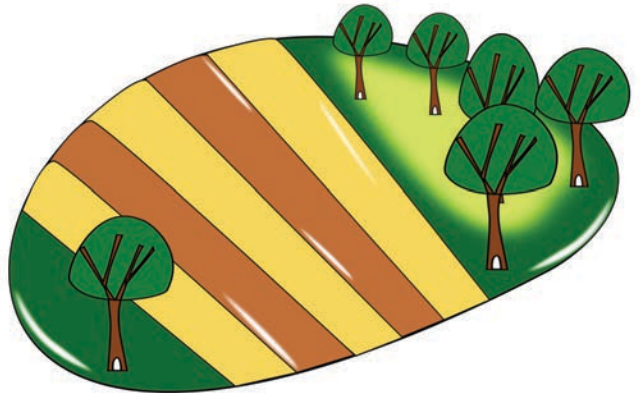


marsh

© Simple Living. Creative Learning



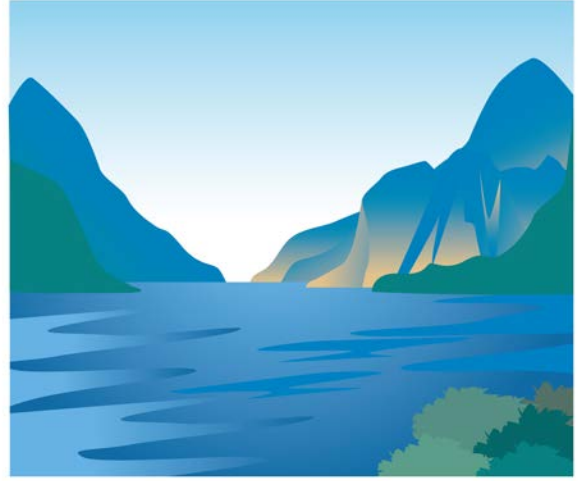
plain



plain



fjord



fjord

© Simple Living. Creative Learning

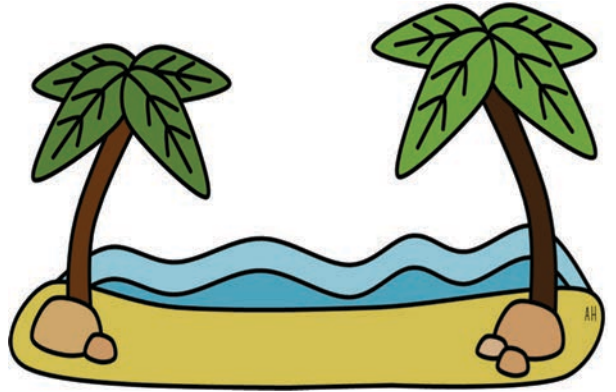


archipelago



archipelago

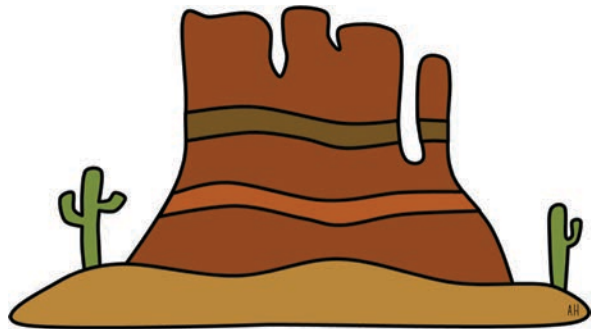
A beach usually consists of loose particles such as sand, gravel or pebbles and are situated along the coast near an ocean, sea, lake or river.



beach

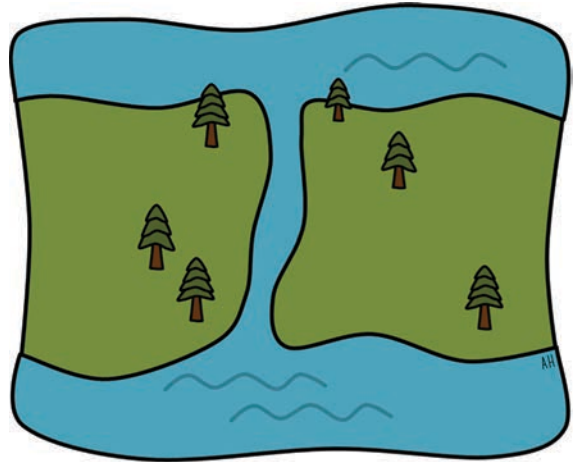
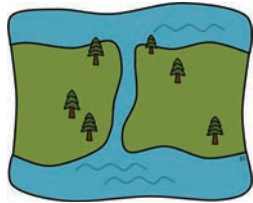
© Simple Living. Creative Learning

A butte is an isolated hill with steep sides and a relatively small, flat top.



butte

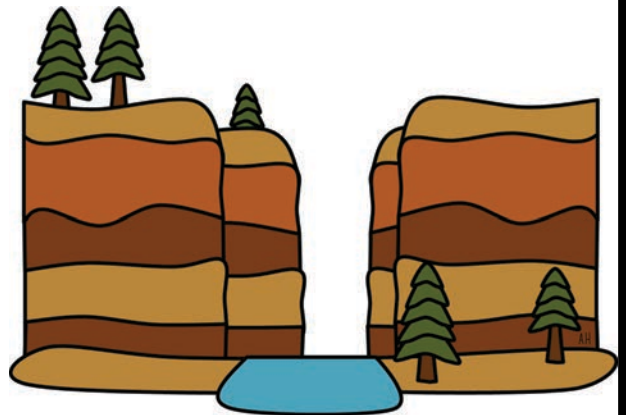
Canals are channels of water made by humans.



canal

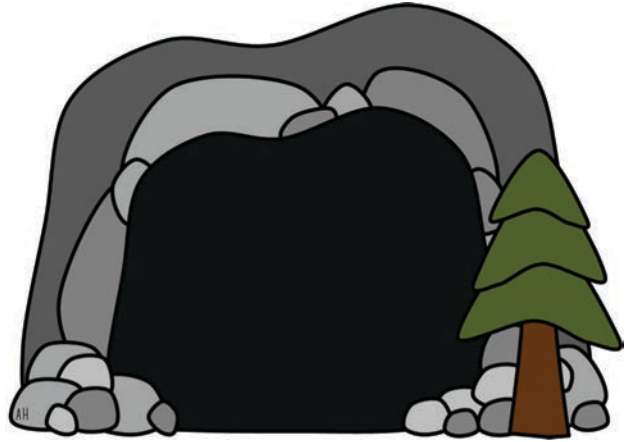
© Simple Living. Creative Learning

A canyon is a deep, narrow valley with high, steep walls.



canyon

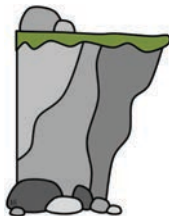
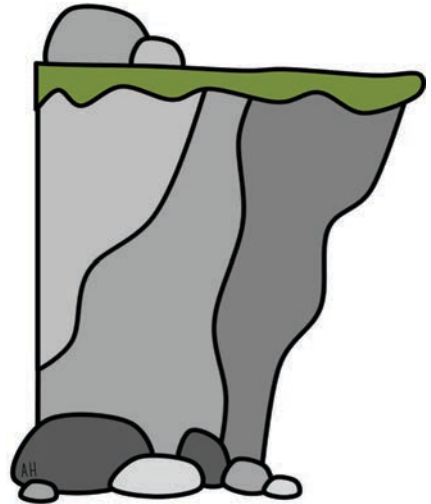
A cave is a hollow place in the ground that is large enough for a human to fit inside.



cave

© Simple Living. Creative Learning

A cliff is a steep, vertical rock face, that are usually found on coasts and in mountainous areas.



cliff

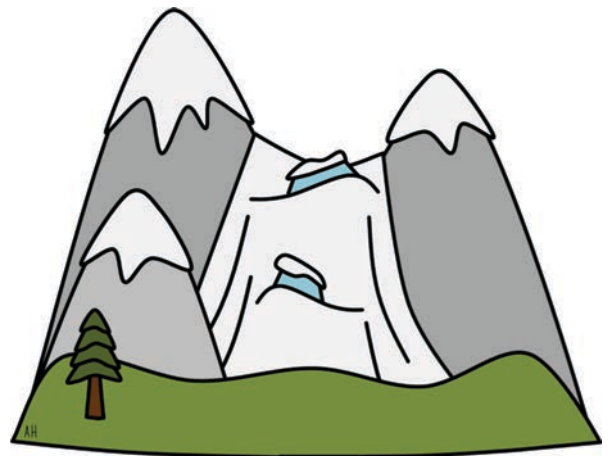
River deltas form at the mouth of a river where it flows into an ocean, sea, lake or reservoir. They form over time from deposits of sediment carried by the river.



delta

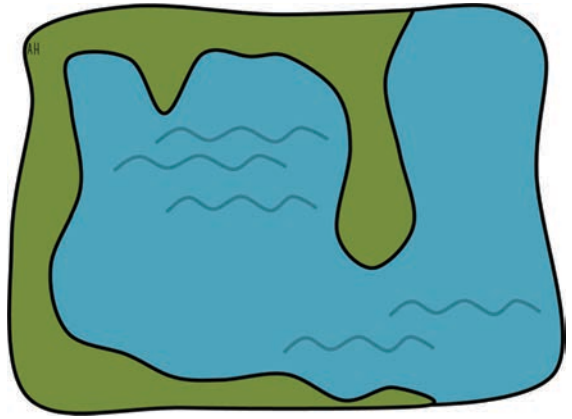
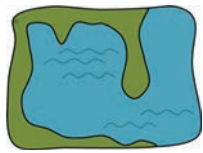
© Simple Living. Creative Learning

A glacier is a large body of ice that moves very slowly across the Earth's surface.



glacier

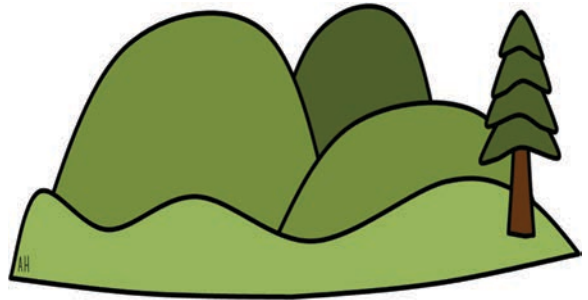
A gulf is a large bay that is partly enclosed by land.



gulf

© Simple Living. Creative Learning

Hills are smaller than mountains but higher than their surrounding areas.



hills

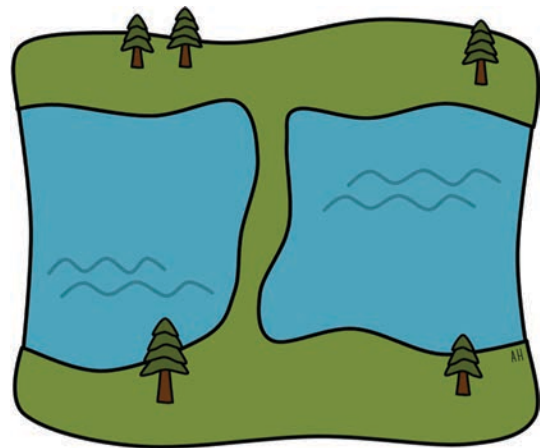
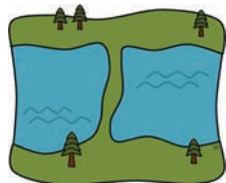
An island is a small piece of land with water all around it.



island

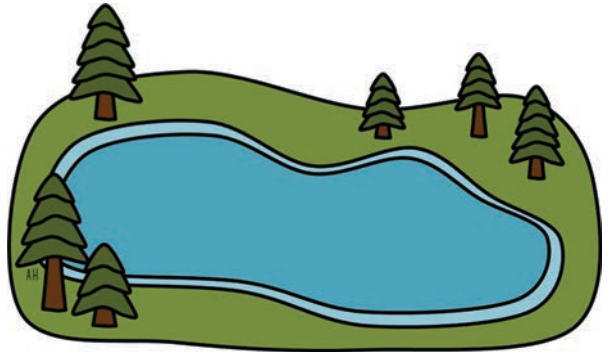
© Simple Living. Creative Learning

An isthmus is a narrow stretch of land which joins two large land masses.



isthmus

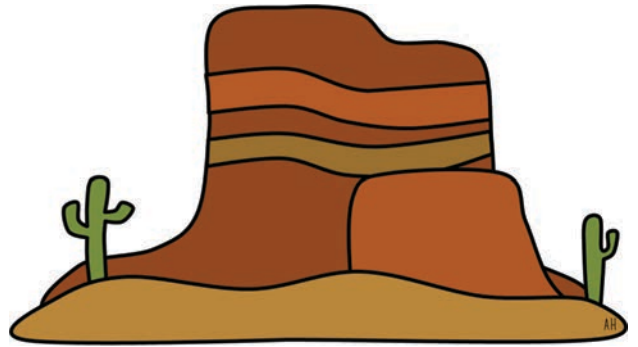
A lake is a large body of water that is surrounded by land.



lake

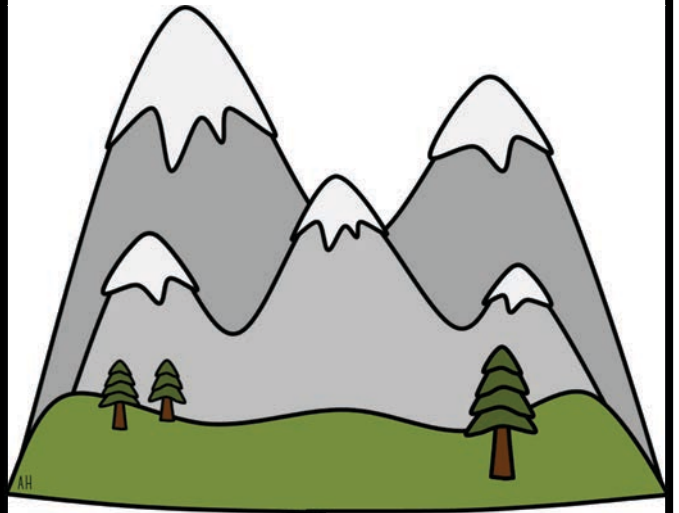
© Simple Living. Creative Learning

A mesa is an elevated area of land with a flat top and steep sides.



mesa

Mountains are tall pieces of land with steep sides and a pointed tip called a peak.



mountains

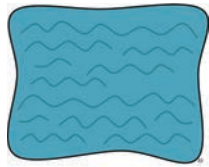
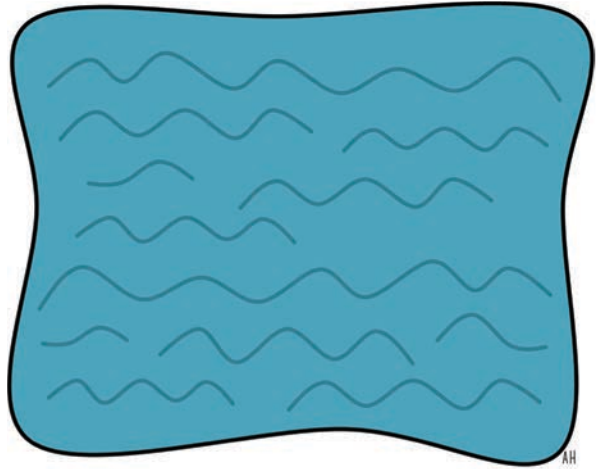
© Simple Living. Creative Learning

An oasis is a place in the desert where a pool of water is found surrounded by trees.



oasis

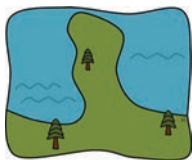
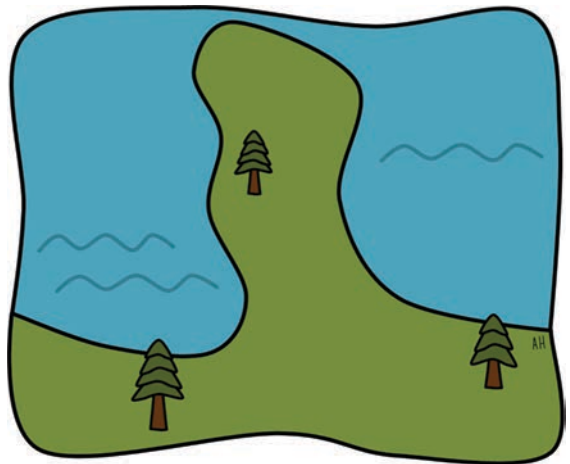
An ocean is a very large body of salt water that surrounds a continent.



ocean

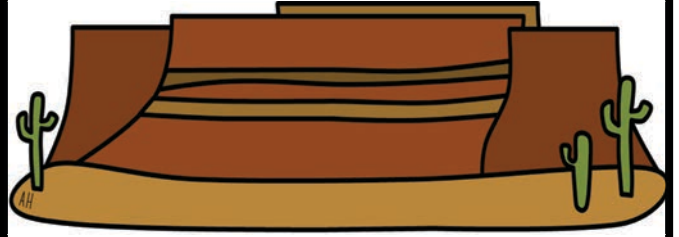
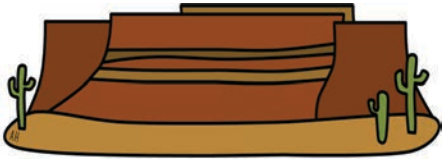
© Simple Living. Creative Learning

A peninsula is a piece of land that is surrounded by water on three sides.



peninsula

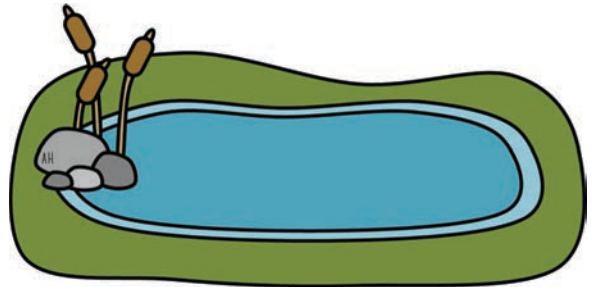
A plateau is a flat topped highland with steep sides.



plateau

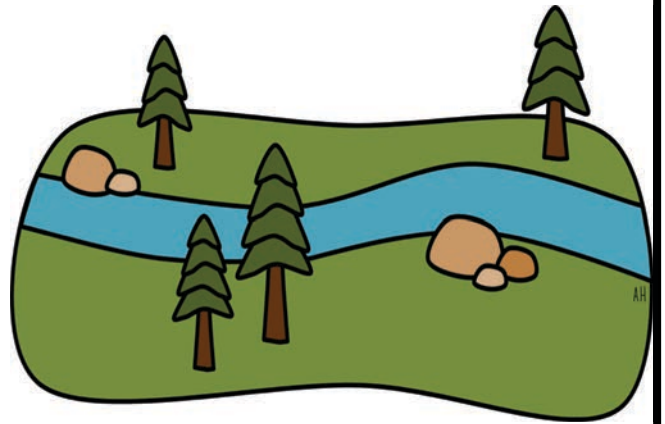
© Simple Living. Creative Learning

A pond is a small body of water (smaller than a lake) surrounded by land on all sides.



pond

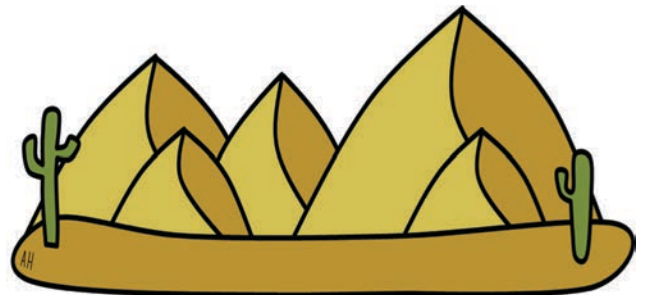
A river is a large, flowing body of fresh water. It usually empties into the ocean.



river

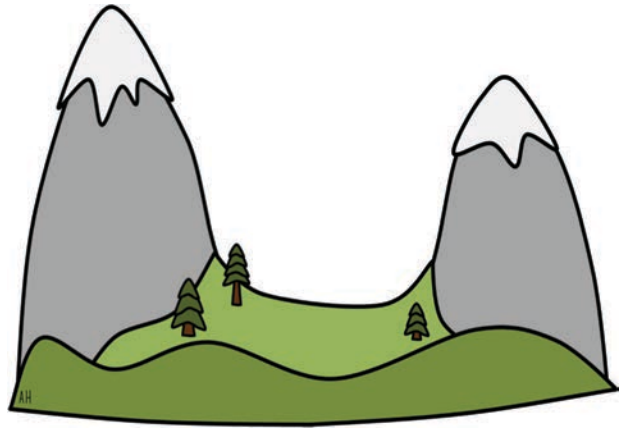
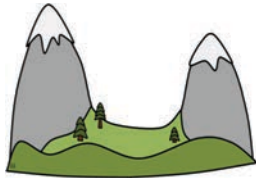
© Simple Living. Creative Learning

Sand dunes are huge hills of sand formed by winds.



sand dunes

A valley is an area of low land between two mountains or hills.



valley

© Simple Living. Creative Learning

A volcano is a mountain that has formed when lava rises through the Earth's crust.



volcano

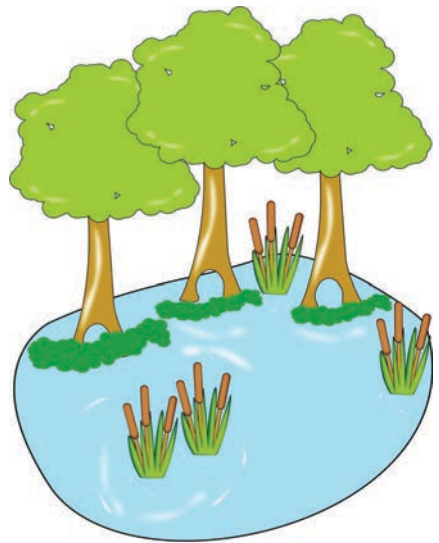
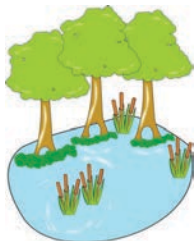
A waterfall is a place where a river or stream flows over a steep cliff.



waterfall

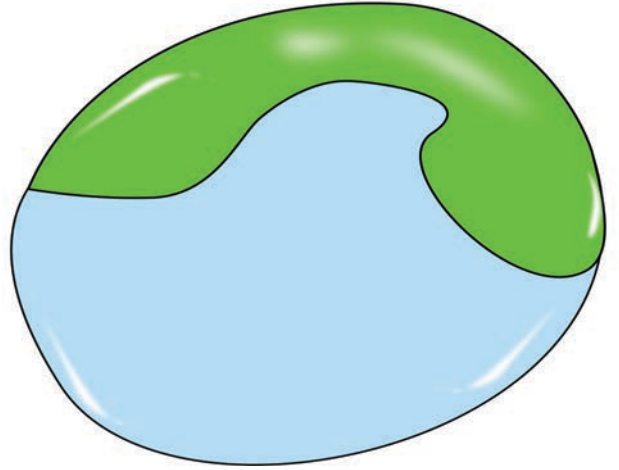
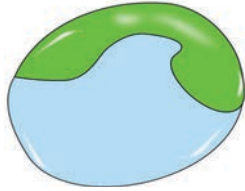
© Simple Living. Creative Learning

A swamp is a low-lying area or wetland that is partially or intermittently covered with water. The water slowly flows through the poorly drained soil.



swamp

A bay is a large body of water that is partly surrounded by land. They empty out to a larger body like an ocean or sea.



bay

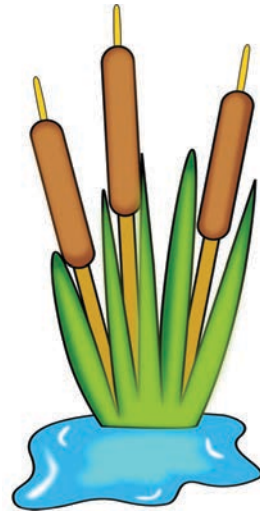
© Simple Living. Creative Learning

A geyser is a spring of hot water that erupts intermittent jets of hot water and steam.



geyser

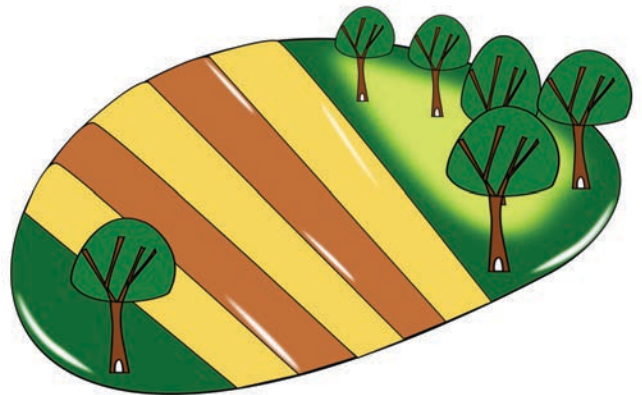
A marsh is a wetland with soil that is rich in minerals. Marshes support mostly grasses and are common in areas called deltas.



marsh

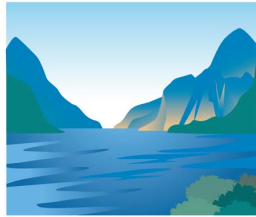
© Simple Living. Creative Learning

A plain is a large, flat sweeping area of land without much change in elevation.



plain

A fjord is a deep, narrow sea between cliffs or steep sloped land.



fjord

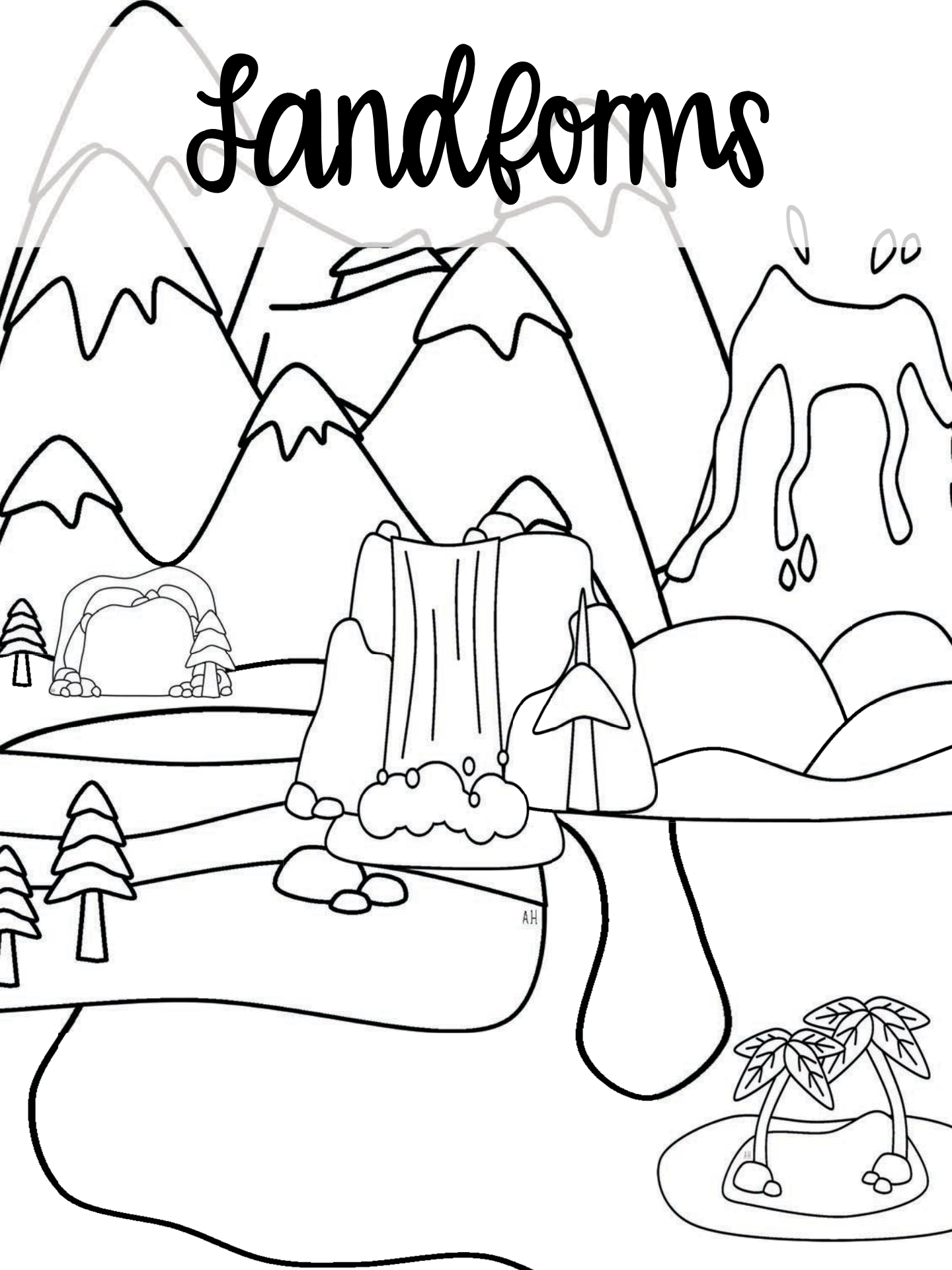
© Simple Living. Creative Learning

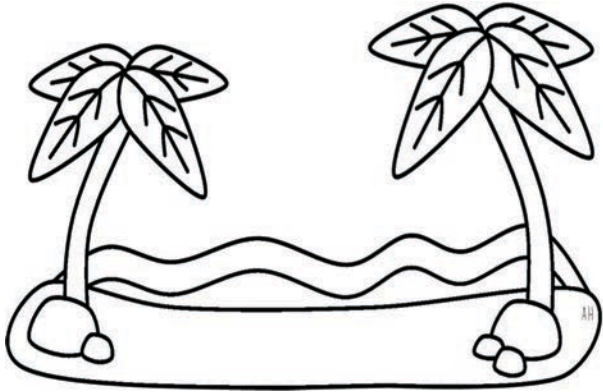
An archipelago is a sea of water with many scattered islands. It can also be known as a group, cluster or collection of islands.



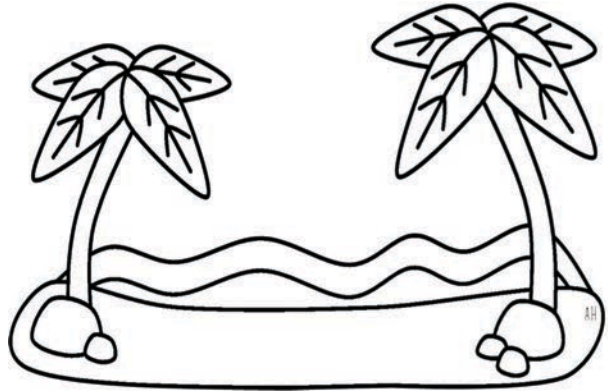
archipelago

Sandforms



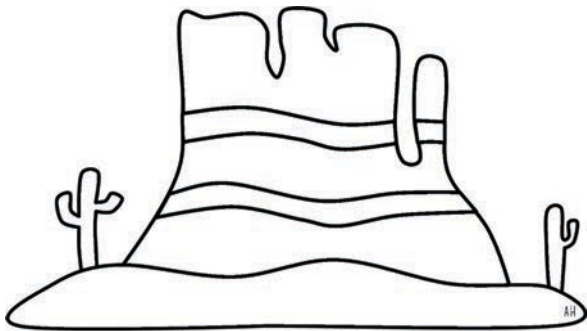


beach

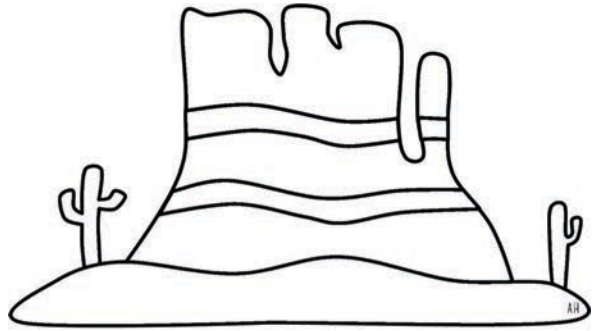


beach

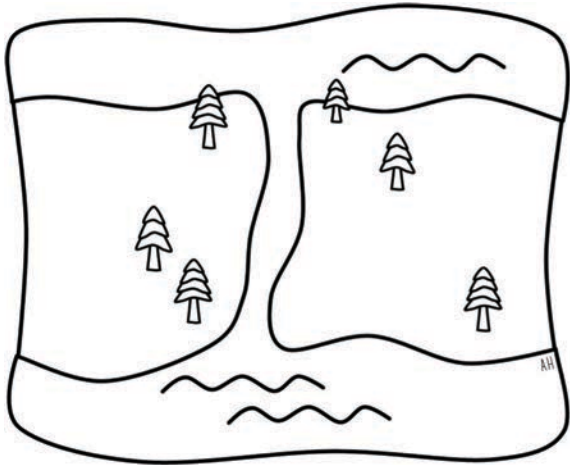
© Simple Living. Creative Learning



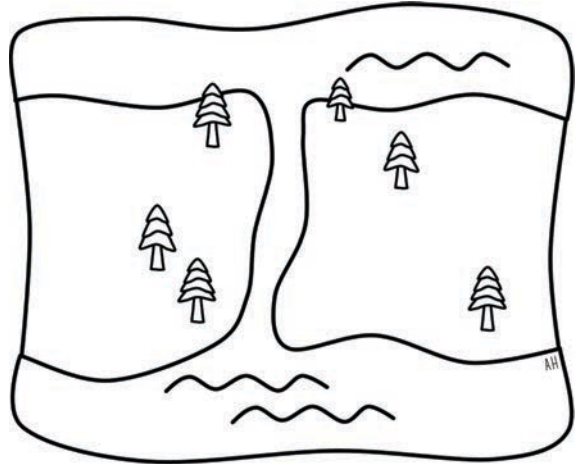
butte



butte

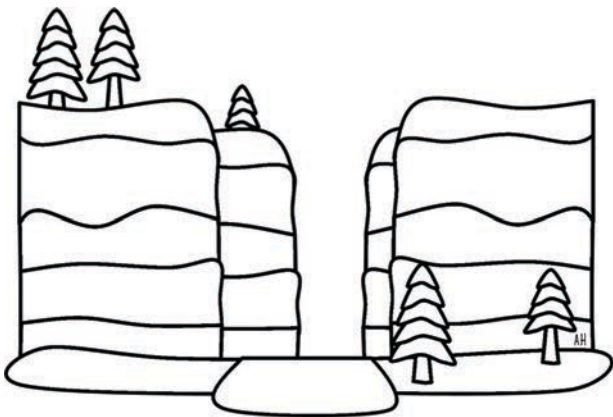


canal

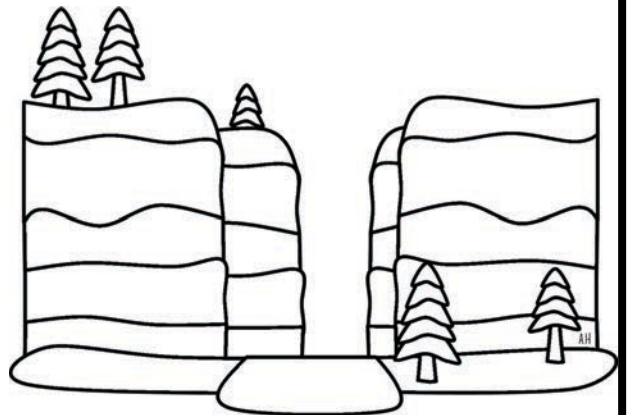


canal

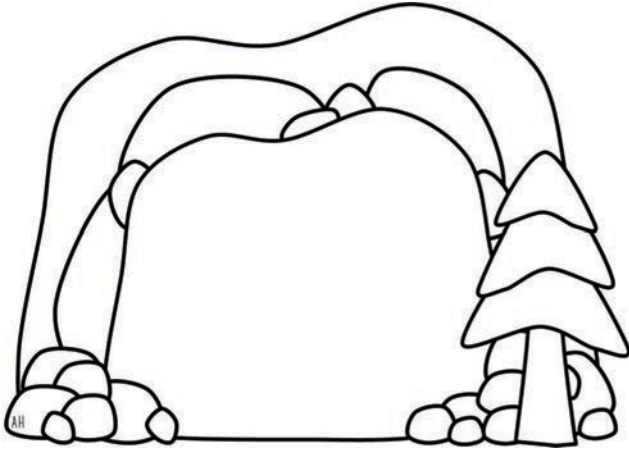
© Simple Living. Creative Learning



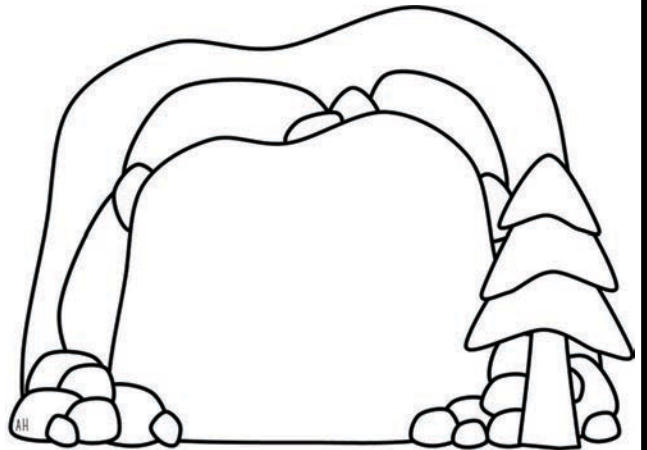
canyon



canyon

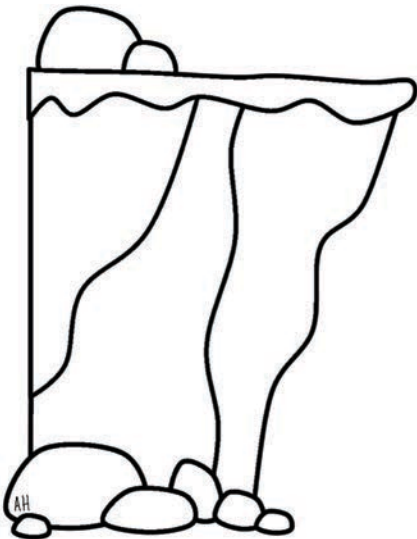


cave

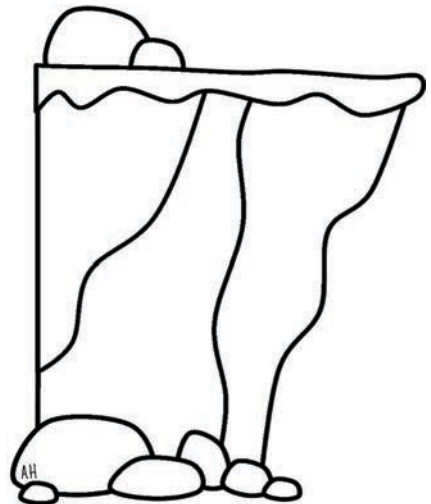


cave

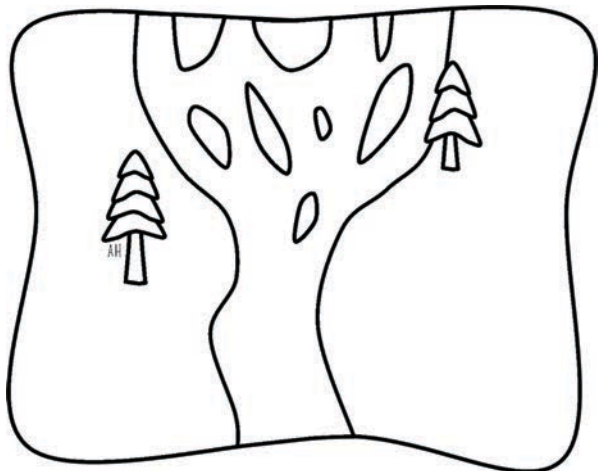
© Simple Living. Creative Learning



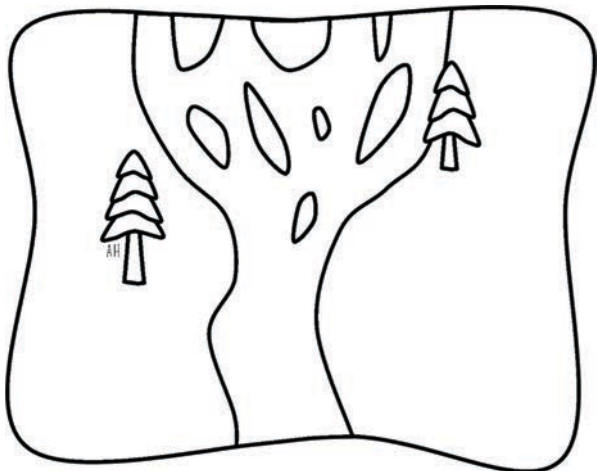
cliff



cliff

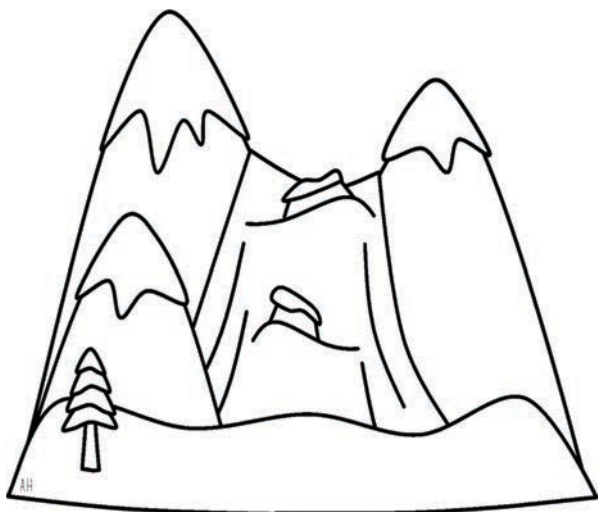


delta

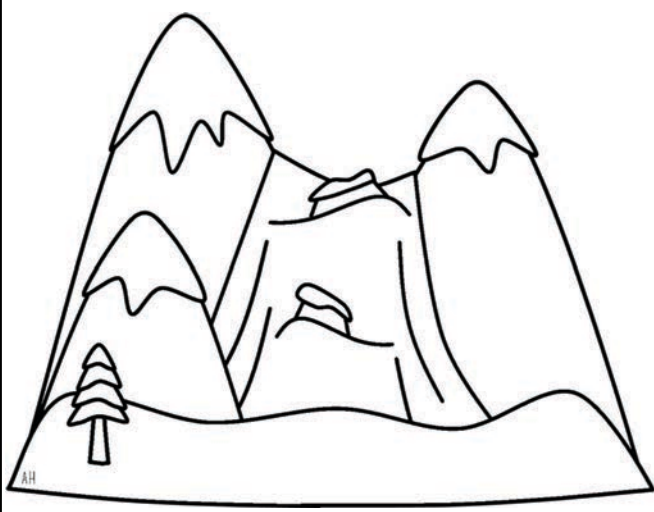


delta

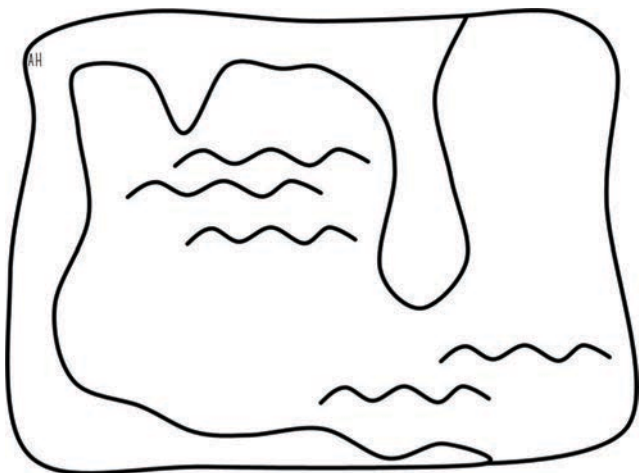
© Simple Living. Creative Learning



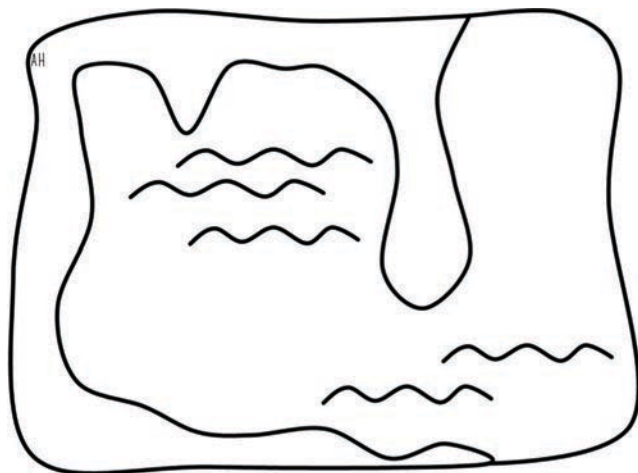
glacier



glacier

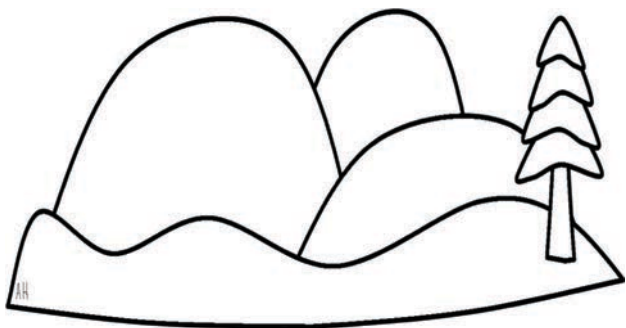


gulf

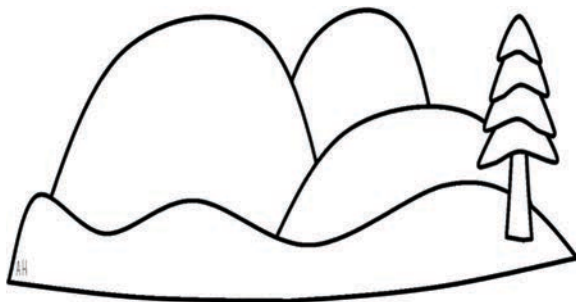


gulf

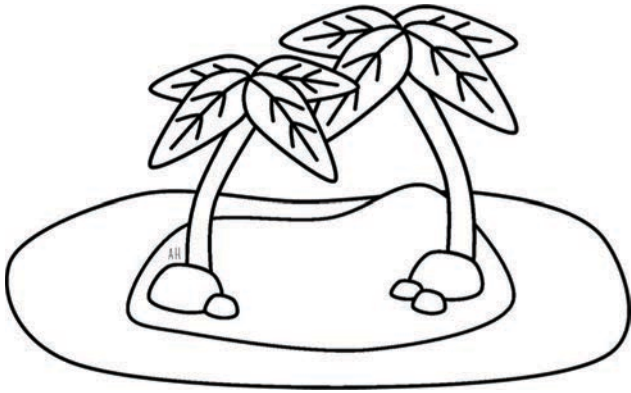
© Simple Living. Creative Learning



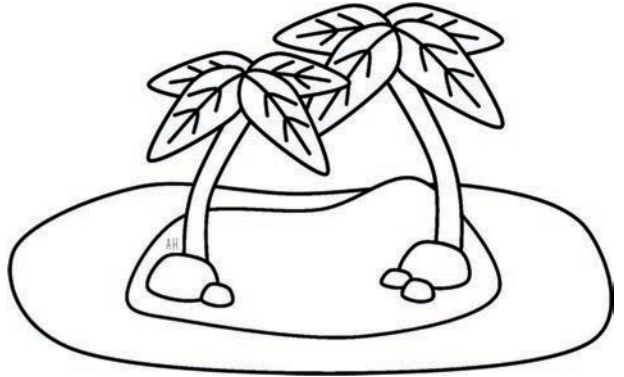
hills



hills

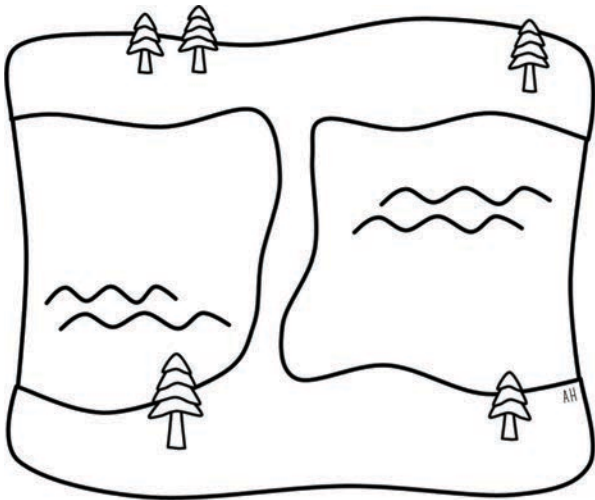


island

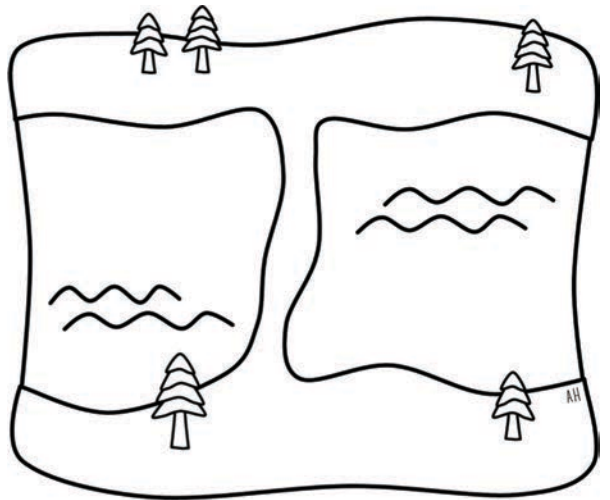


island

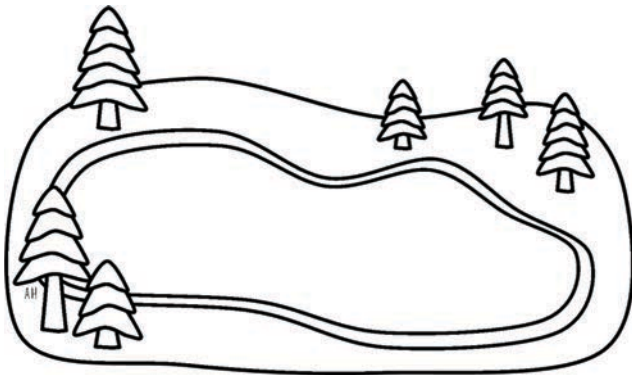
© Simple Living. Creative Learning



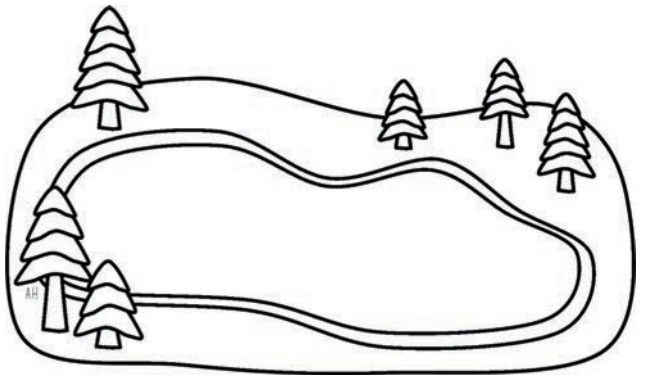
isthmus



isthmus

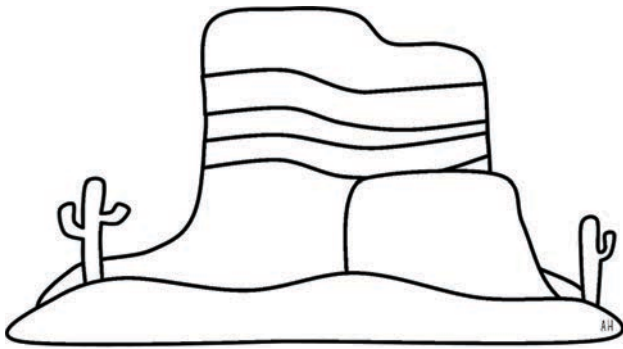


lake

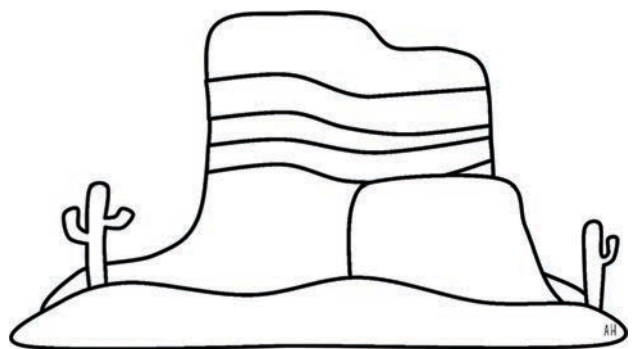


lake

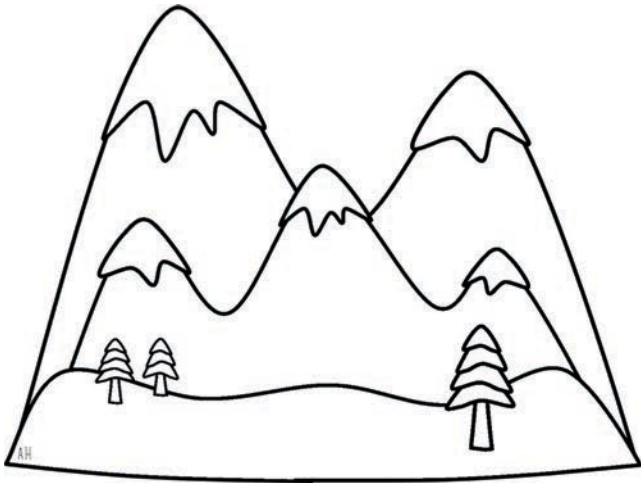
© Simple Living. Creative Learning



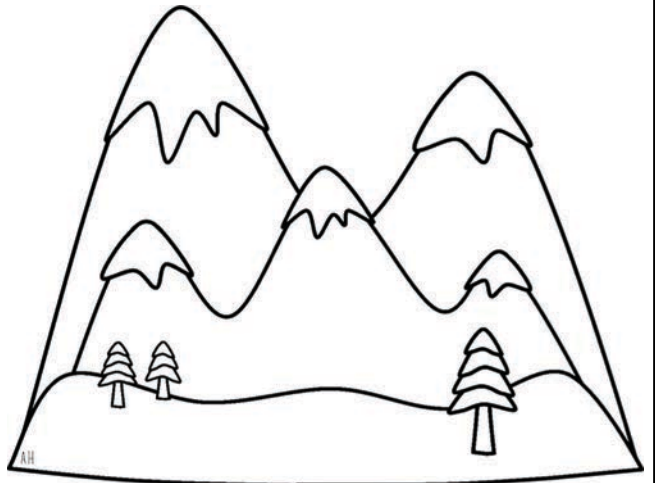
mesa



mesa

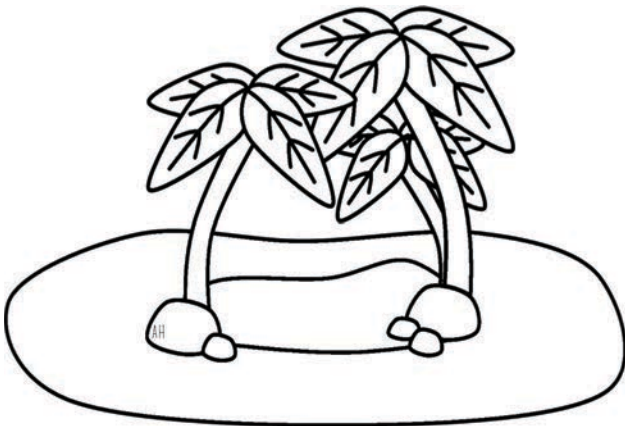


mountains



mountains

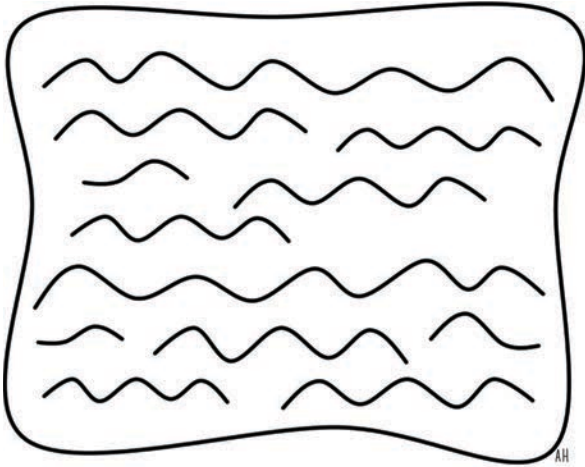
© Simple Living. Creative Learning



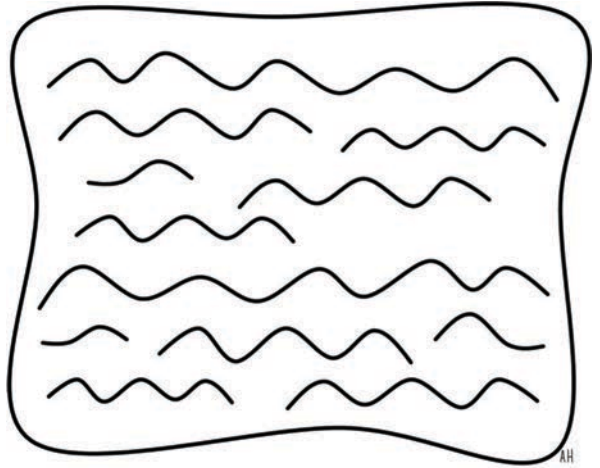
oasis



oasis

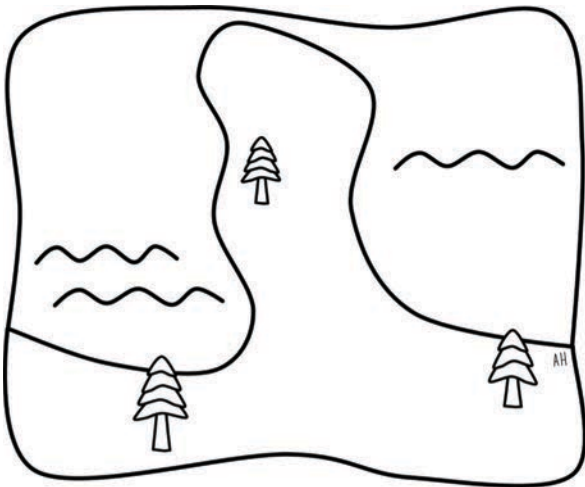


ocean

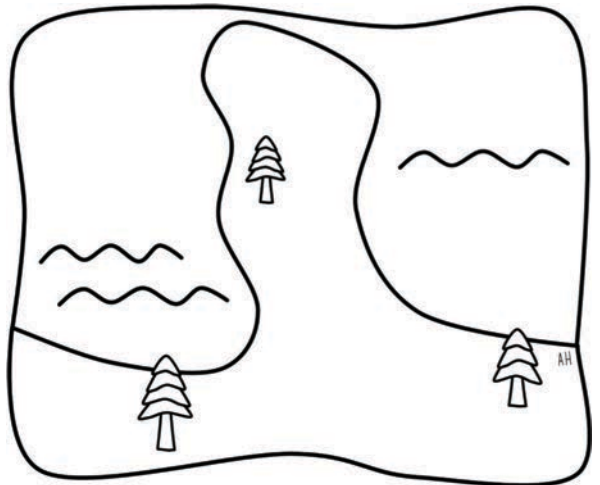


ocean

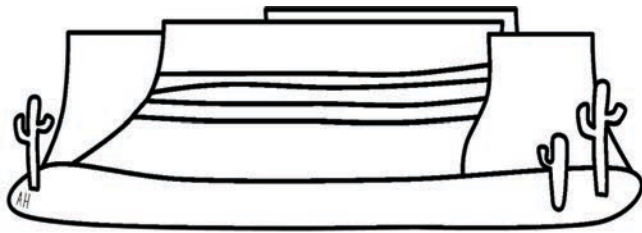
© Simple Living. Creative Learning



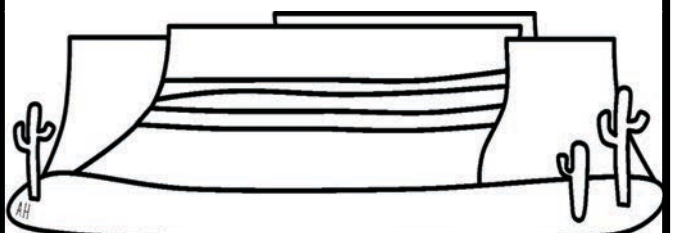
peninsula



peninsula

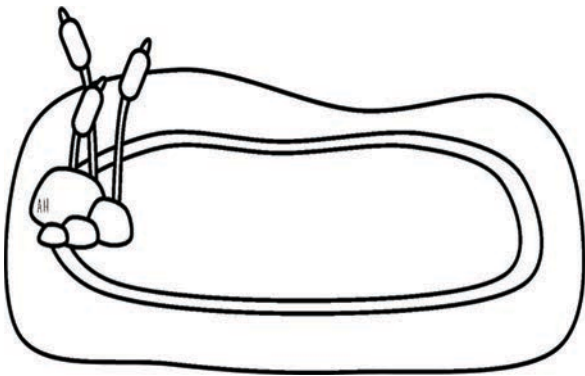


plateau

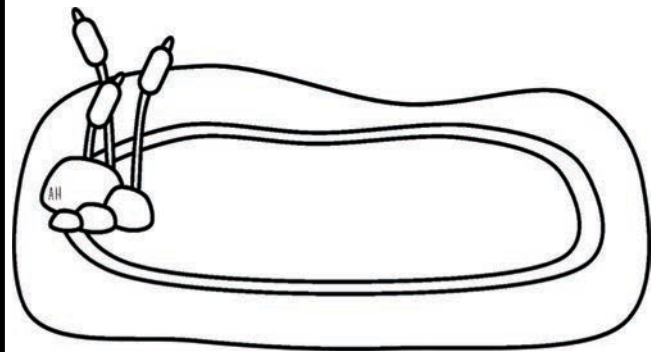


plateau

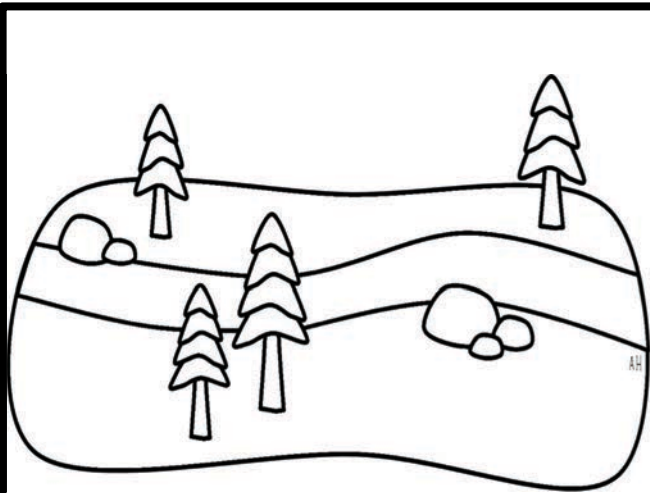
© Simple Living. Creative Learning



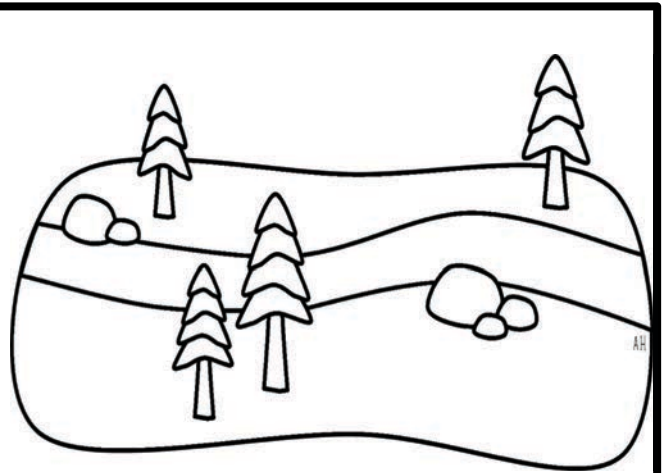
pond



pond

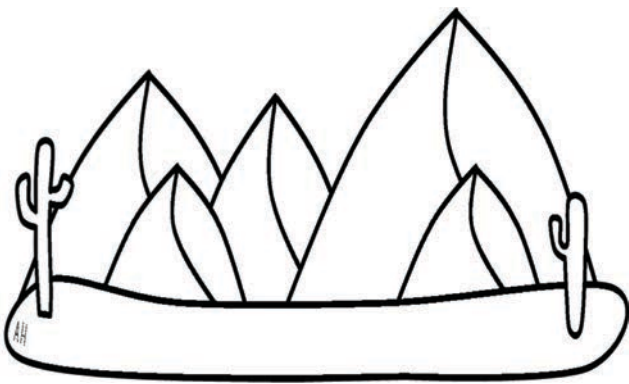


river

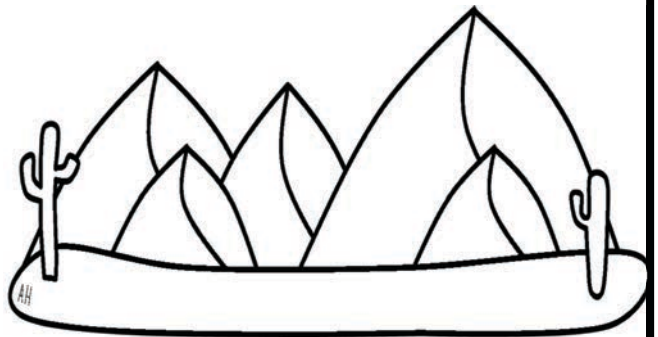


river

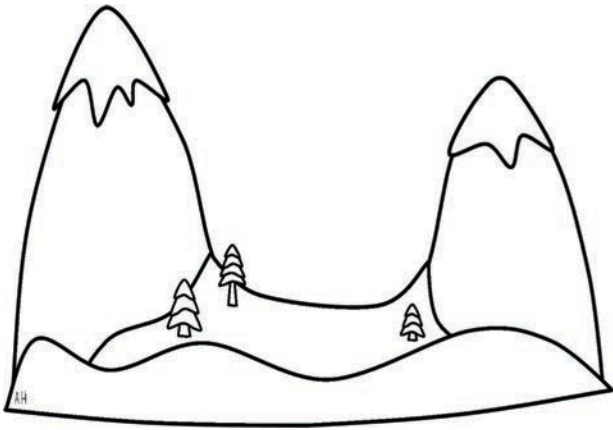
© Simple Living. Creative Learning



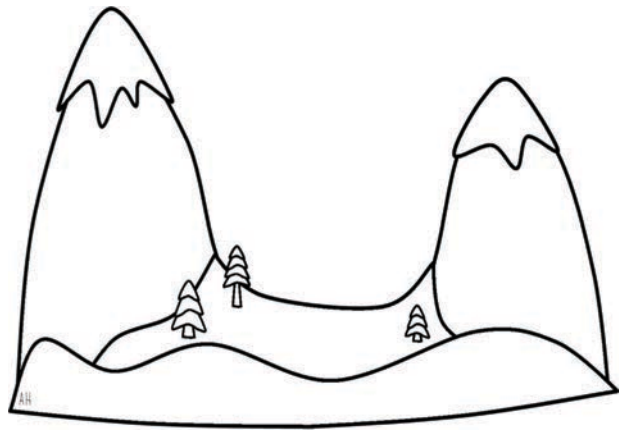
sand dunes



sand dunes

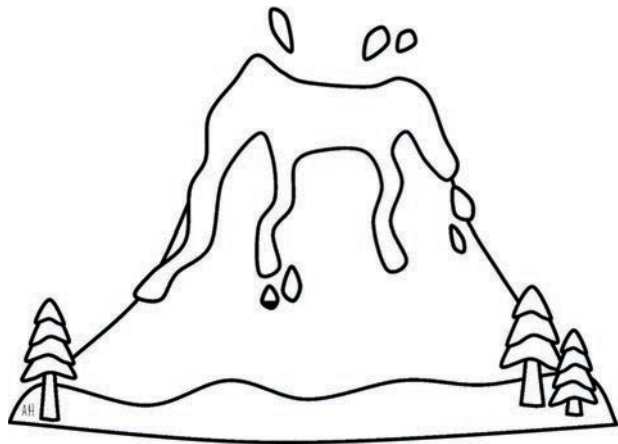


valley

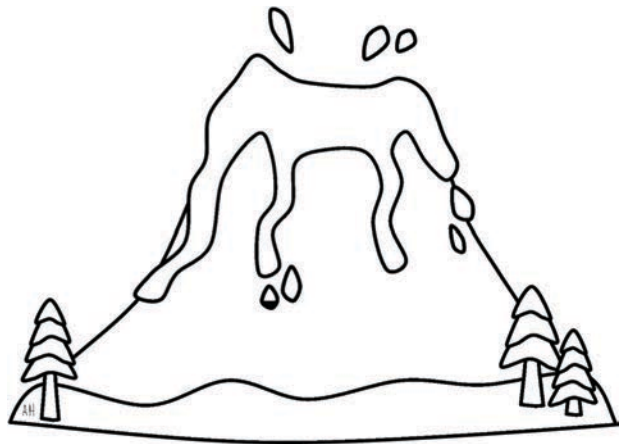


valley

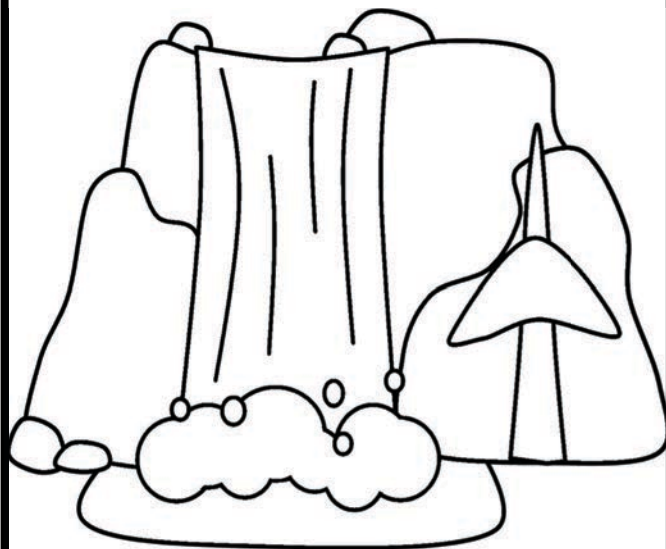
© Simple Living. Creative Learning



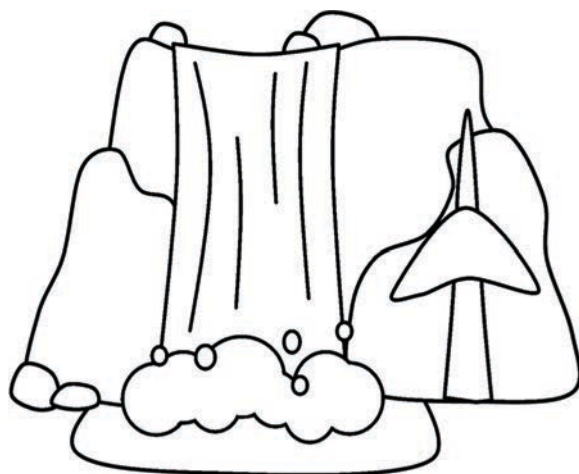
volcano



volcano

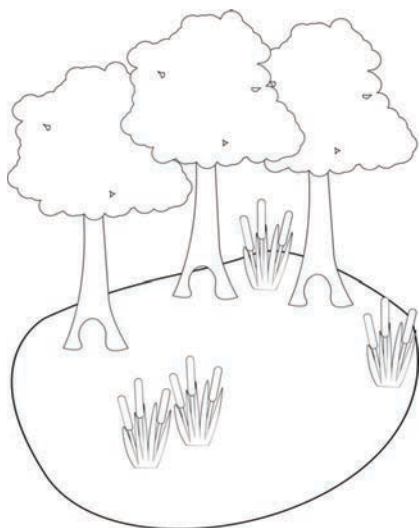


waterfall

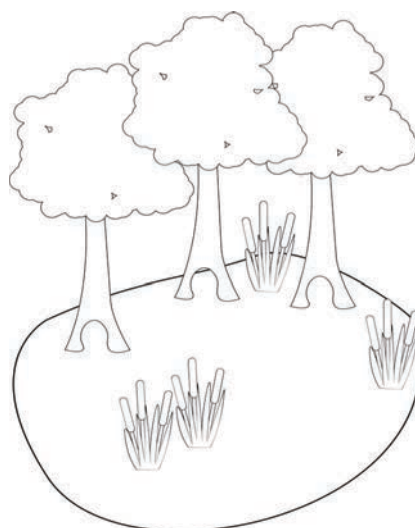


waterfall

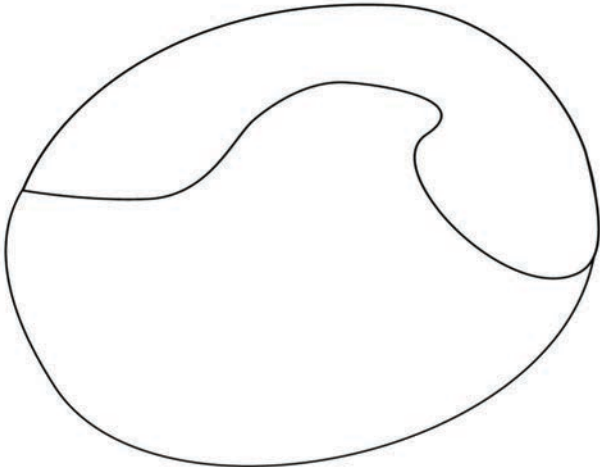
© Simple Living. Creative Learning



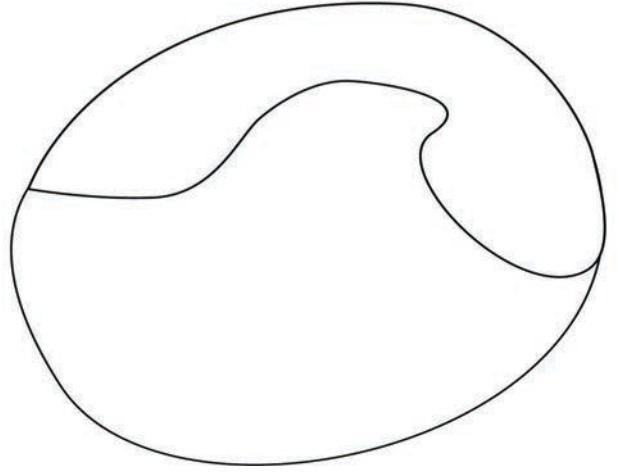
swamp



swamp



bay

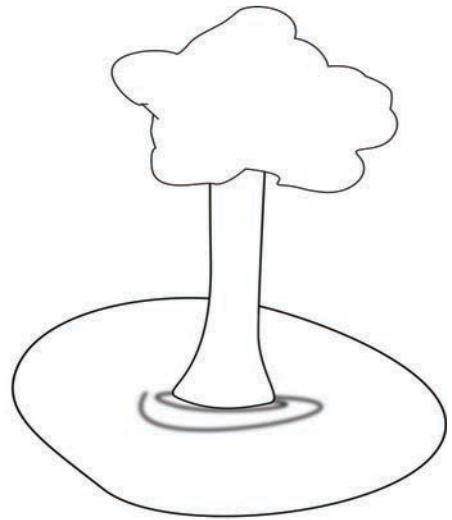


bay

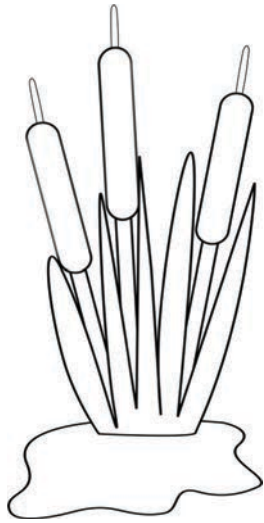
© Simple Living. Creative Learning



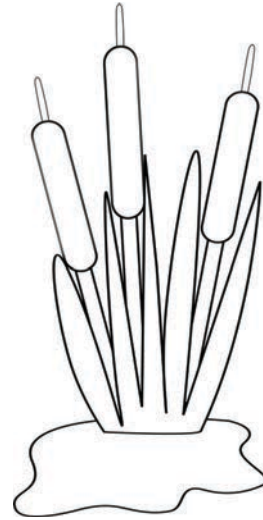
geyser



geyser

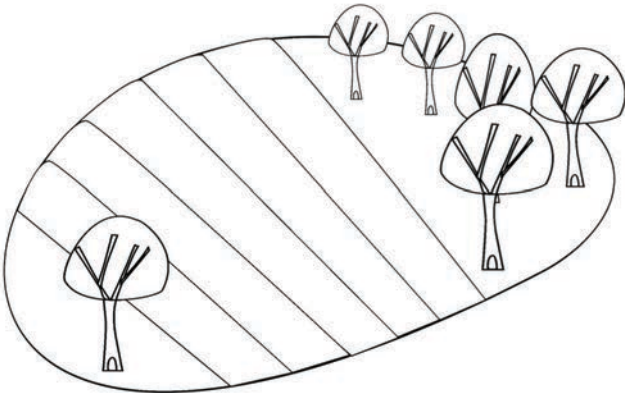


marsh

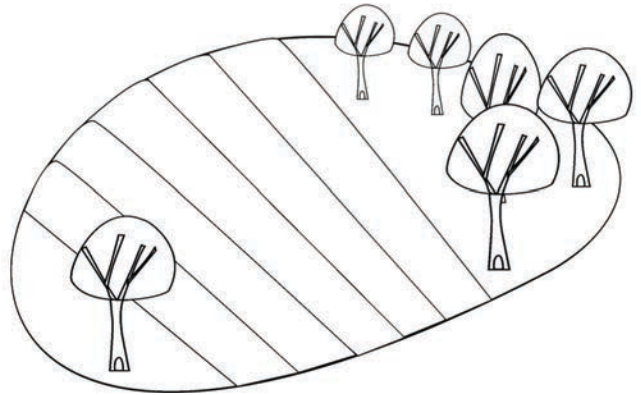


marsh

© Simple Living. Creative Learning



plain



plain

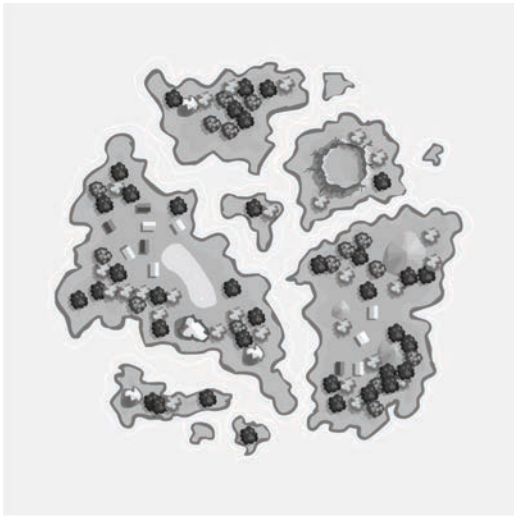


fjord

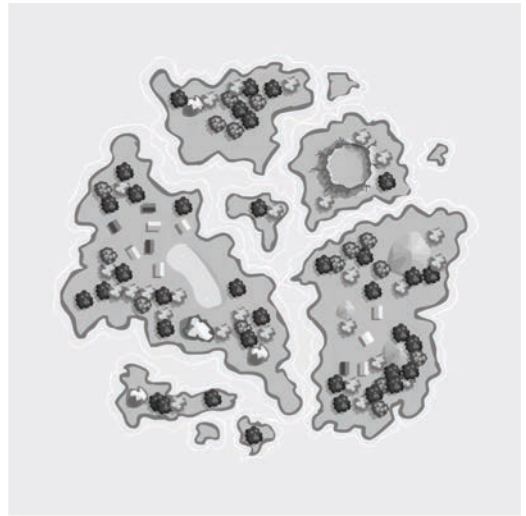


fjord

© Simple Living. Creative Learning

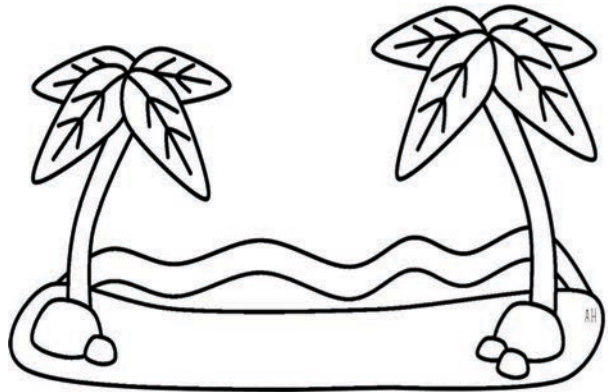
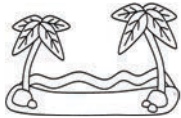


archipelago



archipelago

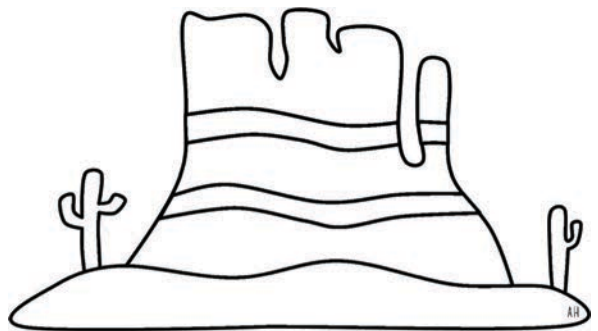
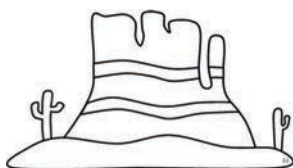
A beach usually consists of loose particles such as sand, gravel or pebbles and are situated along the coast near an ocean, sea, lake or river.



beach

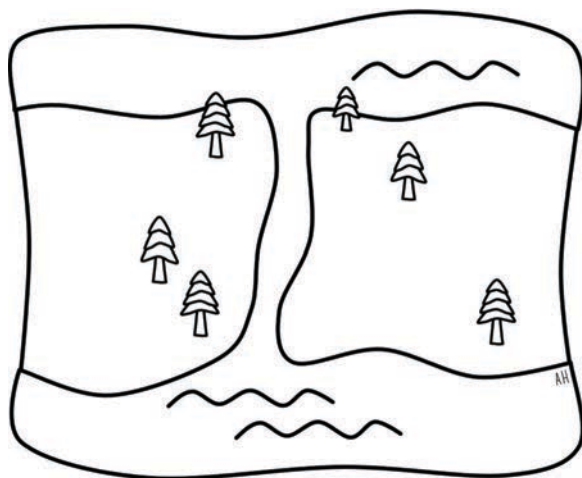
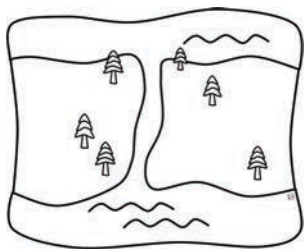
© Simple Living. Creative Learning

A butte is an isolated hill with steep sides and a relatively small, flat top.



butte

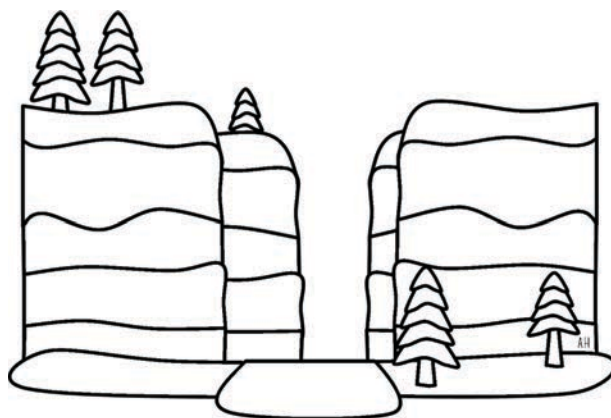
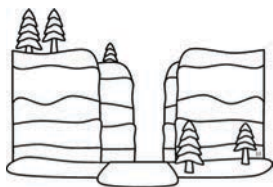
Canals are
channels of
water made by
humans.



canal

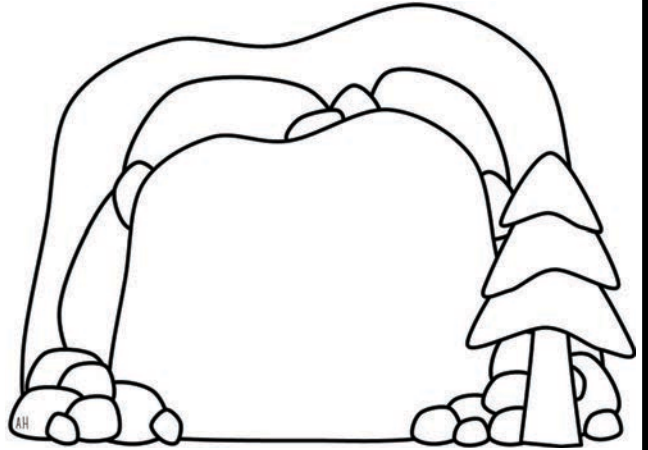
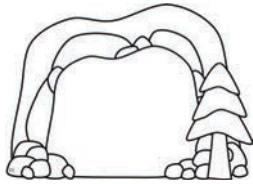
© Simple Living. Creative Learning

A canyon is a
deep, narrow
valley with high,
steep walls.



canyon

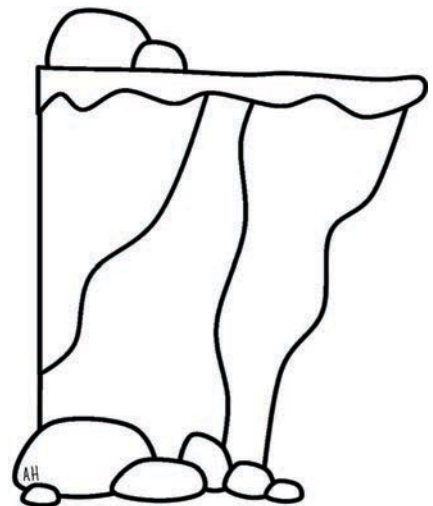
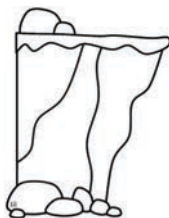
A cave is a hollow place in the ground that is large enough for a human to fit inside.



cave

© Simple Living. Creative Learning

A cliff is a steep, vertical rock face, that are usually found on coasts and in mountainous areas.



cliff

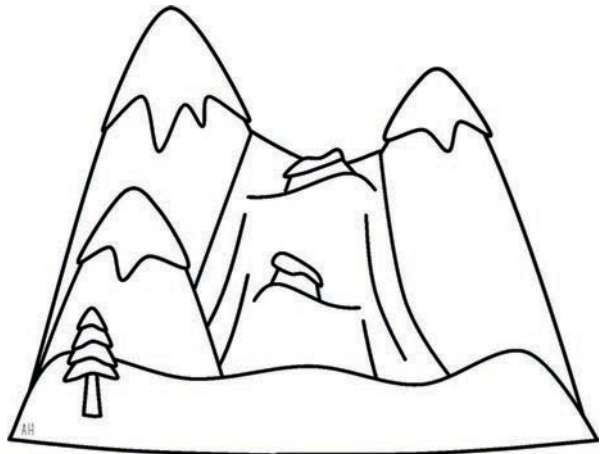
River deltas form at the mouth of a river where it flows into an ocean, sea, lake or reservoir. They form over time from deposits of sediment carried by the river.



delta

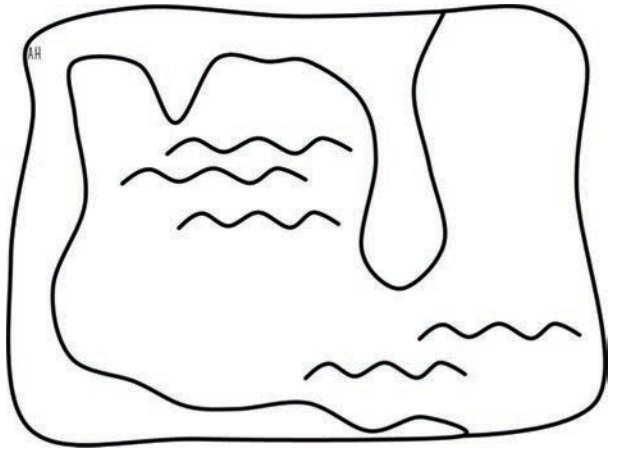
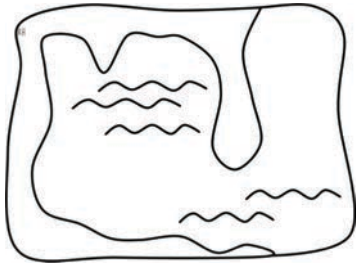
© Simple Living. Creative Learning

A glacier is a large body of ice that moves very slowly across the Earth's surface.



glacier

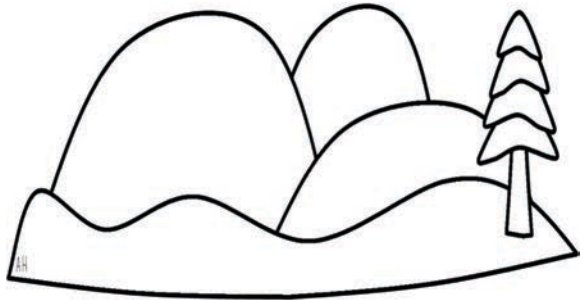
A gulf is a large bay that is partly enclosed by land.



gulf

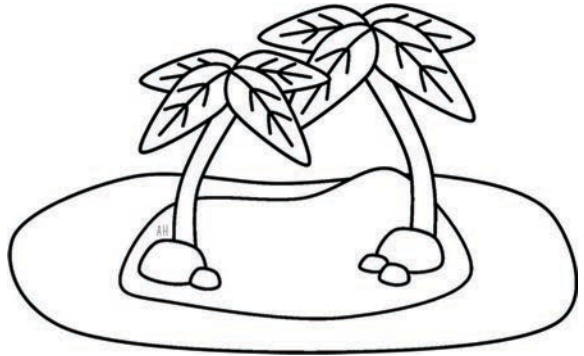
© Simple Living. Creative Learning

Hills are smaller than mountains but higher than their surrounding areas.



hills

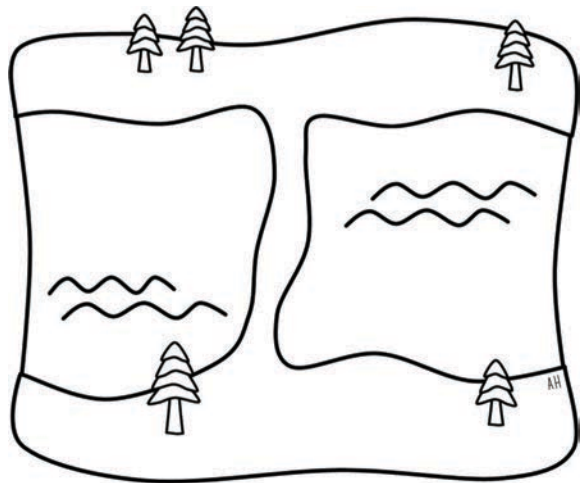
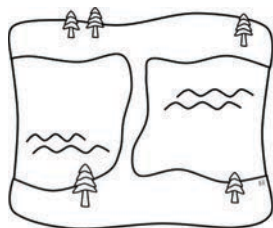
An island is a small piece of land with water all around it.



island

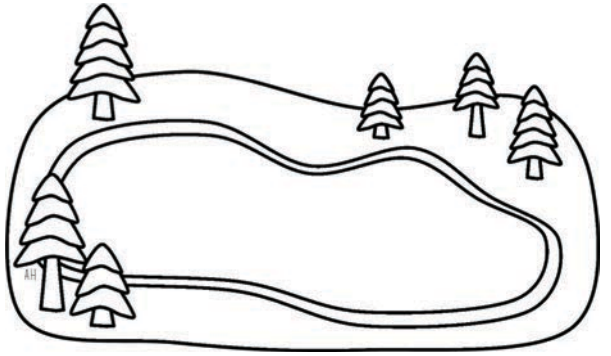
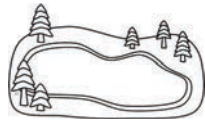
© Simple Living. Creative Learning

An isthmus is a narrow stretch of land which joins two large land masses.



isthmus

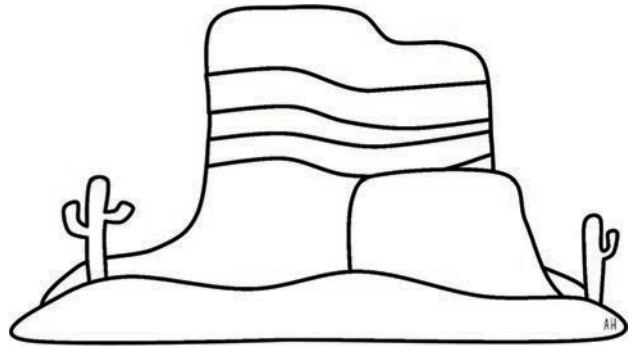
A lake is a large body of water that is surrounded by land.



lake

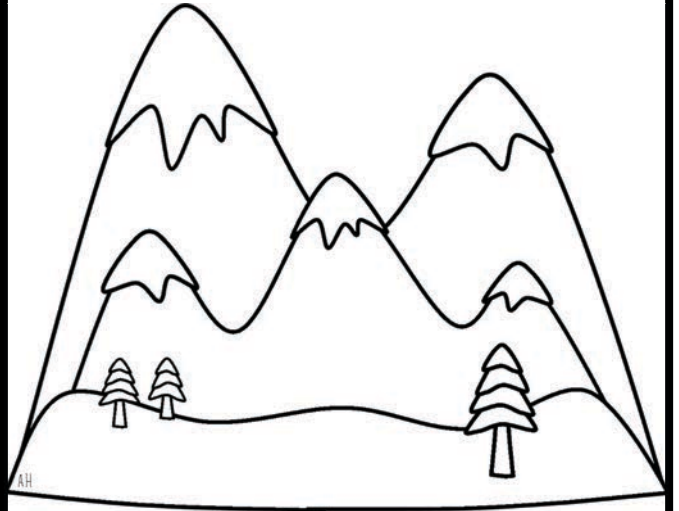
© Simple Living. Creative Learning

A mesa is an elevated area of land with a flat top and steep sides.



mesa

Mountains are tall pieces of land with steep sides and a pointed tip called a peak.



mountains

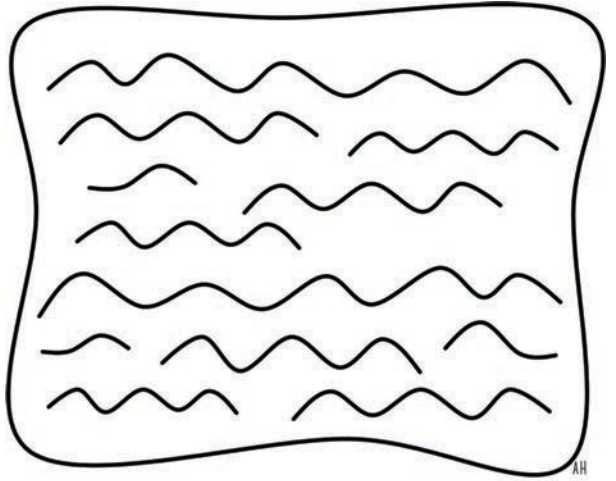
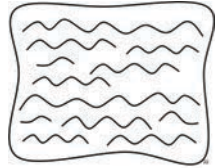
© Simple Living. Creative Learning

An oasis is a place in the desert where a pool of water is found surrounded by trees.



oasis

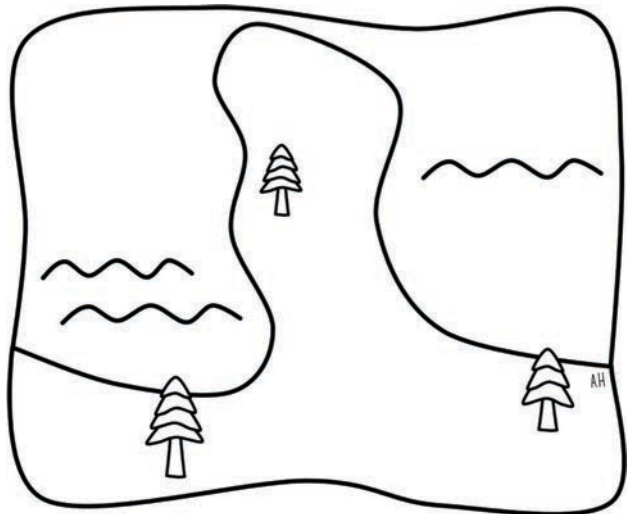
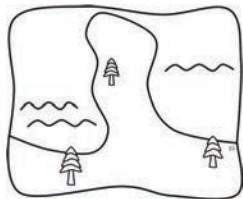
An ocean is a very large body of salt water that surrounds a continent.



ocean

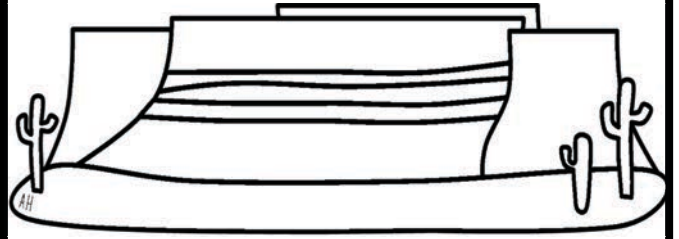
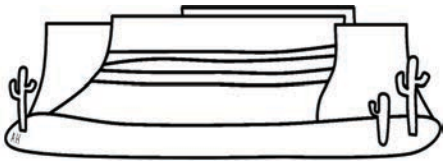
© Simple Living. Creative Learning

A peninsula is a piece of land that is surrounded by water on three sides.



peninsula

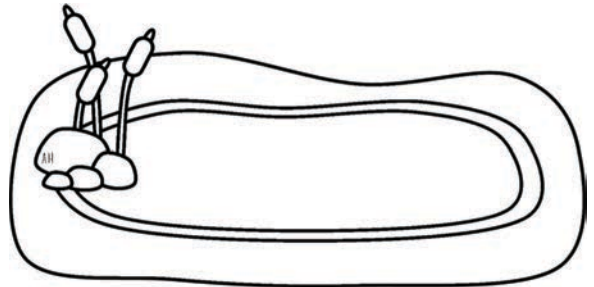
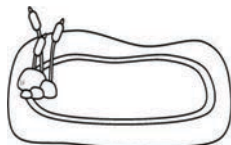
A plateau is a flat topped highland with steep sides.



plateau

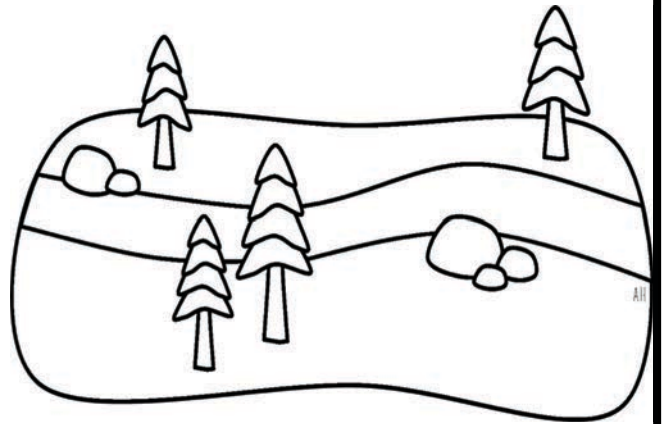
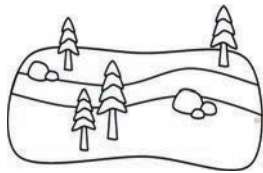
© Simple Living. Creative Learning

A pond is a small body of water (smaller than a lake) surrounded by land on all sides.



pond

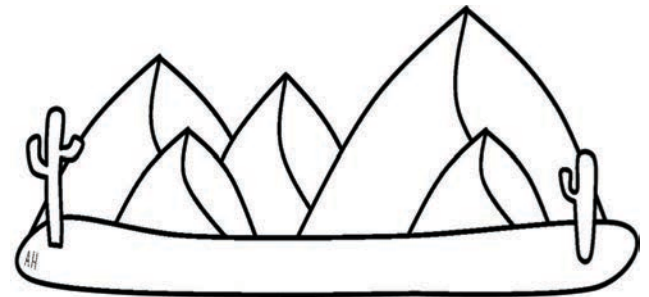
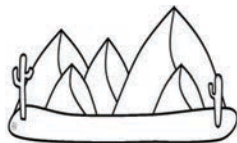
A river is a large, flowing body of fresh water. It usually empties into the ocean.



river

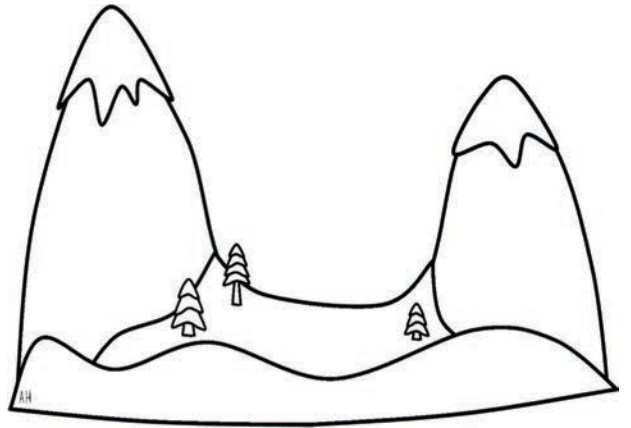
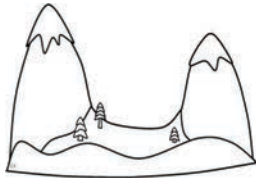
© Simple Living. Creative Learning

Sand dunes are huge hills of sand formed by winds.



sand dunes

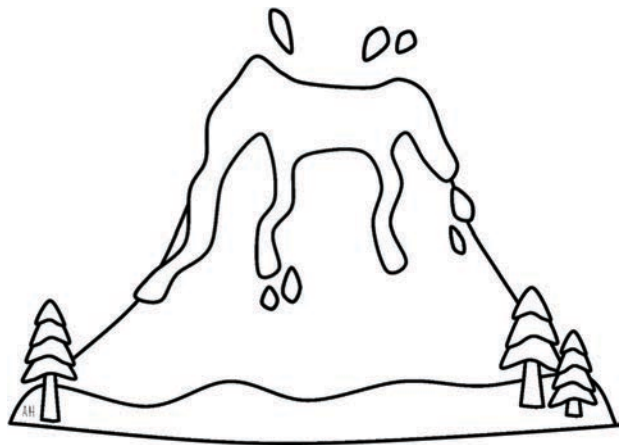
A valley is an area of low land between two mountains or hills.



valley

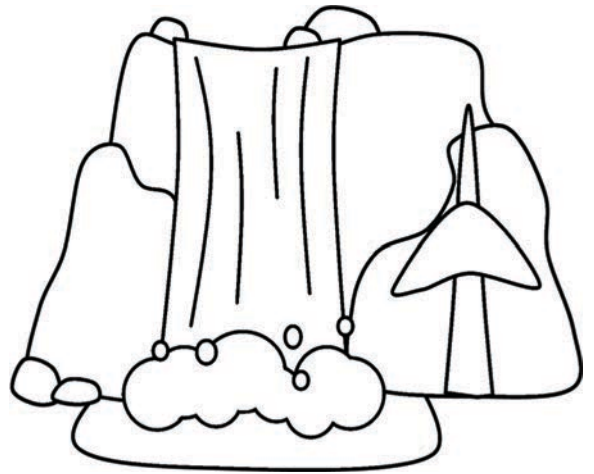
© Simple Living. Creative Learning

A volcano is a mountain that has formed when lava rises through the Earth's crust.



volcano

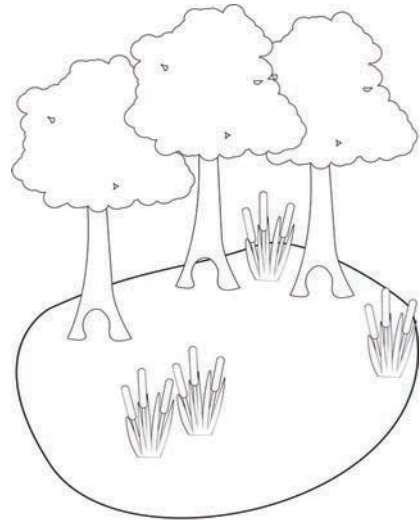
A waterfall is a place where a river or stream flows over a steep cliff.



waterfall

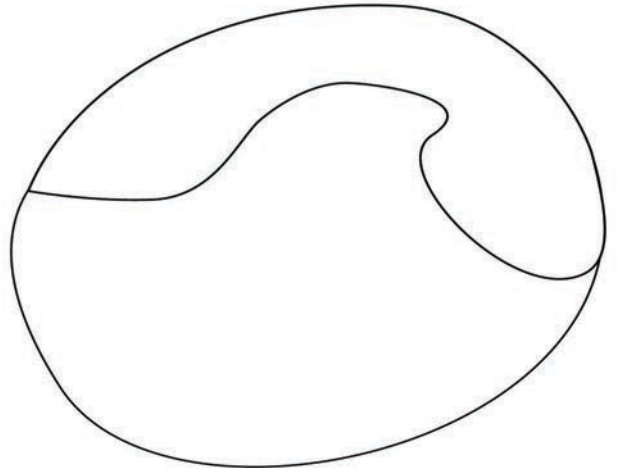
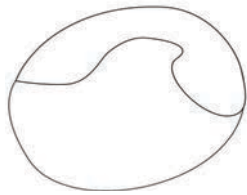
© Simple Living. Creative Learning

A swamp is a low-lying area or wetland that is partially or intermittently covered with water. The water slowly flows through the poorly drained soil.



swamp

A bay is a large body of water that is partly surrounded by land. They empty out to a larger body like an ocean or sea.



bay

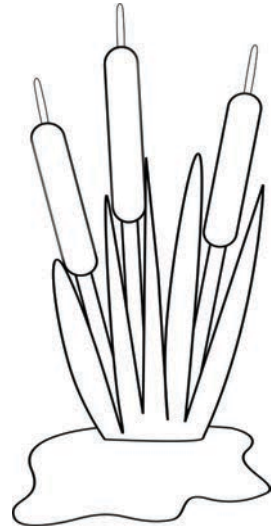
© Simple Living. Creative Learning

A geyser is a spring of hot water that erupts intermittent jets of hot water and steam.



geyser

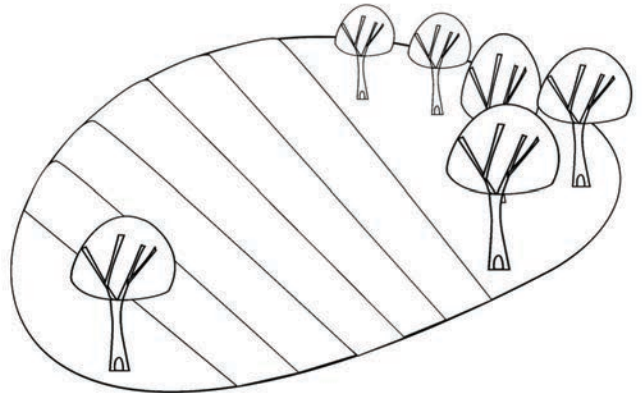
A marsh is a wetland with soil that is rich in minerals. Marshes support mostly grasses and are common in areas called deltas.



marsh

© Simple Living. Creative Learning

A plain is a large, flat sweeping area of land without much change in elevation.



plain

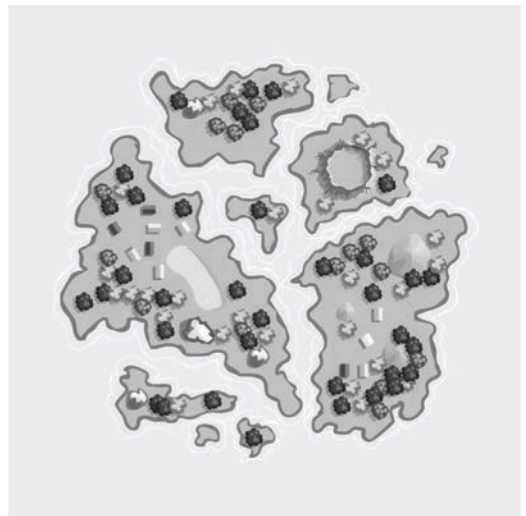
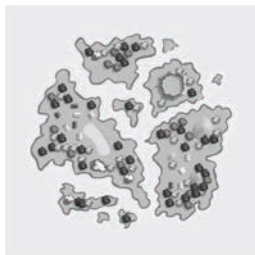
A fjord is a deep, narrow sea between cliffs or steep sloped land.



fjord

© Simple Living. Creative Learning

An archipelago is a sea of water with many scattered islands. It can also be known as a group, cluster or collection of islands.



archipelago

Landforms





beach



beach

© Simple Living. Creative Learning



butte



butte



canal



canal

© Simple Living. Creative Learning



canyon



canyon



cave



cave

© Simple Living. Creative Learning



cliff



cliff



delta



delta

© Simple Living. Creative Learning



glacier



glacier



gulf



gulf

© Simple Living. Creative Learning



hills



hills



island



island

© Simple Living. Creative Learning



isthmus



isthmus



lake



lake

© Simple Living. Creative Learning



mesa



mesa



mountains



mountains

© Simple Living. Creative Learning



oasis



oasis



ocean



ocean

© Simple Living. Creative Learning



peninsula



peninsula



plateau



plateau

© Simple Living. Creative Learning



pond



pond



river



river

© Simple Living. Creative Learning



sand dunes



sand dunes



valley



valley

© Simple Living. Creative Learning



volcano



volcano



waterfall



waterfall

© Simple Living. Creative Learning



swamp



swamp



bay



bay

© Simple Living. Creative Learning



geyser



geyser

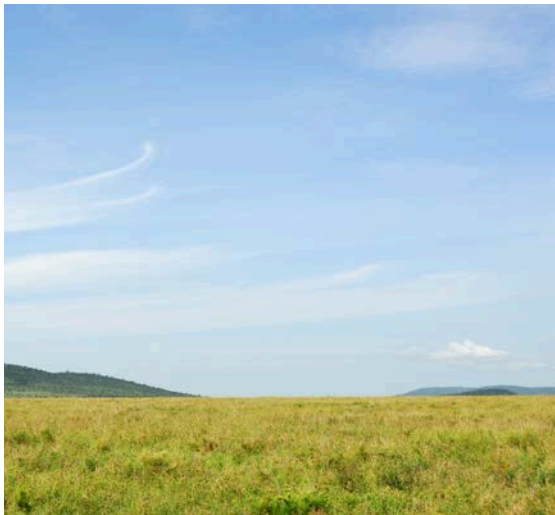


marsh

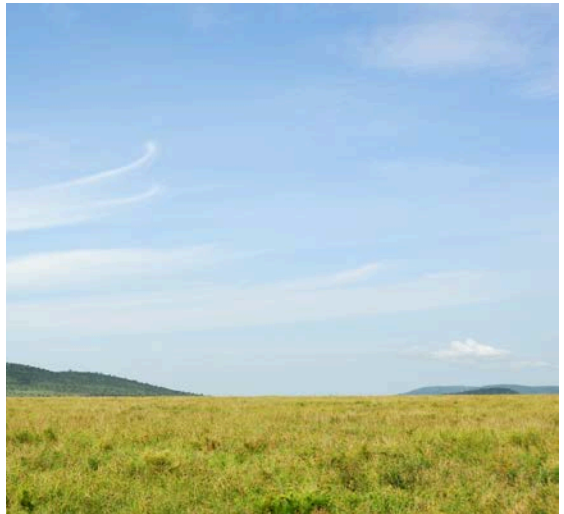


marsh

© Simple Living. Creative Learning



plain



plain

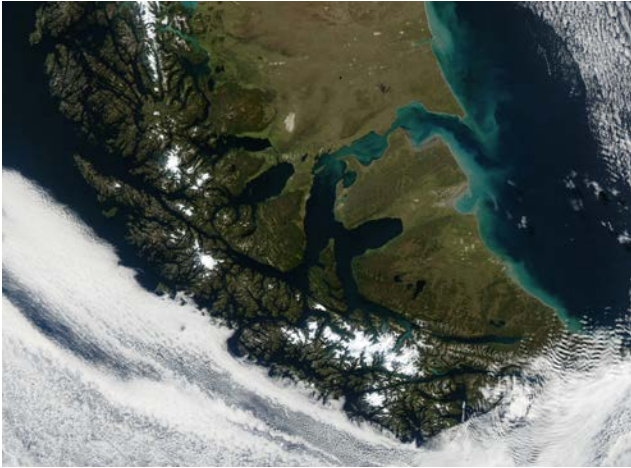


fjord

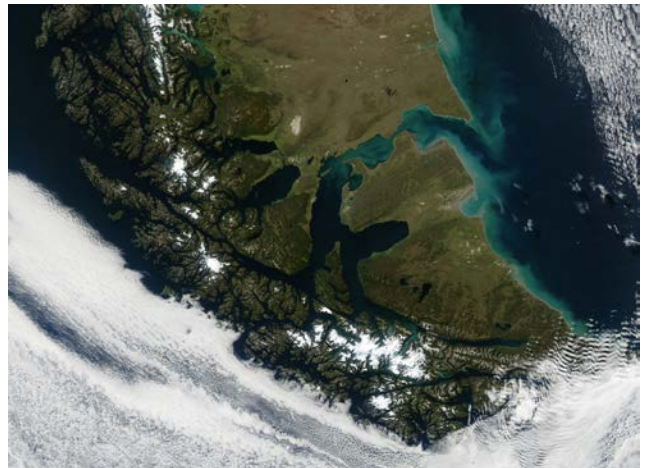


fjord

© Simple Living. Creative Learning



archipelago



archipelago

A beach usually consists of loose particles such as sand, gravel or pebbles and are situated along the coast near an ocean, sea, lake or river.



beach

© Simple Living. Creative Learning

A butte is an isolated hill with steep sides and a relatively small, flat top.



butte

Canals are channels of water made by humans.



canal

© Simple Living. Creative Learning

A canyon is a deep, narrow valley with high, steep walls.



canyon

A cave is a hollow
lace in the ground
that is large
enough for a
human to fit inside.



cave

© Simple Living. Creative Learning

A cliff is a steep,
vertical rock face,
that are usually
found on coasts
and in mountainous
areas.



cliff

River deltas form at the mouth of a river where it flows into an ocean, sea, lake or reservoir. They form over time from deposits of sediment carried by the river.



delta

© Simple Living. Creative Learning

A glacier is a large body of ice that moves very slowly across the Earth's surface.



glacier

A gulf is a large bay that is partly enclosed by land.



gulf

© Simple Living. Creative Learning

Hills are smaller than mountains but higher than their surrounding areas.



hills

An island is a small piece of land with water all around it.



island

© Simple Living. Creative Learning

An isthmus is a narrow stretch of land which joins two large land masses.



isthmus

A lake is a large body of water that is surrounded by land.



lake

© Simple Living. Creative Learning

A mesa is an elevated area of land with a flat top and steep sides.



mesa

Mountains are tall pieces of land with steep sides and a pointed tip called a peak.



mountains

© Simple Living. Creative Learning

An oasis is a place in the desert where a pool of water is found surrounded by trees.



oasis

An ocean is a very large body of salt water that surrounds a continent.



ocean

© Simple Living. Creative Learning

A peninsula is a piece of land that is surrounded by water on three sides.



peninsula

A plateau is a flat topped highland with steep sides.



plateau

© Simple Living. Creative Learning

A small body of water (smaller than a lake) surrounded by land on all sides.



pond

A river is a large, flowing body of fresh water. It usually empties into the ocean.



river

© Simple Living. Creative Learning

Sand dunes are huge hills of sand formed by winds.



sand dunes

A valley is an area of low land between two mountains or hills.



valley

© Simple Living. Creative Learning

A volcano is a mountain that has formed when lava rises through the Earth's crust.



volcano

A waterfall is a place where a river or stream flows over a steep cliff.



waterfall

© Simple Living. Creative Learning

A swamp is a low-lying area or wetland that is partially or intermittently covered with water. The water slowly flows through the poorly drained soil.



swamp

A bay is a large body of water that is partly surrounded by land. They empty out to a larger body like an ocean or sea.



bay

© Simple Living. Creative Learning

A geyser is a spring of hot water that erupts intermittent jets of hot water and steam.



geyser

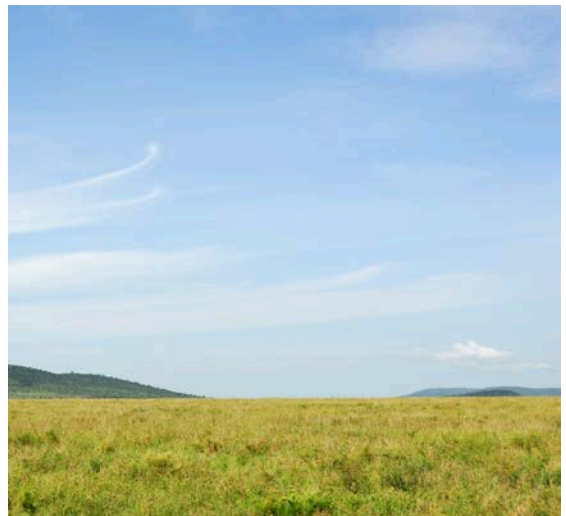
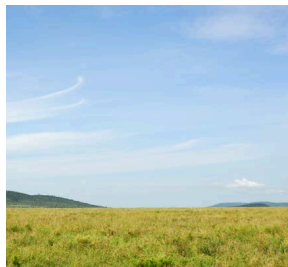
A marsh is a wetland with soil that is rich in minerals. Marshes support mostly grasses and are common in areas called deltas.



marsh

© Simple Living. Creative Learning

A plain is a large, flat sweeping area of land without much change in elevation.



plain

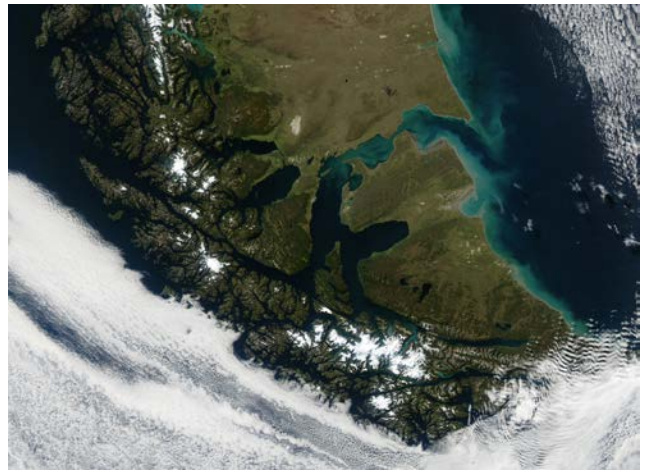
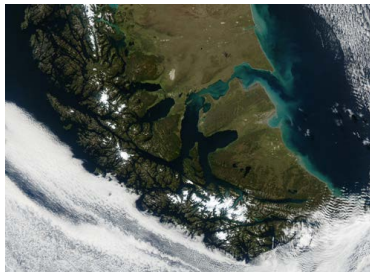
A fjord is a deep, narrow sea between cliffs or steep sloped land.



fjord

© Simple Living. Creative Learning

An archipelago is a sea of water with many scattered islands. It can also be known as a group, cluster or collection of islands.



archipelago